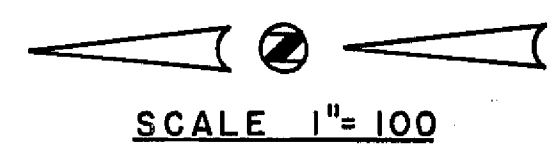


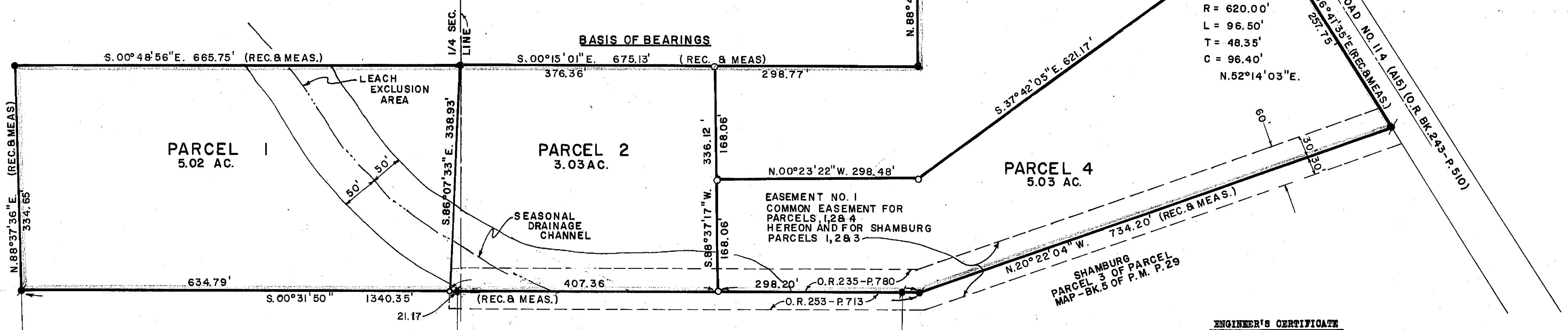
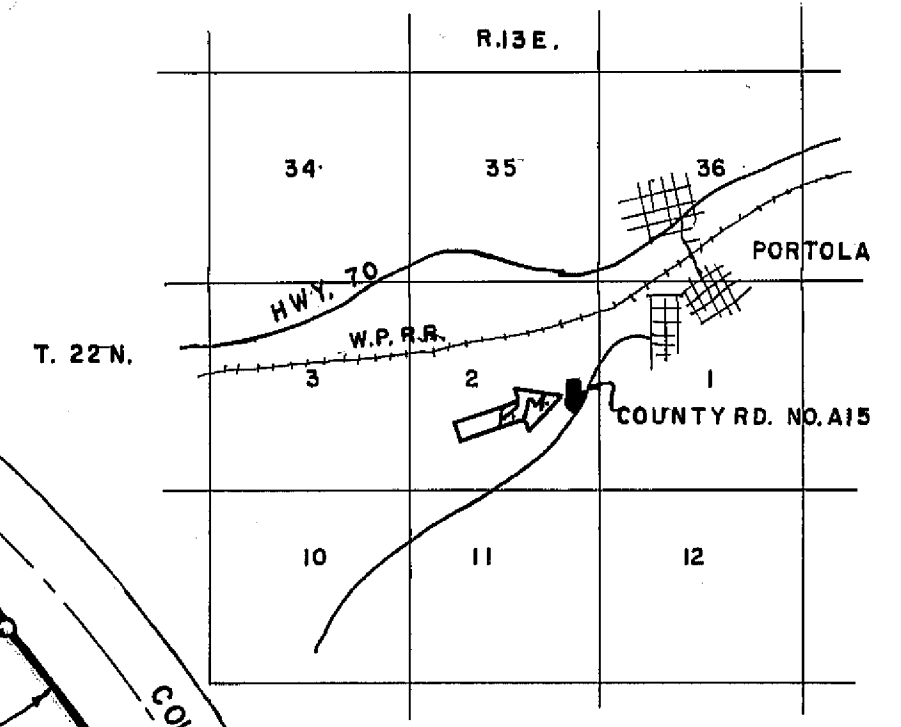
LEGEND

- Found 1/2" iron pipe and tag R.C.E. 13528
- Found 1/2" steel pin with plastic cap, R.C.E.11173
- Set 1/2" steel pin with plastic cap stamped R.C.E. 11173
- Rec. Record (from deed, record map, etc.)
- Meas. Measured
- P.M. Parcel Map
- R/S Record of Survey
- O.R. Official Records, records of County of Plumas
- Bk. Book
- p. Page
- Ac. Acre
- R.C.E. Registered Civil Engineer



NOTES

1. Tentative Parcel Map approved by Plumas County Zoning Administrator May 6, 1976.
2. EASEMENT NO. 1 - a declaration of easement will be recorded concurrently with the filing of this map, declaring the common, non-exclusive 60-ft. easement to be for roadway, utilities and incidental purposes for the benefit of Parcels 1, 2 and 4 hereon.
3. Distances shown are ground distances. All bearings are grid bearings, California Coordinate System, Zone 1. Multiply ground distances by 0.9998137 to obtain grid distances.
4. The control scheme for the coordinate system has been derived from R/S Bk. 3, p. 61 (See also R/S Bk 4, p. 86).



COUNTY TAX COLLECTOR'S CERTIFICATE

I, Tax Collector of the County of Plumas, State of California, do hereby certify that there are no tax liens against the Parcels as shown hereon for unpaid county, municipal, or local taxes or special assessments collected as taxes, except taxes or assessments not yet payable. Taxes or assessments which are a lien but not yet payable are estimated to be in the amount of \$460.⁰⁰

Douglas S. Redstreake
 Douglas S. Redstreake
 Plumas County Tax Collector

BEING ALL OF PARCEL 4 OF PARCEL MAP BK.5 OF PARCEL MAPS PAGE 29.(SEE ALSO P.M. BK.5.P.13 AND R/S BK.4.,P.86)

NOTE (OWNER'S CERTIFICATE)

Prior to the filing of this map a letter, signed by the owners of the lands shown hereon, was filed with the County Engineer certifying that the signers are the owners of the lands shown on said map and that they consent to the preparation and filing of this map and that they are the only persons whose consent is required to pass title to said lands

ENGINEER'S CERTIFICATE

This map was prepared by me or under my direction and is based upon a field survey in conformance with the requirements of the Subdivision Map Act at the request of Alan Paul Warner on June 3, 1976. I hereby certify that it conforms to the approved tentative map and the conditions of approval thereof.

John C. Simpson
 John C. Simpson
 R.C.E. 11173



COUNTY ENGINEER'S CERTIFICATE

This map conforms with the requirements of the Subdivision Map Act and local ordinance.

Dated: 6-15-76

Larry A. Fites
 Larry A. Fites, R.C.E. 13225
 Plumas County Engineer

RECORDER'S CERTIFICATE

Filed this 15th day of June, 1976, at 1:40 P.M. in Book 5 of Parcel Maps at Page 22 at the request of John G. Simpson

Dorothy Near Marley
 Dorothy Near Marley
 Plumas County Recorder

Fee \$5.00
 File No. 6670

PARCEL MAP
 OF
SUBDIVISION INTO FOUR PARCELS
 FOR
ALAN PAUL AND ROBERTA MARIE WARNER
 WITHIN
 E1/2 E1/2, SEC. 2, T.22N., R.13E.M.D.M.
 PLUMAS COUNTY, CALIFORNIA

Dec of Easements 254 OK 523