

SURVEYOR'S CERTIFICATE

This map was prepared by me or under my direction and is based upon a field survey in conformance with the requirements of the Subdivision Map Act at the request of Virginia S. Dietrich in July, 1971. I hereby certify that it conforms to the approved Tentative Map and the conditions of approval thereof, that all provisions of applicable state law and local ordinances have been complied with.

Max L. Albert
MAX L. ALBERT L.S. 3336
LICENSED LAND SURVEYOR
MAX LAVERNE ALBERT
No. 3336
STATE OF CALIFORNIA

COUNTY ENGINEER'S CERTIFICATE

This map has been examined for conformance with the requirements of the Subdivision Map Act and local ordinance.

DATED: 1-27-76

Larry A. Fites
LARRY A. FITES R. C. E. 13225

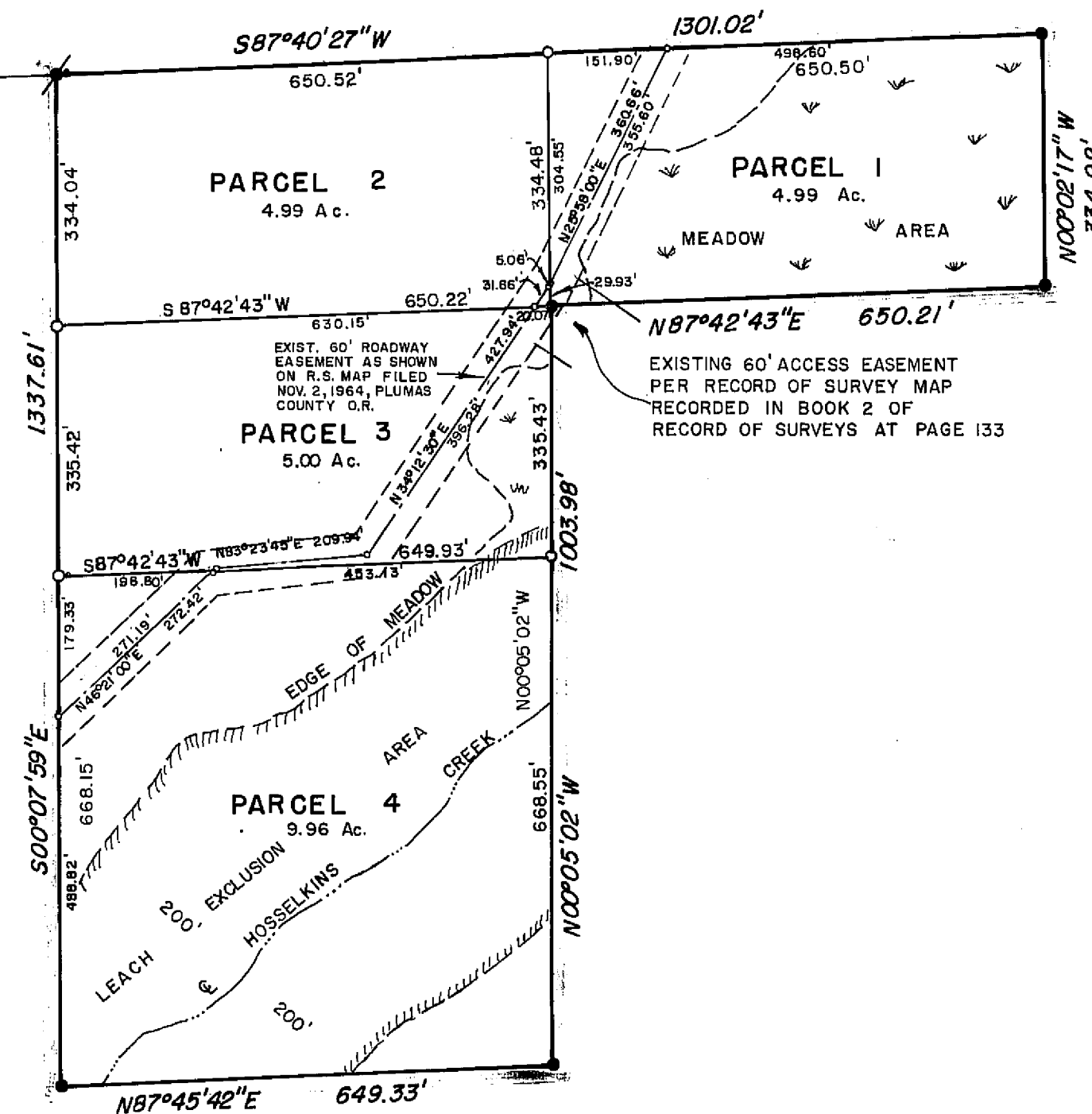
RECORDER'S CERTIFICATE

Filed this 27th day of JANUARY, 1976, at 8:45 AM, in Book S of Parcel Maps at page 64 at the request of Walter B. Grimes, Recording no. 4306
Fee \$5.00

Janet Helen Masley
County Recorder
By *Lena D. Brown*
Deputy

NOTES

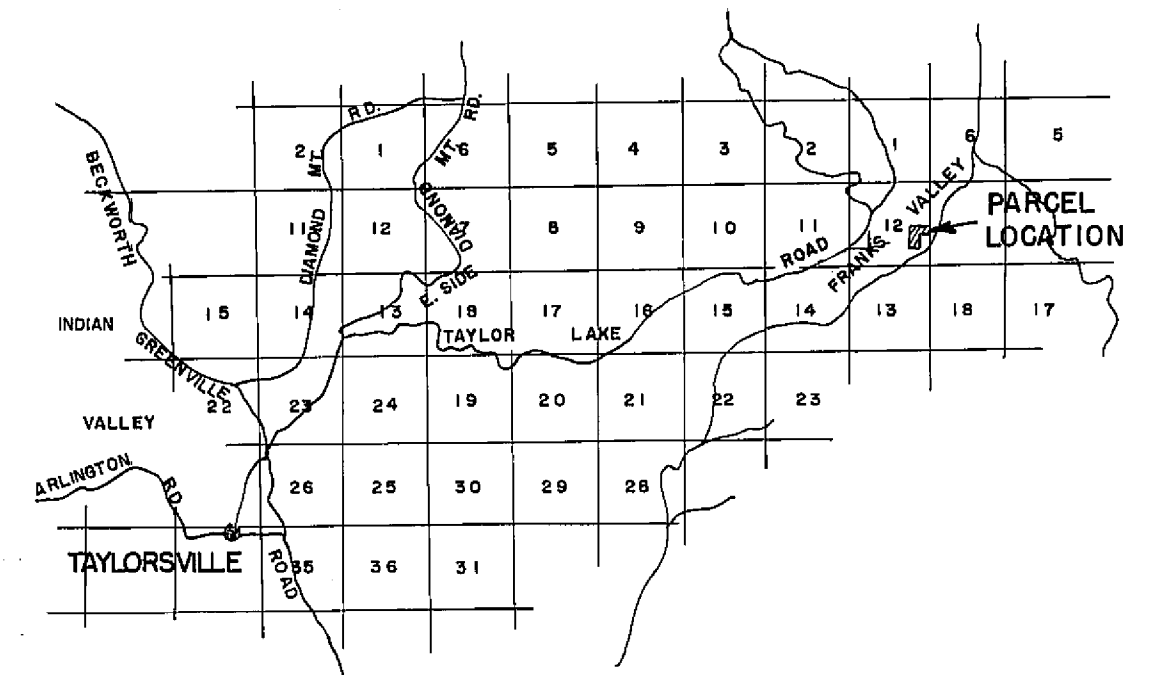
- 1. The basis of bearing is the North line of Parcel 1 given as S87°40'27"W on that certain map filed November 2, 1964, in Book 2 of Records of Survey at Page 133, Plumas County Official Records.
- 2. All of Parcel 1 as shown on that certain parcel map filed November 2, 1964, in Book 2 of Records of Survey at Page 133, Plumas County Official Records.



COUNTY TAX COLLECTOR'S CERTIFICATE

I, Douglas S. Redstreake, County Tax Collector of the County of Plumas, State of California, do hereby certify that there are no tax liens against Parcels One through Four inclusive, as shown hereon, or unpaid county, municipal, or local taxes or special assessments collected as taxes, except taxes or assessments not yet payable. Taxes or assessments which are a lien but not yet payable are estimated to be in the amount of \$ NONE.

Douglas S. Redstreake
DOUGLAS S. REDSTREAKE
Plumas County Tax Collector

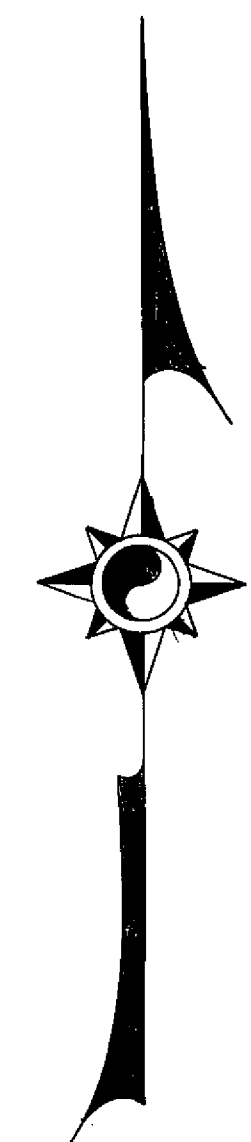


LOCATION MAP

SCALE IN MILES
0 1 2 3 4

LEGEND

- Set 3/4" iron pipe marked L.S. 3336
- Found unmarked 3/4" iron pipe
- Found 3/4" iron pipe marked RCE 7294
- Computed corner location
- Meadow area
- Leach exclusion area



PARCEL MAP

A PORTION OF SECTION 12, T.26N., R.11E., M.D.B.&M.
PLUMAS COUNTY, CALIFORNIA

SURVEY OF THE LANDS OF
VIRGINIA S. DIETRICH

SCALE 1" = 200'

JULY, 1971

WALTER B. GRIMES and ASSOC.
CIVIL ENGINEERS & LAND SURVEYORS
1356 MANGROVE AVENUE, CHICO, CALIFORNIA

Dec of ESMT 250 OR 422
Dec of Rest 250 OR 421

5 PM 64