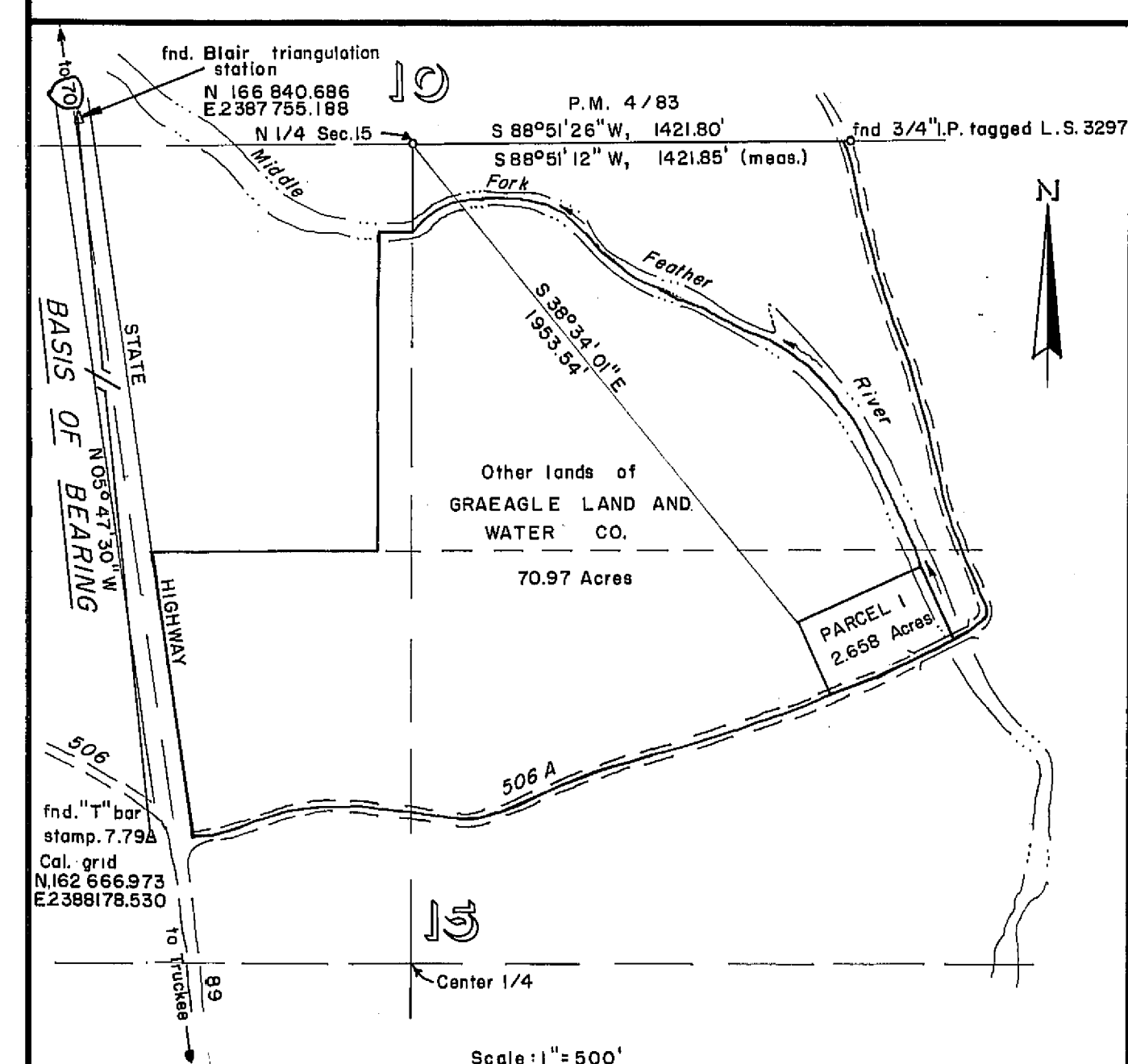
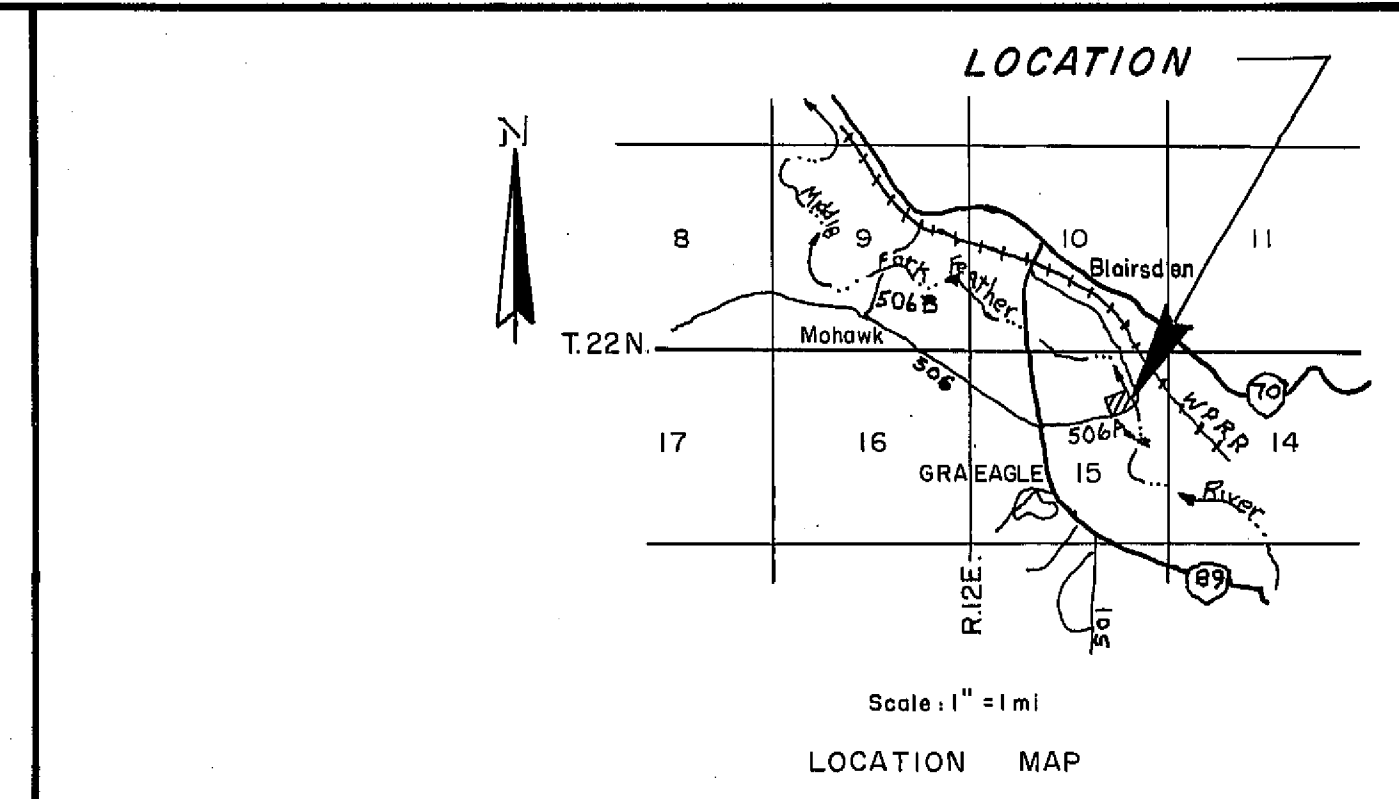
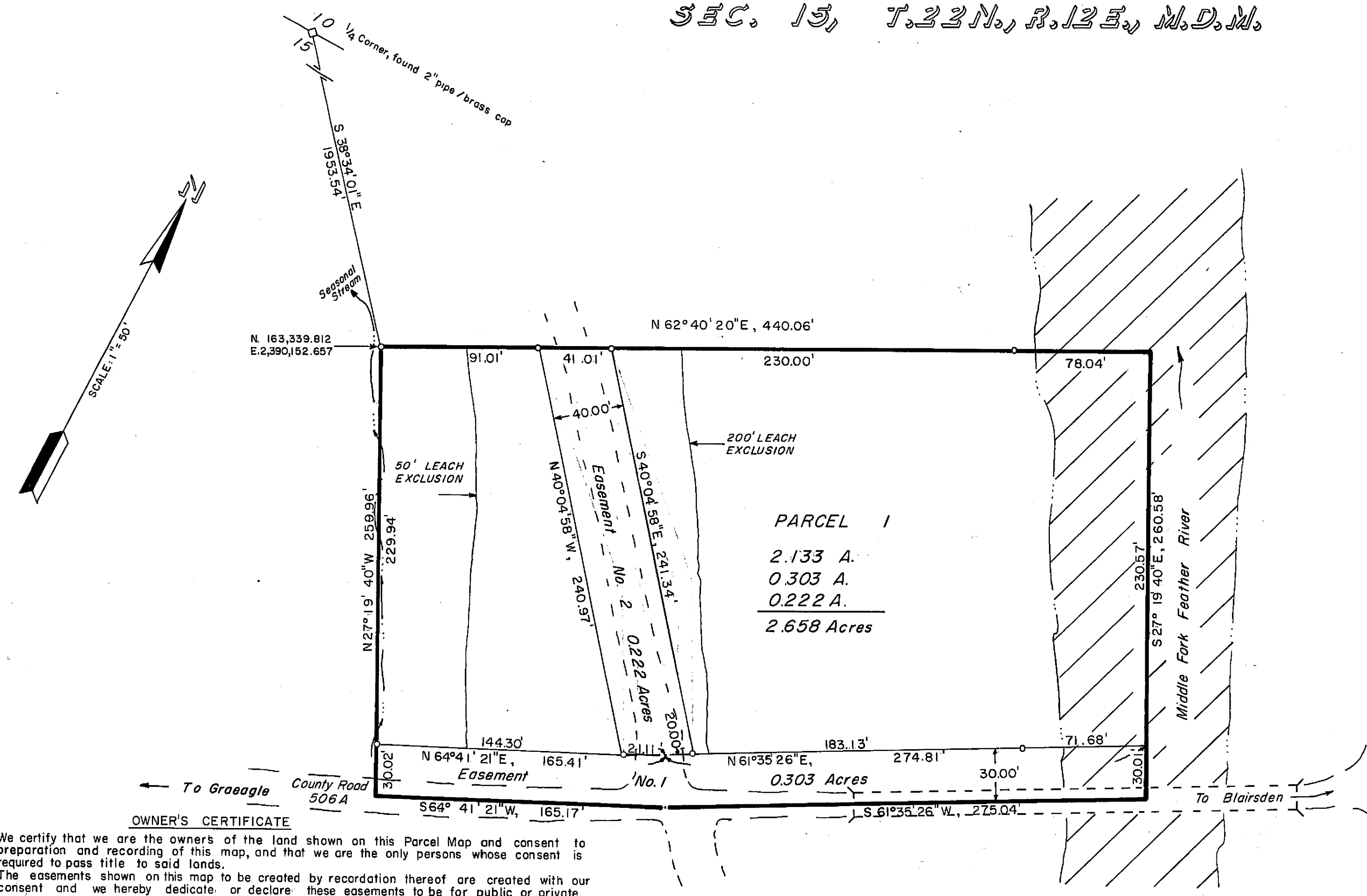


SEC. 15, T.22N., R.12E., M.D.M.



OWNER'S CERTIFICATE

We certify that we are the owners of the land shown on this Parcel Map and consent to preparation and recording of this map, and that we are the only persons whose consent is required to pass title to said lands. The easements shown on this map to be created by recordation thereof are created with our consent and we hereby dedicate, or declare, these easements to be for public or private use as indicated.

*Harvey E. Wooten*  
Vice President Graeagle Land & Water Co. Inc.

COUNTY ENGINEER'S CERTIFICATE

This map conforms with the requirements of the Subdivision Map Act and local ordinance. The offer of dedication to Plumas County of Easement 1 is hereby accepted. Dated: 1-22-76

*Sam L. Pitts*  
Plumas County Engineer

RECORDER'S CERTIFICATE

Filed this 23<sup>rd</sup> day of JANUARY, 1976, at 4:00 P.M. in Book 5 of Parcel Maps at Page 63 at the request of L.J. Brock.

*Dorothy New Markey*  
Plumas County Recorder

Fee \$5.00  
File No. 4283

NOTE

Distances shown are ground distances. All bearings are grid, based on Calif. coordinate system zone 1. Multiply distances by 0.9998588 to obtain grid distances. Easement No. 1 is granted to Plumas County for public use. Easement No. 2 is retained for non exclusive access use of Grantor.

LEGEND

o - Set 1/2" Steel Pipe tagged R.C.E. 13528  
fnd.-Found

SURVEYOR'S CERTIFICATE

This map was prepared by me or under my direction and was compiled from a field survey in conformance with the Sub-division Map Act at the request of the Plumas County Board of Supervisors in April, 1974. I hereby certify that it conforms to the approved tentative map and the conditions of approval thereof; that all provisions of applicable state law and local ordinances have been complied with.

*L.J. Brock*  
L.J. Brock, R.C.E. 13528  
Plumas County Road Commissioner

COUNTY TAX COLLECTOR'S CERTIFICATE

I, the undersigned, County Tax Collector of the County of Plumas State of California, do hereby certify that there are no tax liens against Parcel 1 as shown hereon or unpaid state, county, municipal, or local taxes, or special assessments collected as taxes, except taxes or assessments not yet payable. Taxes or assessments which are a lien but not yet payable, are estimated to be in the amount of none.

*Douglas S. Pedersen*  
Plumas County Tax Collector  
*City and Alexander, Deputy*

L.J. BROCK, R.C.E. 13528  
PLUMAS COUNTY  
ROAD COMMISSIONER  
QUINCY, CALIFORNIA

PARCEL MAP  
OF  
SUBDIVISION OF ONE PARCEL  
FOR  
GRAEAGLE LAND & WATER CO. INC.  
WITHIN THE S 1/2 OF THE NE 1/4 OF SECTION 15  
T.22N., R.12E., M.D.B. & M.  
PLUMAS COUNTY, CALIF.