

ENGINEER'S CERTIFICATE

THIS MAP WAS PREPARED BY ME OR UNDER MY DIRECTION (AND WAS COMPILED FROM RECORD DATA) AND IS BASED UPON A FIELD SURVEY IN CONFORMANCE WITH THE REQUIREMENTS OF THE SUBDIVISION MAP ACT AT THE REQUEST OF EDWIN D. & KATHERINE L. VON GREY ON MARCH 18, 1975. I HEREBY CERTIFY THAT IT CONFORMS TO THE APPROVED TENTATIVE MAP AND CONDITIONS OF APPROVAL THEREOF.

Darrell P. Payne

Darrell P. Payne, R.C.E. 8596

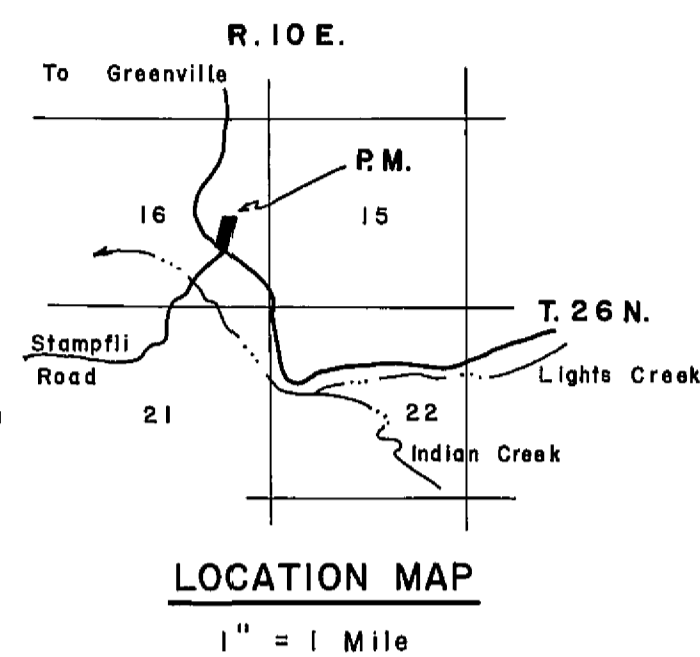
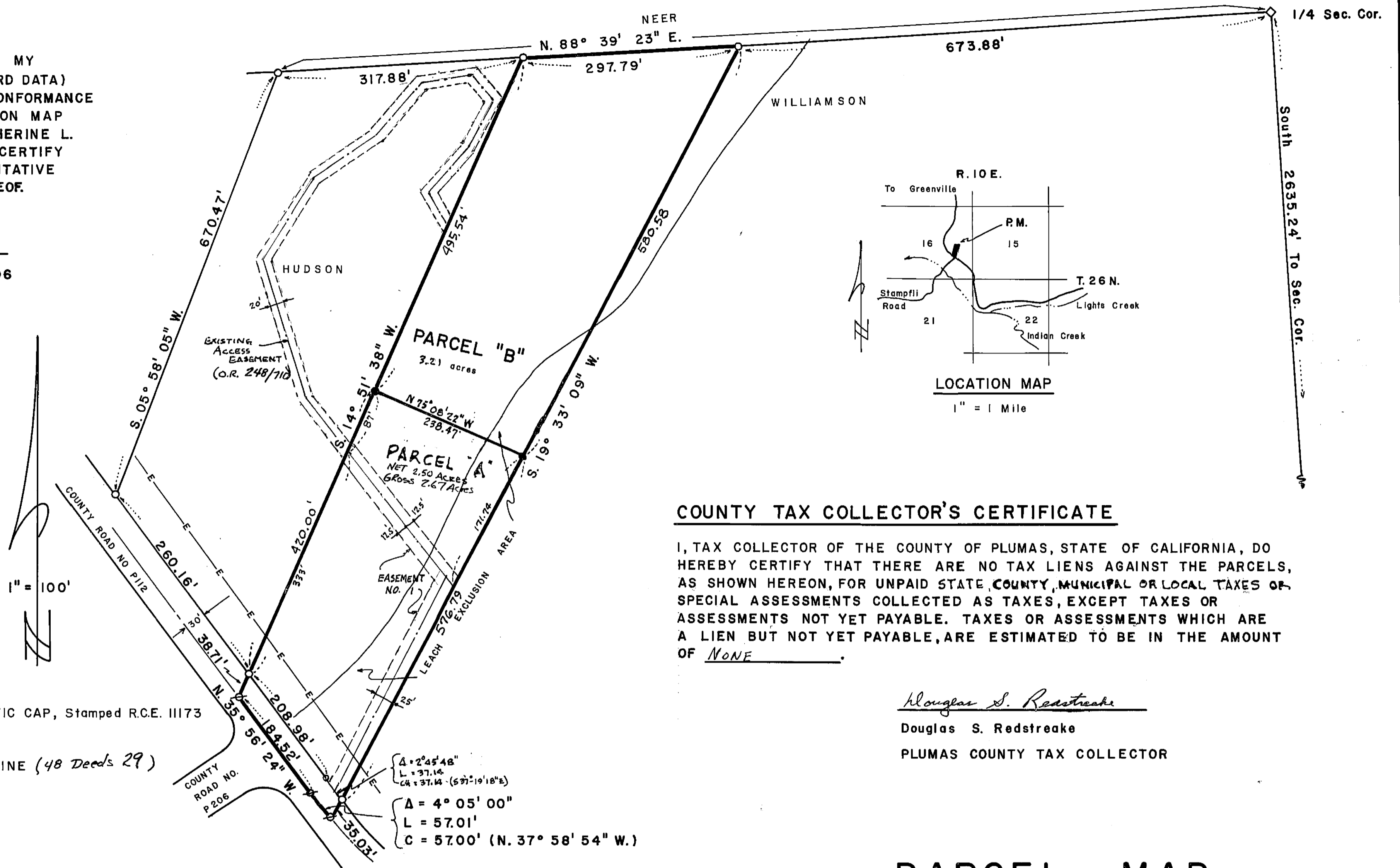
MAP NOTE

DATA OBTAINED FROM BOOK 3 OF PARCEL MAPS AT PAGE 70.

LEGEND

- SET IRON PIPE, Tagged 8596
- FOUND 1/2" STEEL PIN WITH PLASTIC CAP, Stamped R.C.E. III73
- ⊗ FOUND NAIL & SHINER
- E— EXISTING OVERHEAD ELECTRIC LINE (48 Deeds 29)

1" = 100'



COUNTY TAX COLLECTOR'S CERTIFICATE

I, TAX COLLECTOR OF THE COUNTY OF PLUMAS, STATE OF CALIFORNIA, DO HEREBY CERTIFY THAT THERE ARE NO TAX LIENS AGAINST THE PARCELS, AS SHOWN HEREON, FOR UNPAID STATE, COUNTY, MUNICIPAL OR LOCAL TAXES OR SPECIAL ASSESSMENTS COLLECTED AS TAXES, EXCEPT TAXES OR ASSESSMENTS NOT YET PAYABLE. TAXES OR ASSESSMENTS WHICH ARE A LIEN BUT NOT YET PAYABLE, ARE ESTIMATED TO BE IN THE AMOUNT OF NONE.

Douglas S. Redstreake

Douglas S. Redstreake
PLUMAS COUNTY TAX COLLECTOR

COUNTY SURVEYOR'S CERTIFICATE

THIS MAP CONFORMS WITH THE REQUIREMENTS OF THE SUBDIVISION MAP ACT AND LOCAL ORDINANCE.

DATED: 12-16-75

SIGNED:

Larry A. Fites

Larry A. Fites, R.C.E. 13225
COUNTY ENGINEER

RECORDER'S CERTIFICATE

FILED THIS 16TH DAY OF DECEMBER, 19 75, AT 8:45 A.M. IN BOOK 5 OF Parcel Maps AT PAGE 59, AT THE REQUEST OF DARRELL P. PAYNE.

SIGNED: *Dorothy Neer Marley*

Dorothy Neer Marley
COUNTY RECORDER

FEE 35⁰⁰
FILE NO. 3535

PARCEL MAP

OF
SUBDIVISION OF TWO PARCELS
FOR

Edwin D. Von Grey AND Katherine L. Von Grey

RECORD OWNERS

WITHIN SE 1/4, SEC. 16, T. 26 N., R. 10 E., M.D.M.
PLUMAS COUNTY - CALIFORNIA

Dec of Easement 249 OR 71

5 P.M. 59

7/19/71