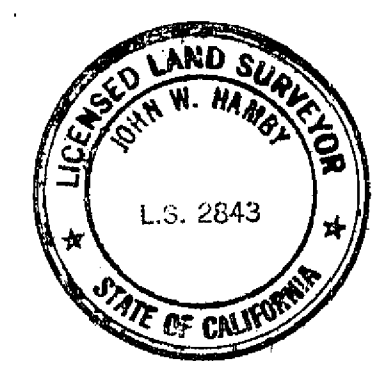


LEGEND

- = Found 3/4" Iron pipe R.E. 7294 per R.S. 3/3
- = Set 3/4" Iron pipe L.S. 2843



SURVEYOR'S CERTIFICATE

This map was prepared by me or under my direction, and is based upon a field survey in conformance with the requirements of the Subdivision Map Act of the request of M.J. DAVIDSON on August 4, 1975. I hereby certify that it conforms to the approved tentative map and the conditions of approval thereof.

John W. Hamby
John W. Hamby L.S. 2843

BASIS OF BEARING

The West line of Parcels 2 and 3, shown as N 00° 58' 41" W, on the Record of Survey filed in Book 3 of R./S. at Page 2, Plumas County Records.

NOTE

Owner's certificate is on file in the office of the Plumas County Engineer.

COUNTY SURVEYOR'S CERTIFICATE

This map conforms with the requirements of the Subdivision Map Act and local ordinance.

Dated: 9-17-75 Signed: Larry A. Fites R.C.E. 13225
County Engineer

RECORDER'S CERTIFICATE

Filed this 18TH day of SEPT, 1975, at 3:00 P.m. in Book 5 of PARCEL MAPS, at page 41, at the request of COUNTY ENGINEER

Signed: Dorothy Near Marley
Dorothy Near Marley
County Recorder

Fee \$5.00
File No. 1753

COUNTY TAX COLLECTOR'S CERTIFICATE

I, Tax Collector of the County of Plumas, State of California, do hereby certify that there are no tax liens against the Parcels, as shown hereon, for unpaid county, municipal, or local taxes or special assessments collected as taxes, except taxes not yet payable. Taxes or assessments which are a lien but not yet payable, are estimated to be in the amount of \$275.00.

Douglas S. Redstreak
Douglas S. Redstreak, Plumas County Tax Collector

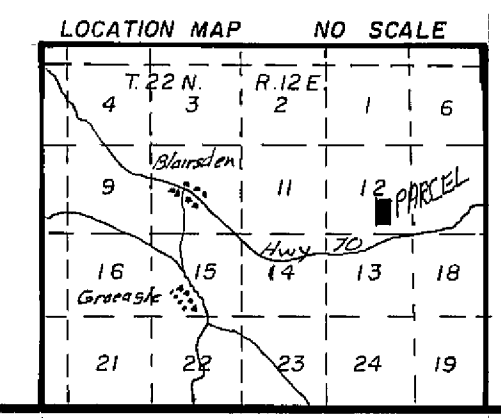
PARCEL MAP

—FOR—

M.J. DAVIDSON & JEANNE C. DAVIDSON

PARCELS 2 AND 3 OF THE RECORD OF SURVEY FILED IN BOOK 3 OF R./S. AT PAGE 3, IN THE S.E. 1/4 OF SECTION 12, T.22 N., R. 12 E., M.D.B. & M. PLUMAS COUNTY CALIFORNIA

JOHN W. HAMBY L.S. 2843
LICENSED LAND SURVEYOR
PARADISE CALIFORNIA



Dec of Rest. 246 OR 212
Dec of Vacation 246 OR 211
Dec of Esmt 246 OR 213

5 P.M. 41

