

SURVEYOR'S CERTIFICATE

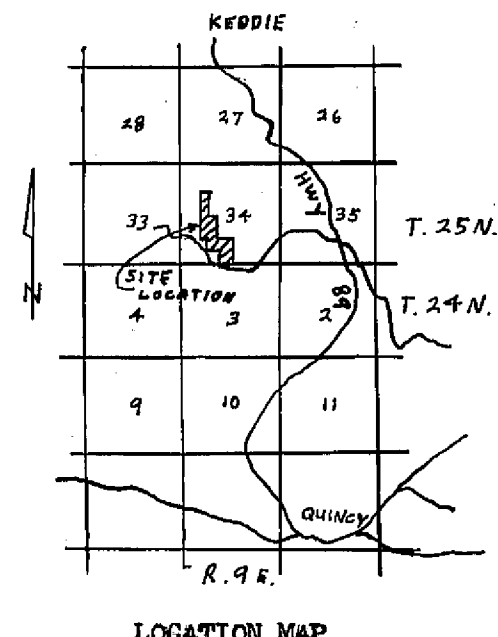
THIS MAP WAS PREPARED BY ME OR UNDER MY DIRECTION AND IS BASED UPON A FIELD SURVEY IN CONFORMANCE WITH THE REQUIREMENTS OF THE SUBDIVISION MAP ACT AT THE REQUEST OF W. CAMPBELL IN MAY 1975. I HEREBY CERTIFY THAT IT CONFORMS TO THE APPROVED TENTATIVE MAP AND THE CONDITIONS OF APPROVAL THEREOF.

Gerald C. Henderson
 GERALD C. HENDERSON LS 3297

COUNTY TAX COLLECTOR'S CERTIFICATE

I, TAX COLLECTOR OF THE COUNTY OF PLUMAS, STATE OF CALIFORNIA, DO HEREBY CERTIFY THAT THERE ARE NO TAX LIENS AGAINST THE PARCELS, AS SHOWN HEREON, FOR UNPAID COUNTY, MUNICIPAL, OR LOCAL TAXES OR SPECIAL ASSESSMENTS COLLECTED AS TAXES, EXCEPT TAXES OR ASSESSMENTS NOT YET PAYABLE. TAXES OR ASSESSMENTS WHICH ARE A LIEN BUT NOT YET PAYABLE, ARE ESTIMATED TO BE IN THE AMOUNT OF \$10.00

Douglas S. Redstrecker
 DOUGLAS S. REDSTRECKER
 PLUMAS COUNTY TAX COLLECTOR



COUNTY SURVEYOR'S CERTIFICATE

THIS MAP CONFORMS WITH THE REQUIREMENTS OF THE SUBDIVISION MAP ACT AND LOCAL ORDINANCE.

DATE: 7-21-75

Larry A. Fites
 LARRY A. FITES RCE 13225
 COUNTY ENGINEER

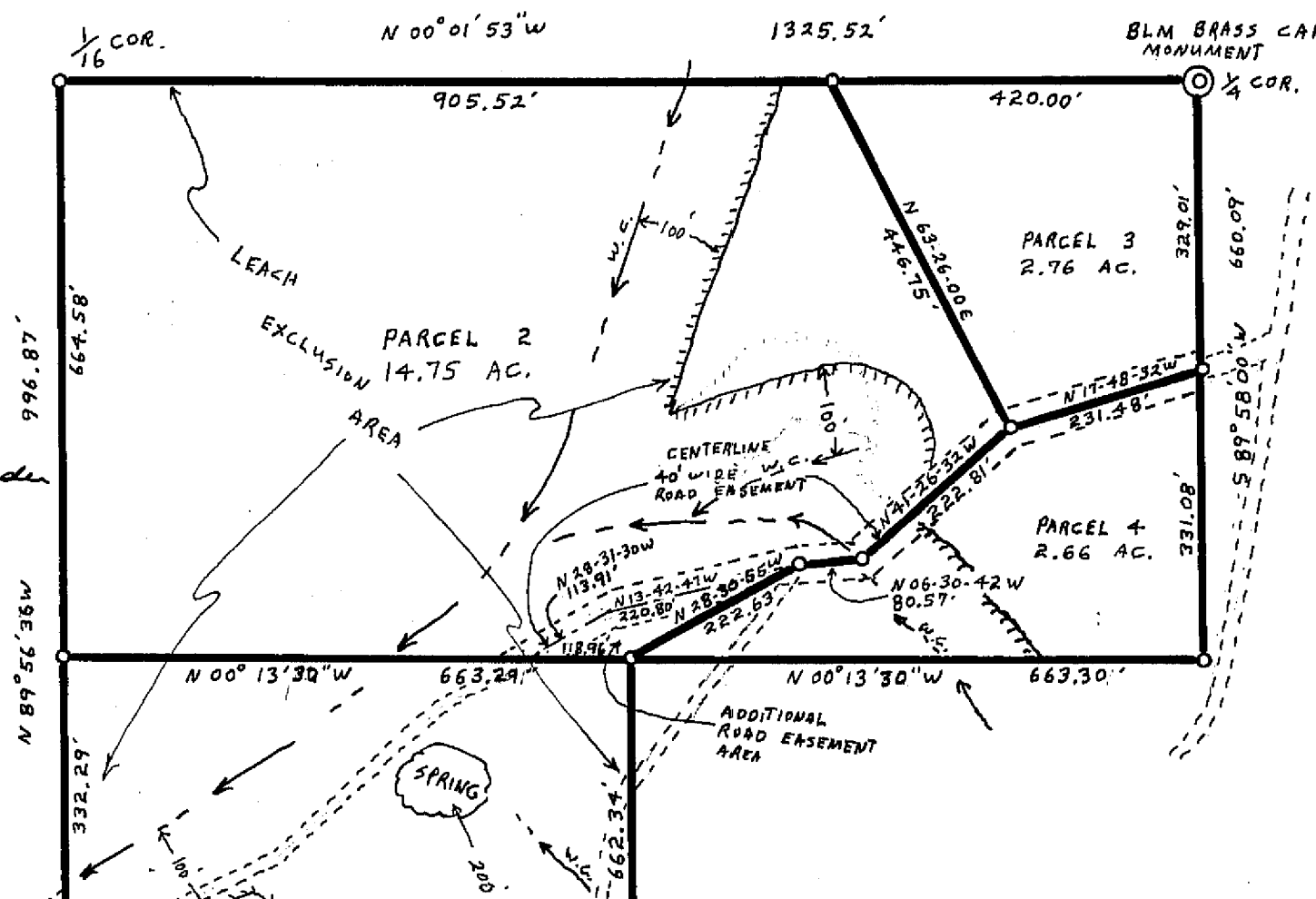
RECORDER'S CERTIFICATE

FILED THIS 21ST DAY OF JULY, 1975, AT 9:05 AM, IN BOOK 5 OF PARCEL MAPS, AT PAGE 22, AT THE REQUEST OF GERALD C. HENDERSON.

FEE \$5.00

FILE NO. 330

Dorothy Egan Smalley
 DOROTHY EGAN SMALLEY
 COUNTY RECORDER



PARCEL MAP

OF A SUBDIVISION INTO FOUR PARTS FOR W. CAMPBELL MAY 1975

PORTION OF SECTION 34, T. 25N., R. 9E., M.D.M.

PLUMAS COUNTY, CALIFORNIA

NOTE

BASIS OF BEARINGS IS THE SOUTH BOUNDARY OF SECTION 34 AS SHOWN HEREON TAKEN FROM THE 1870 GLO SURVEY NOTES.

LEGEND

FOUND 1/4 COR. OR SECTION COR. AS DESCRIBED HEREON

SET 3/4" IP TAGGED LS 3297

LEACH SETBACK LINE

WATERCOURSE

