

TAX COLLECTOR'S CERTIFICATE

I, THE UNDERSIGNED COUNTY TAX COLLECTOR OF THE COUNTY OF PLUMAS, STATE OF CALIFORNIA, DO HEREBY CERTIFY THAT THERE ARE NO TAX LIENS AGAINST PARCELS 1 THROUGH 3 INCLUSIVE AS SHOWN HEREON, OR UNPAID STATE, COUNTY, MUNICIPAL, OR LOCAL TAXES, OR SPECIAL ASSESSMENTS COLLECTED AS TAXES EXCEPT TAXES OR ASSESSMENTS NOT YET PAYABLE. TAXES OR ASSESSMENTS WHICH ARE A LIEN BUT NOT YET PAYABLE ARE ESTIMATED TO BE IN THE AMOUNT OF \$130.00

Douglas S. Redstreak  
DOUGLAS S. REDSTREAK  
PLUMAS COUNTY TAX COLLECTOR

SURVEYOR'S CERTIFICATE

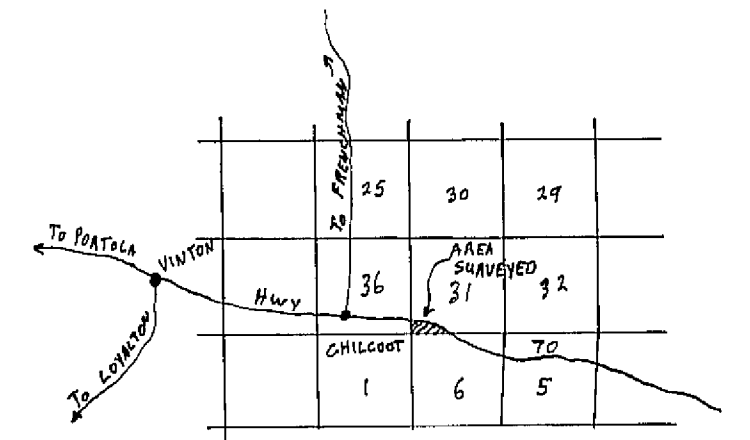
THIS MAP WAS PREPARED BY ME OR UNDER MY DIRECTION AND IS BASED UPON A FIELD SURVEY IN CONFORMANCE WITH THE REQUIREMENTS OF THE SUBDIVISION MAP ACT AT THE REQUEST OF F. PFEIFFER IN JANUARY 1975. I HEREBY CERTIFY THAT IT CONFORMS TO THE APPROVED TENTATIVE MAP AND THE CONDITIONS OF APPROVAL THEREOF, AND THAT ALL PROVISIONS OF APPLICABLE STATE LAW AND LOCAL ORDINANCES HAVE BEEN COMPLIED WITH.

Gerald C. Henderson  
GERALD C. HENDERSON LS 3297

COUNTY SURVEYOR'S CERTIFICATE

THIS MAP HAS BEEN EXAMINED THIS 30th DAY OF May, 1975, FOR CONFORMANCE WITH THE REQUIREMENTS OF SECTION 11575 OF THE SUBDIVISION MAP ACT.

Larry A. Fites  
LARRY A. FITES RCE 13225  
COUNTY SURVEYOR



COUNTY RECORDER'S CERTIFICATE

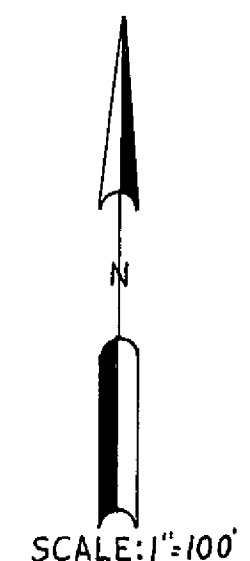
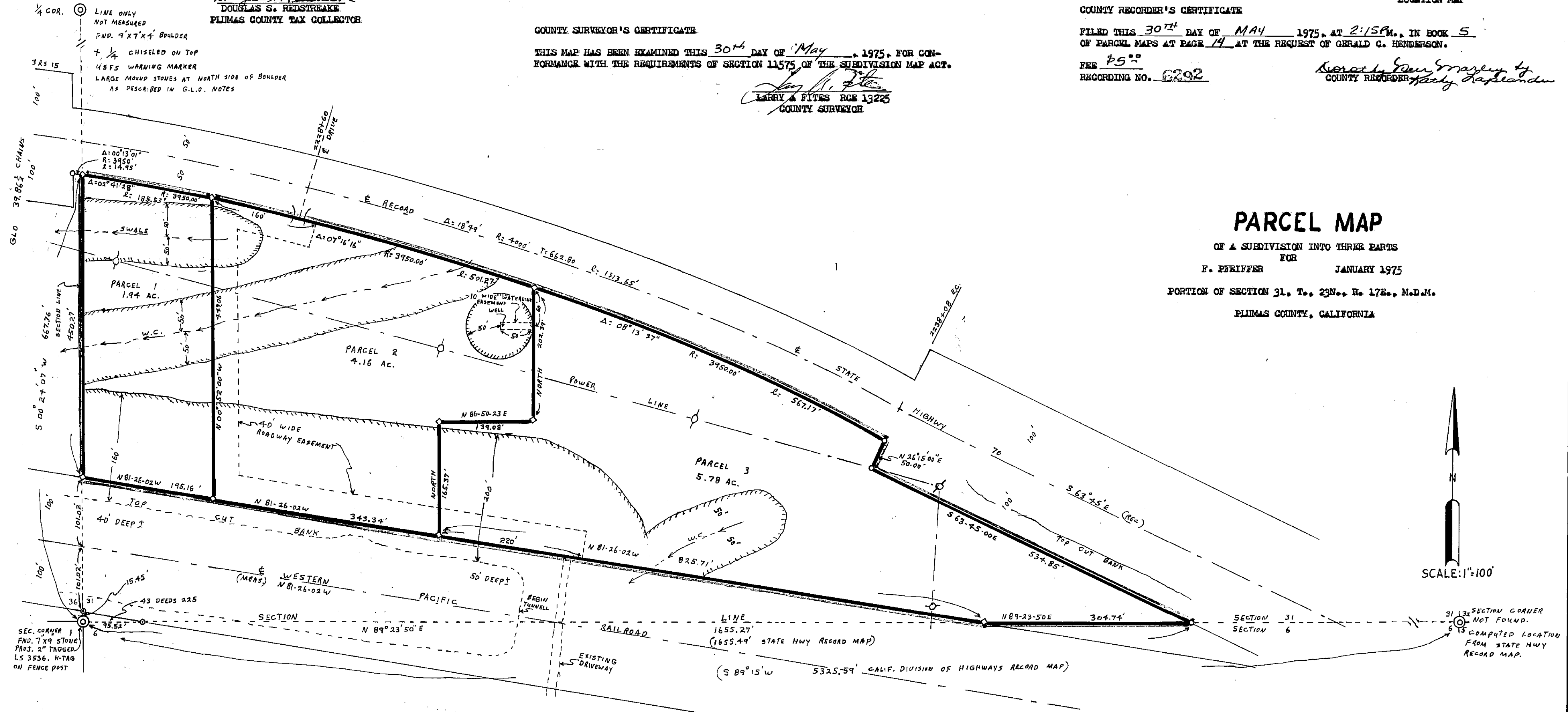
FILED THIS 30th DAY OF MAY 1975, AT 2:15 PM., IN BOOK 5 OF PARCEL MAPS AT PAGE 14, AT THE REQUEST OF GERALD C. HENDERSON.

FEE \$5.00  
RECORDING NO. 6292

Gerald C. Henderson  
COUNTY RECORDER

PARCEL MAP

OF A SUBDIVISION INTO THREE PARTS  
FOR  
F. PFEIFFER  
JANUARY 1975  
PORTION OF SECTION 31, T., 23N., R. 17E., M.D.M.  
PLUMAS COUNTY, CALIFORNIA



LEGEND

- SECTION CORNER AS DESCRIBED HEREON OR 1/4 COR. FOUND STATE OF CALIF. CONCRETE MONUMENT SET 3/4" IP TAGGED LS 3297
- COMPUTED CORNER LOCATION
- WATERCOURSE
- LEACH SETBACK LINE

NOTE

BASIS OF BEARING IS FROM THE CALIFORNIA DIVISION OF HIGHWAYS RECORD MAP SHOWN AS S 63° 15' E. THEREON.

GERALD C. HENDERSON  
LICENSED LAND SURVEYOR  
P. O. BOX 13  
PORTOLA, CALIFORNIA