

TAX COLLECTOR'S CERTIFICATE

I, THE UNDERSIGNED COUNTY TAX COLLECTOR OF THE COUNTY OF PLUMAS STATE OF CALIFORNIA, DO HEREBY CERTIFY THAT THERE ARE NO TAX LIENS AGAINST PARCELS 1 THROUGH 4 INCLUSIVE AS SHOWN HEREON, OR UNPAID STATE, COUNTY, MUNICIPAL, OR LOCAL TAXES, OR SPECIAL ASSESSMENTS COLLECTED AS TAXES EXCEPT TAXES OR ASSESSMENTS NOT YET PAYABLE. TAXES OR ASSESSMENTS WHICH ARE A LIEN BUT NOT YET PAYABLE ARE ESTIMATED TO BE IN THE AMOUNT OF \$385.⁰⁰

Douglas S. Redstreak
DOUGLAS S. REDSTRAKE

SURVEYOR'S CERTIFICATE

THIS MAP WAS PREPARED BY ME OR UNDER MY DIRECTION AND IS BASED UPON A FIELD SURVEY IN CONFORMANCE WITH THE REQUIREMENTS OF THE SUBDIVISION MAP ACT AT THE REQUEST OF S. SMITH IN SEPTEMBER 1974. I HEREBY CERTIFY THAT IT CONFORMS TO THE APPROVED TENTATIVE MAP AND THE CONDITIONS OF APPROVAL THEREOF, AND THAT ALL PROVISIONS OF APPLICABLE STATE LAW AND LOCAL ORDINANCES HAVE BEEN COMPLIED WITH.

Gerald C. Henderson
GERALD C. HENDERSON LS 3297

COUNTY SURVEYOR'S CERTIFICATE

THIS MAP HAS BEEN EXAMINED FOR CONFORMANCE WITH THE REQUIREMENTS OF SECTION 11575 OF THE SUBDIVISION MAP ACT THIS 12TH DAY OF May 1975.

Larry A. Fites
LARRY A. FITES RCE 13225

COUNTY RECORDER'S CERTIFICATE

FILED THIS 12TH DAY OF MAY, 1975 AT 11:30 A.M., IN BOOK 5 OF PARCEL MAPS AT PAGE 11, AT THE REQUEST OF GERALD C. HENDERSON.

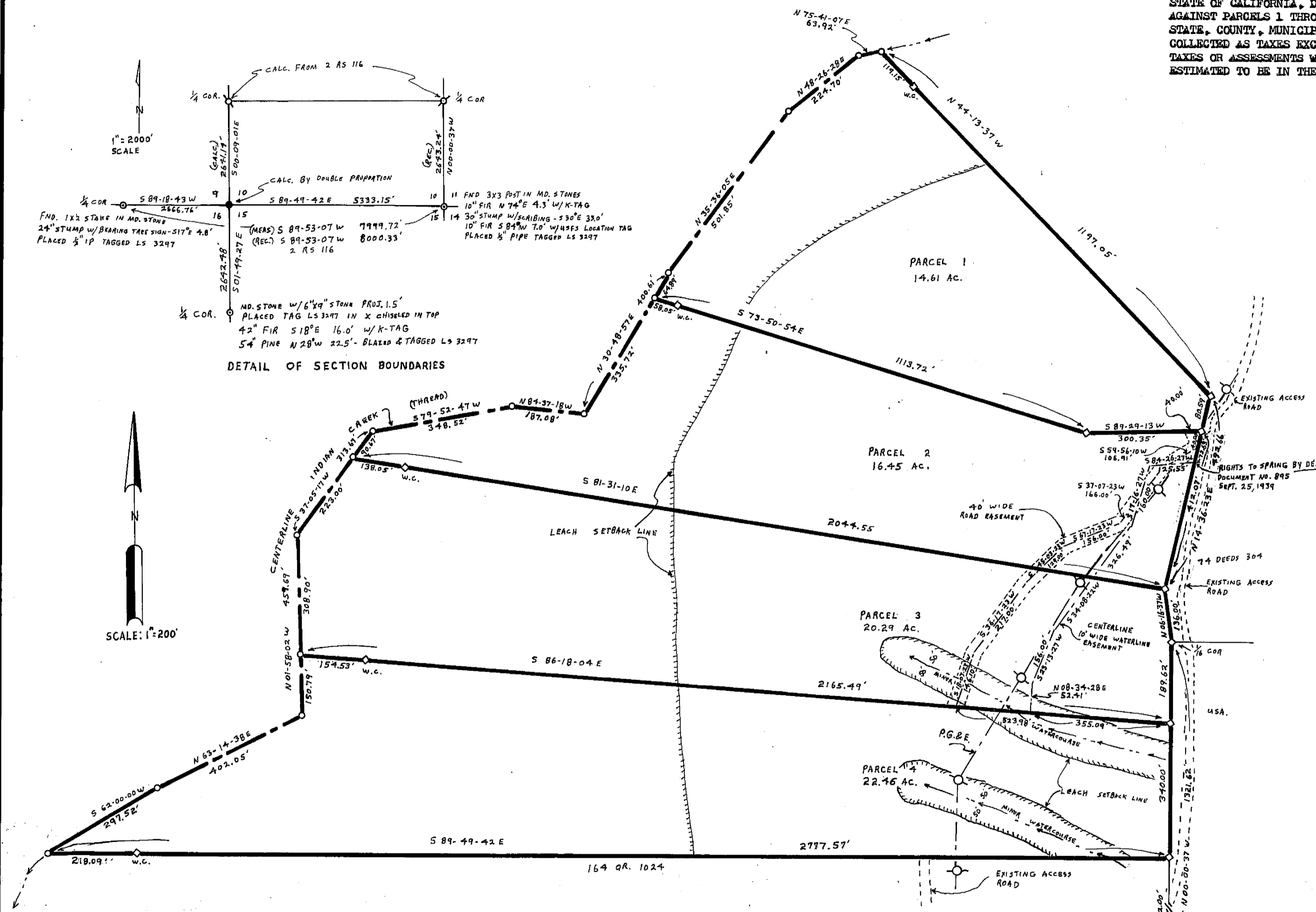
FEE \$5.00
RECORDING NO. _____

6049
Dorothy New Marley
COUNTY RECORDER
by *Lana S. Brown*
Deputy

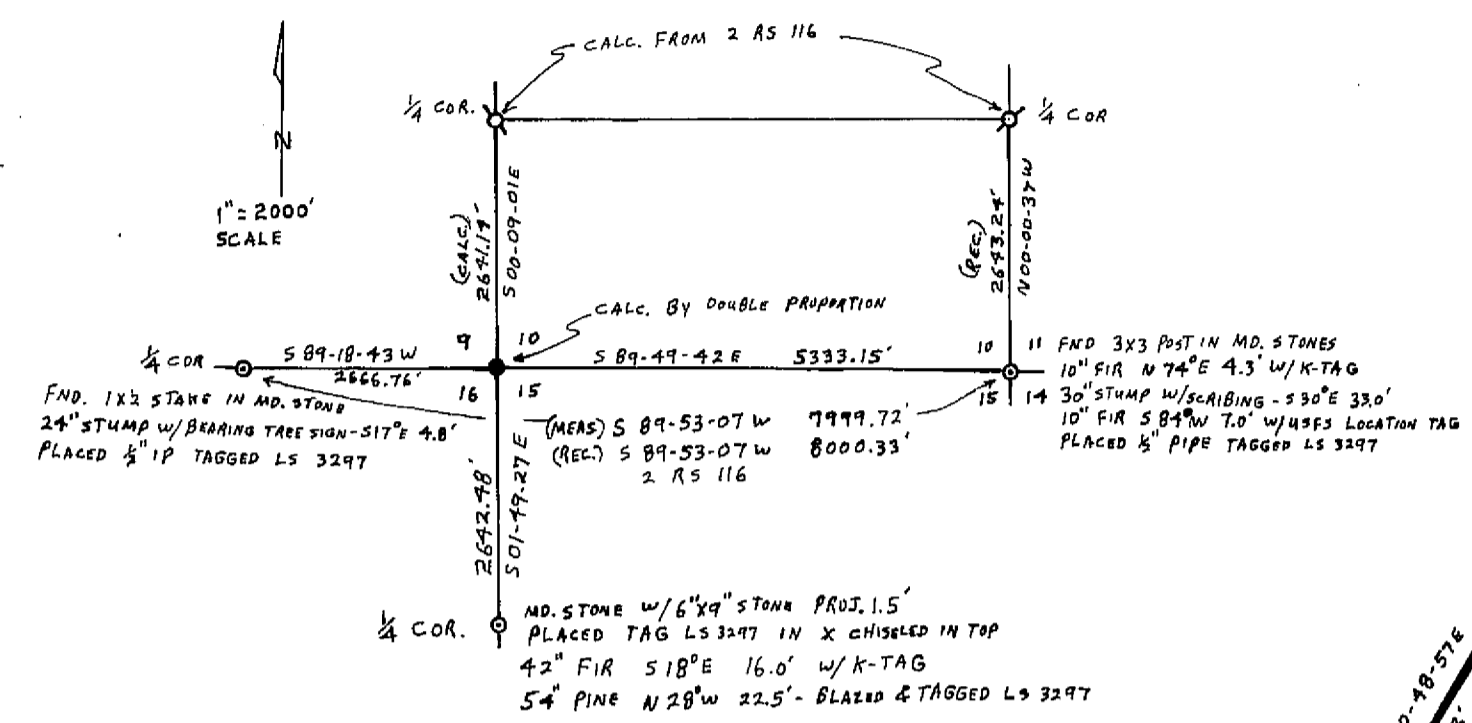
PARCEL MAP

OF A SUBDIVISION INTO FOUR PARTS
FOR
S. SMITH SEPTEMBER 1974
PORTION OF SECTIONS 10 & 11, T. 25N., R. 11E., M. D. M.
PLUMAS COUNTY, CALIFORNIA

GERALD C. HENDERSON
LICENSED LAND SURVEYOR
P. O. BOX 13
PORTOLA, CALIFORNIA



DETAIL OF SECTION BOUNDARIES



NOTE

BASIS OF BEARING IS TAKEN FROM THAT CERTAIN MAP FILED IN BOOK 2 OF RECORD OF SURVEYS AT PAGE 116, PLUMAS COUNTY RECORDS.

LEGEND

- FOUND SECTION COR. OR 1/4 COR. AS DESCRIBED HEREON
- COMPUTED SECTION COR. LOCATION
- CORNER LOCATION COMPUTED FROM RECORD
- ◇ SET 1/4" IP TAGGED LS 3297
- COMPUTED CORNER LOCATION
- WITNESS CORNER
- LEACH SETBACK LINE