

TAX COLLECTOR'S CERTIFICATE

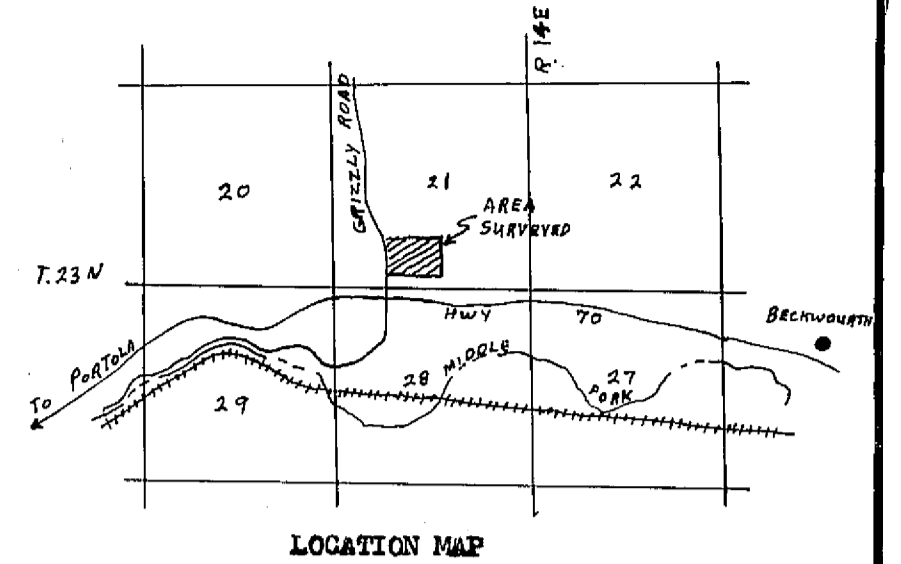
I, THE UNDERSIGNED COUNTY TAX COLLECTOR OF THE COUNTY OF PLUMAS, STATE OF CALIFORNIA, DO HEREBY CERTIFY THAT THERE ARE NO TAX LIENS AGAINST PARCELS 1 THROUGH 3 INCLUSIVE AS SHOWN HEREOF, OR UNPAID STATE, COUNTY, MUNICIPAL, OR LOCAL TAXES, OR SPECIAL ASSESSMENTS COLLECTED AS TAXES EXCEPT TAXES OR ASSESSMENTS NOT YET PAYABLE. TAXES OR ASSESSMENTS WHICH ARE A LIEN BUT NOT YET PAYABLE ARE ESTIMATED TO BE IN THE AMOUNT OF \$130.00

Douglas S. Redstreak
DOUGLAS S. REDSTRAKE
PLUMAS COUNTY TAX COLLECTOR
By Luis Alexander Deputy

SURVEYOR'S CERTIFICATE

THIS MAP WAS PREPARED BY ME OR UNDER MY DIRECTION AND IS BASED UPON A FIELD SURVEY IN CONFORMANCE WITH THE REQUIREMENTS OF THE SUBDIVISION MAP ACT AT THE REQUEST OF L. BEECE AND R. SCHEUFELER IN FEBRUARY 1975. I HEREBY CERTIFY THAT IT CONFORMS TO THE APPROVED TENTATIVE MAP AND THE CONDITIONS OF APPROVAL THEREOF, AND THAT ALL PROVISIONS OF APPLICABLE STATE LAW AND LOCAL ORDINANCES HAVE BEEN COMPLIED WITH.

Gerald C. Henderson
GERALD C. HENDERSON LS 3297



COUNTY SURVEYOR'S CERTIFICATE

THIS MAP HAS BEEN EXAMINED THIS 2nd DAY OF MAY 1975, FOR CONFORMANCE WITH THE REQUIREMENTS OF SECTION 11575 OF THE SUBDIVISION MAP ACT.

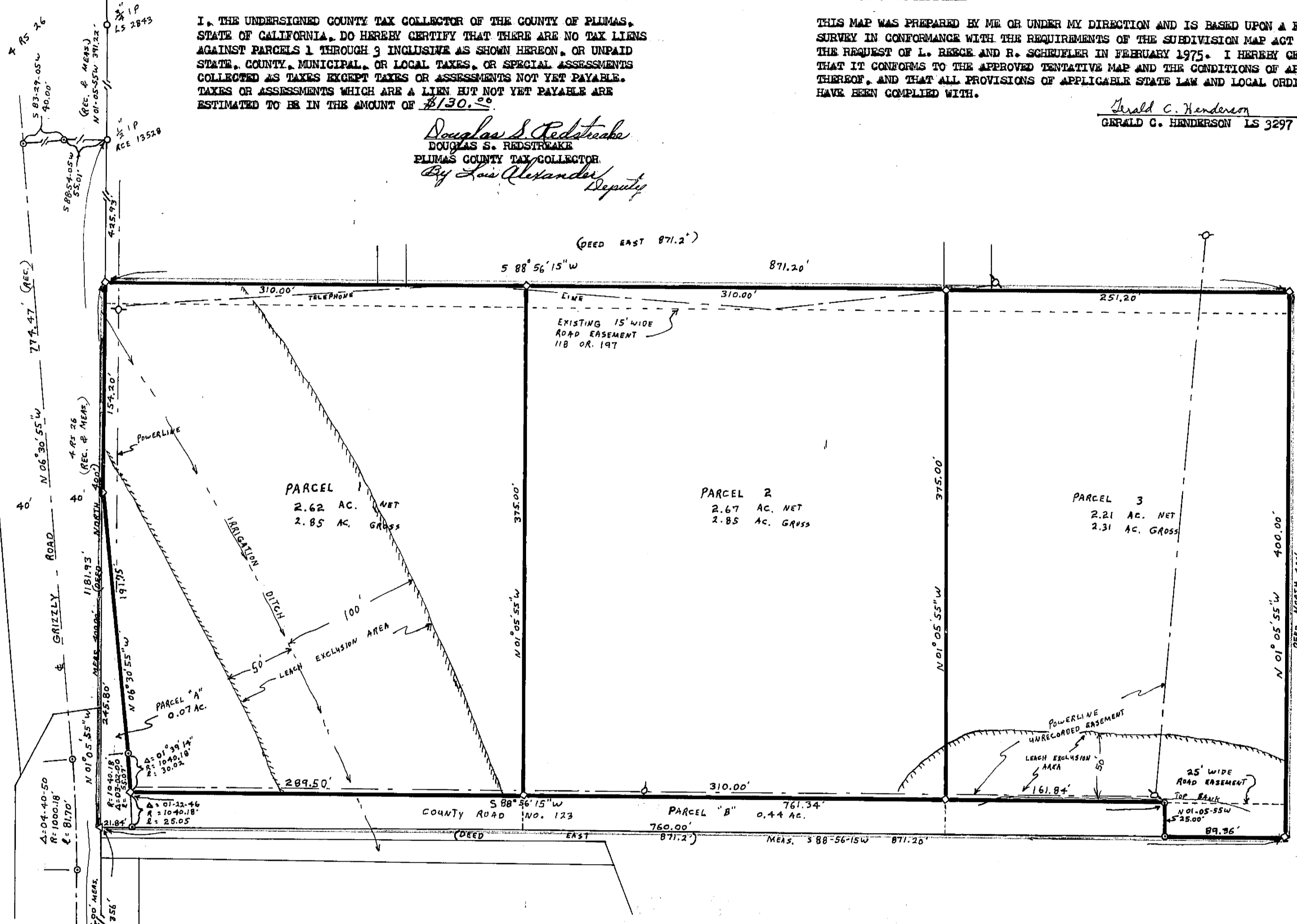
Larry A. Fite
LARRY A. FITE RCE 13225
COUNTY SURVEYOR

COUNTY RECORDER'S CERTIFICATE

FILED THIS 5th DAY OF MAY 1975, AT 11:30 AM., IN BOOK OF PARCEL MAPS AT PAGE _____ AT THE REQUEST OF GERALD C. HENDERSON.

FEE \$20
RECORDING NO. 500

Donna Jean Marley
COUNTY RECORDER
By Jana S. Brown



PARCEL MAP

OF A SUBDIVISION INTO THREE PARTS
FOR
L. BEECE AND R. SCHEUFELER FEBRUARY 1975
PORTION OF SECTION 21, T. 29N., R. 14E., M.D.M.
PLUMAS COUNTY, CALIFORNIA

LEGEND

- FOUND MONUMENT AS DESCRIBED HEREOF ○
- SET NAIL AND SHINER WITH TAG LS 3297 △
- SET 3/4" IP TAGGED LS 3297 ◇
- COMPUTED CORNER LOCATION ⊙
- LEACH SETBACK LINE ~~~~~

NOTE

BASIS OF BEARING IS TAKEN FROM THAT CERTAIN MAP FILED IN BOOK 4 OF RECORD OF SURVEYS AT PAGE 26, PLUMAS COUNTY RECORDS.

GERALD C. HENDERSON
LICENSED LAND SURVEYOR
P. O. BOX 13
PORTOLA, CALIFORNIA

Dec of Esmt 242 OR 356
Dec of Rest. 242 OR 359

5 P.M. 9