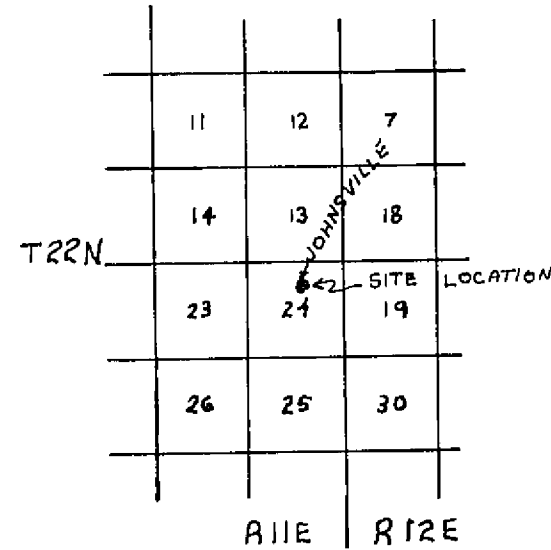
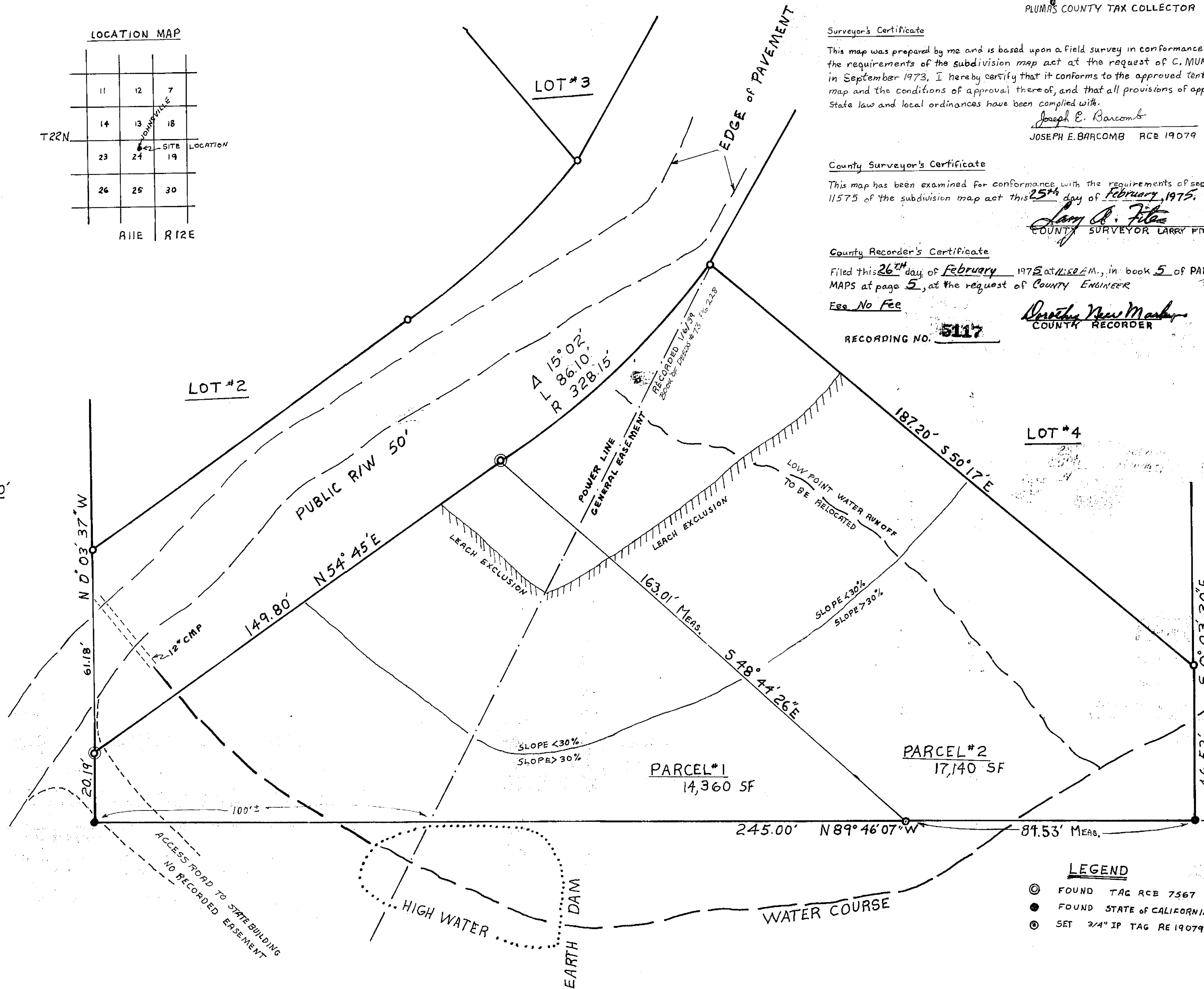


LOCATION MAP



SCALE 1" = 20'



Tax Collector's Certificate

I, the undersigned County Tax Collector of the County of Plumas, State of California, do hereby certify that there are no tax liens against PARCELS 1+2 shown hereon, or unpaid state, county, municipal, or local taxes, or special assessments, collected as taxes, except taxes or assessments not yet payable. Taxes or assessments which are a lien but not yet payable are estimated to be in the amount of NONE

Joseph E. Barcomb
 PLUMAS COUNTY TAX COLLECTOR

Surveyor's Certificate

This map was prepared by me and is based upon a field survey in conformance with the requirements of the subdivision map act at the request of C. MURRAY in September 1973. I hereby certify that it conforms to the approved tentative map and the conditions of approval thereof, and that all provisions of applicable State law and local ordinances have been complied with.

Joseph E. Barcomb
 JOSEPH E. BARCOMB RCE 19079

County Surveyor's Certificate

This map has been examined for conformance with the requirements of section 11575 of the subdivision map act this 25th day of February, 1975.

Larry A. Fites
 COUNTY SURVEYOR LARRY FITES RCE 13225

County Recorder's Certificate

Filed this 26th day of February 1975 at 11:58 A.M., in book 5 of PARCEL MAPS at page 5, at the request of COUNTY ENGINEER

Fee No Fee

Brother Newmark
 COUNTY RECORDER

RECORDING NO. 5117

**RECORDED
 PARCEL MAP**

of a subdivision into two parts
 for
 C. Murray - February 1974
 portion of section 24, T22N., R. 11E., M.D.M.
 lot I in book 3 of Maps at page 34
 PLUMAS COUNTY
 CALIF.

Joseph E. Barcomb, RCE 19079
 P.O. Box 38
 Quincy, Calif. 95971

NOTE: This map is a rerecording of the parcel map filed July 5, 1974 in Book of Parcel Maps page 91.

NOTE: Basis of bearing (defined by two State of California brass monuments) is taken from the East-West line, which forms the southern property line of lot #1, that is shown on a certain map filed in BOOK 3, PAGE 34, BOOK OF MAPS, PLUMAS COUNTY RECORDS.

LEGEND

- ⊙ FOUND TAG RCE 7567
- FOUND STATE OF CALIFORNIA BRASS CAP
- ⊙ SET 3/4" IP TAG RE 19079

S-PM 5