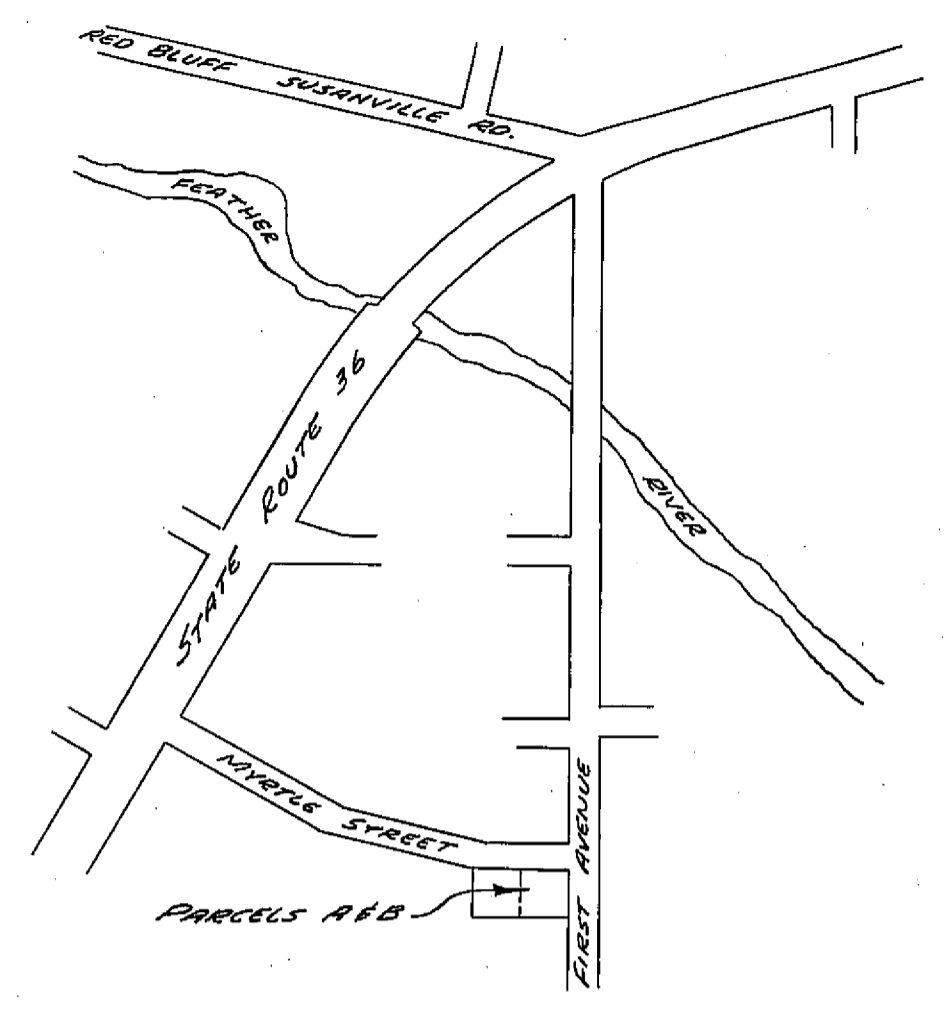


SCALE: 1" = 30'



VICINITY MAP
Not to Scale

LEGEND

- Set 1/2" I.P. tagged C.S. 3202
- Fnd. iron pipe as noted. All found corners not tagged were retagged C.S. 3202.

CERTIFICATES:

I, the undersigned, County Tax Collector of the County of Plumas, State of California, do hereby certify that there are no tax liens against Parcels A & B as shown hereon, or unpaid state, county, municipal or local taxes or special assessments collected as taxes, except taxes or assessments not yet payable. Taxes or assessments which are a lien but not yet payable, are estimated to be in the amount of NONE.

Douglas S. Redstreake
Douglas S. Redstreake,
Plumas County Tax Collector.

This map was prepared by me or under my direction, and was compiled from a field survey in conformance with the requirements of the Subdivision Map Act at the request of John B. Guess & Roy E. Huntsman in May, 1974. I hereby certify that it conforms to the approved tentative map and the conditions of approval thereof; that all provisions of applicable state law and local ordinances have been complied with.

Paul E. Simpson
Paul E. Simpson, Licensed Land Surveyor No. 3202
STATE OF CALIFORNIA

This map has been examined this 18th day of February, 1975 for conformance with the requirements of Section 11575 of the Subdivision Map Act.

Carry A. Fitas
Carry A. Fitas, R.G.E. 13285, Plumas Co. Engineer

Filed for record this 18th day of February, 1975 at 8:40 A.M. in Book 5 of Parcel Maps at page 2 at the request of Paul E. Simpson.
Fee: 5⁰⁰ File No. 5021

Dorothy Neer Marley, by Kathy Repland
Dorothy Neer Marley, Plumas Co. Recorder Deputy

PARCEL MAP FOR
JOHN B. GUESS & ROY E. HUNTSMAN

OF LOT 1, BLOCK 3, CENTRAL ADDITION
TOWN OF CHESTER
PLUMAS COUNTY, CALIFORNIA

SCALE: 1" = 30'

PAUL E. SIMPSON & ASSOCIATES
ENGINEERING, PLANNING & SURVEYING
SUSANVILLE, CALIFORNIA