

TAX COLLECTOR'S CERTIFICATE

I, THE UNDERSIGNED COUNTY TAX COLLECTOR OF THE COUNTY OF PLUMAS, STATE OF CALIFORNIA, DO HEREBY CERTIFY THAT THERE ARE NO TAX LIENS AGAINST PARCELS 1 AND 2 INCLUSIVE AS SHOWN HEREON, OR UNPAID STATE, COUNTY, MUNICIPAL, OR LOCAL TAXES, OR SPECIAL ASSESSMENTS COLLECTED AS TAXES EXCEPT TAXES OR ASSESSMENTS NOT YET PAYABLE. TAXES OR ASSESSMENTS WHICH ARE A LIEN BUT NOT YET PAYABLE ARE ESTIMATED TO BE IN THE AMOUNT OF NONE

Douglas S. Hedstreak  
DOUGLAS S. HEDSTREAK  
PLUMAS COUNTY TAX COLLECTOR

COUNTY SURVEYOR'S CERTIFICATE

THIS MAP HAS BEEN EXAMINED FOR CONFORMANCE WITH THE REQUIREMENTS OF SECTION 11575 OF THE SUBDIVISION MAP ACT THIS 29th DAY OF October 1974.

Larry A. Fites  
LARRY A. FITES RCE 13225  
PLUMAS COUNTY SURVEYOR

SURVEYOR'S CERTIFICATE

THIS MAP WAS PREPARED BY ME OR UNDER MY DIRECTION AND IS BASED UPON A FIELD SURVEY IN CONFORMANCE WITH THE REQUIREMENTS OF THE SUBDIVISION MAP ACT AT THE REQUEST OF J. SANTONI IN AUGUST 1974. I HEREBY CERTIFY THAT IT CONFORMS TO THE APPROVED TENTATIVE MAP AND THE CONDITIONS OF APPROVAL THEREOF, AND THAT ALL PROVISIONS OF APPLICABLE STATE LAW AND LOCAL ORDINANCES HAVE BEEN COMPLIED WITH.

Gerald C. Henderson  
GERALD C. HENDERSON LS 3297

COUNTY RECORDER'S CERTIFICATE

FILED THIS 29th DAY OF October 1974, AT 2:30 PM, IN BOOK 4 OF PARCEL MAPS AT PAGE 115 AT THE REQUEST OF GERALD C. HENDERSON.

FEE \$500  
RECORDING NO. 3234

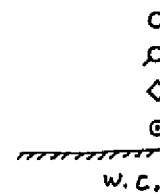
Gerald C. Henderson  
COUNTY RECORDER

NOTE

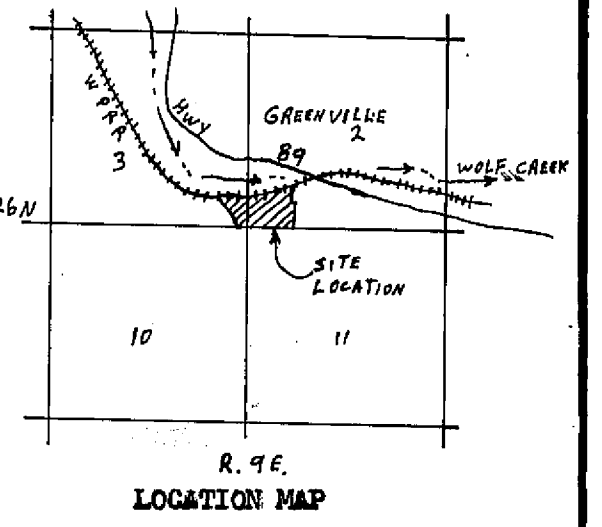
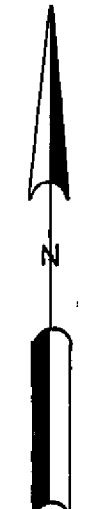
BASIS OF HEARING IS THE EAST LINE OF SECTION 3 AS SHOWN ON THAT CERTAIN MAP FILED IN BOOK 4 OF PARCEL MAPS AT PAGE 11, PLUMAS COUNTY RECORDS.

LEGEND

FOUND MONUMENT AS DESCRIBED HEREON  
FOUND 1/2" IP TAGGED BCE 15265  
SET 3/4" IP TAGGED LS 3297  
COMPUTED CORNER LOCATION  
LEACH SETBACK LINE  
WATERCOURSE



SCALE: 1"=100'



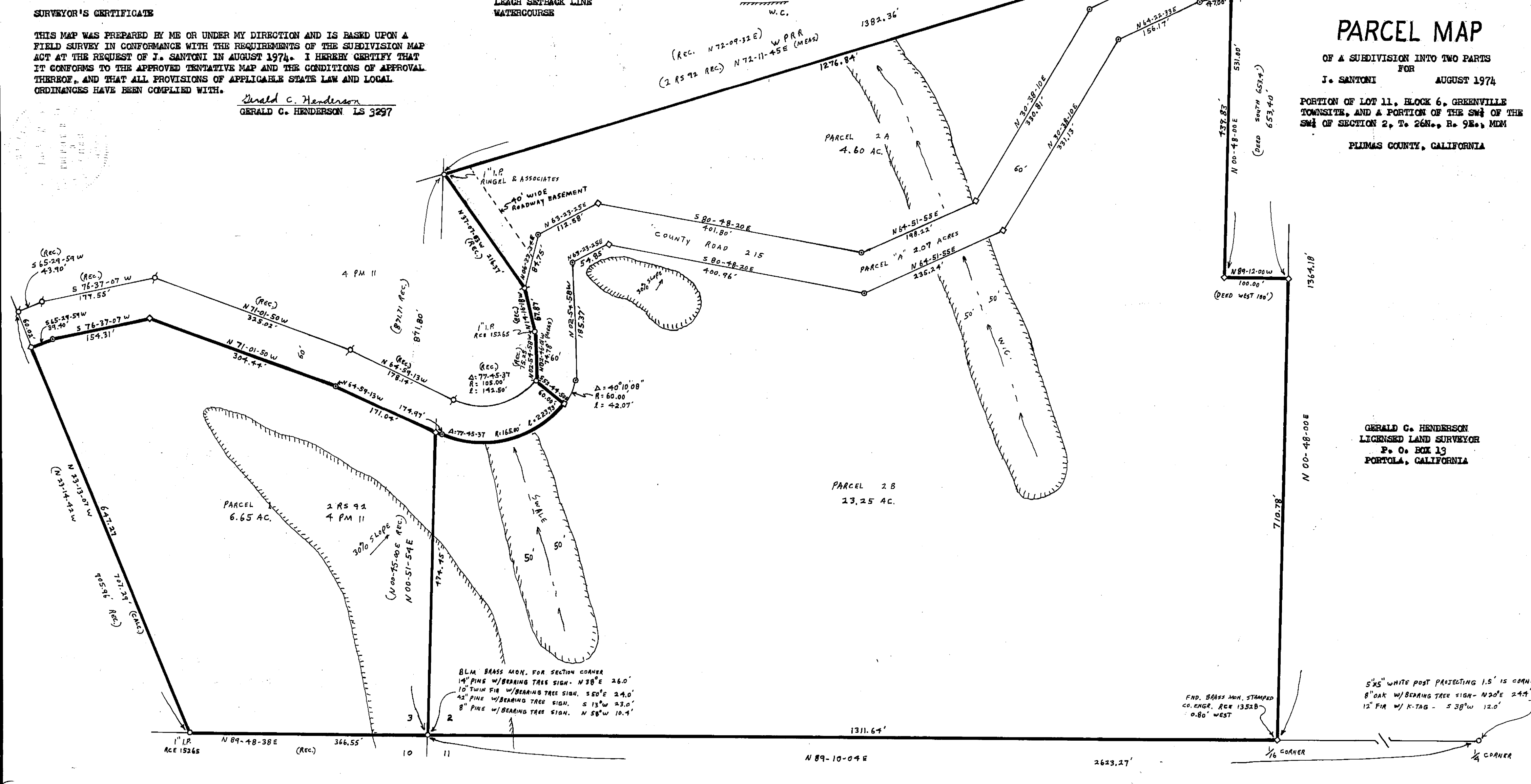
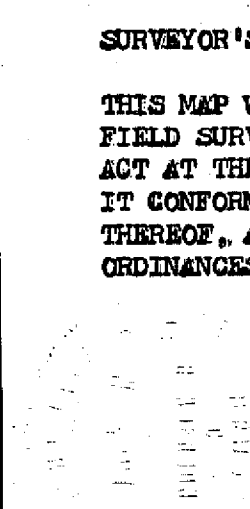
PARCEL MAP

OF A SUBDIVISION INTO TWO PARTS  
FOR  
J. SANTONI  
AUGUST 1974

PORTION OF LOT 11, BLOCK 6, GREENVILLE TOWNSHIP, AND A PORTION OF THE SW 1/4 OF THE SW 1/4 OF SECTION 2, T. 26N., R. 9E., MDM

PLUMAS COUNTY, CALIFORNIA

GERALD C. HENDERSON  
LICENSED LAND SURVEYOR  
P. O. BOX 13  
PORTOLA, CALIFORNIA



4/10/115