

SURVEYOR'S CERTIFICATE

THIS MAP WAS PREPARED BY ME OR UNDER MY DIRECTION AND WAS COMPILED FROM RECORD DATA AND IS BASED UPON A FIELD SURVEY IN CONFORMANCE WITH THE REQUIREMENTS OF THE SUBDIVISION MAP ACT AT THE REQUEST OF LOUISIANA PACIFIC CORPORATION ON APRIL, 1974. I HEARBY CERTIFY THAT IT CONFORMS TO THE APPROVED TENTATIVE MAP AND THE CONDITIONS OF APPROVAL THEREOF; THAT ALL PROVISIONS OF APPLICABLE STATE LAW HAVE BEEN COMPLIED WITH.

Dan J. Cook
DAN J. COOK R.C.E. 13062

COUNTY SURVEYOR'S CERTIFICATE

THIS MAP HAS BEEN EXAMINED THIS 27th DAY OF August, 1974, FOR CONFORMANCE WITH THE REQUIREMENTS OF SECTION 11575 OF THE SUBDIVISION MAP ACT.

Larry A. Fites
LARRY A. FITES R.C.E. 13225
PLUMAS COUNTY SURVEYOR

RECORDER'S CERTIFICATE

FILED THIS 27th DAY OF August, 1974, AT 11:50 AM. IN BOOK 4 OF PARCEL MAPS AT PAGE 100 AT THE REQUEST OF COOK ASSOCIATES.

FEE \$ 5.00

Dorothy Mae Marley
DOROTHY MAE MARLEY
COUNTY RECORDER

SERIAL NO. 3000

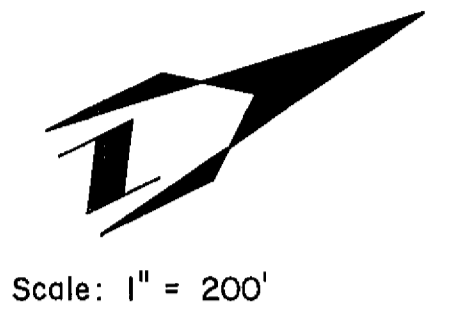
by deputy *Charles Richard Pomeroy*

LANDS OF LOUISIANA PACIFIC PARCEL MAP

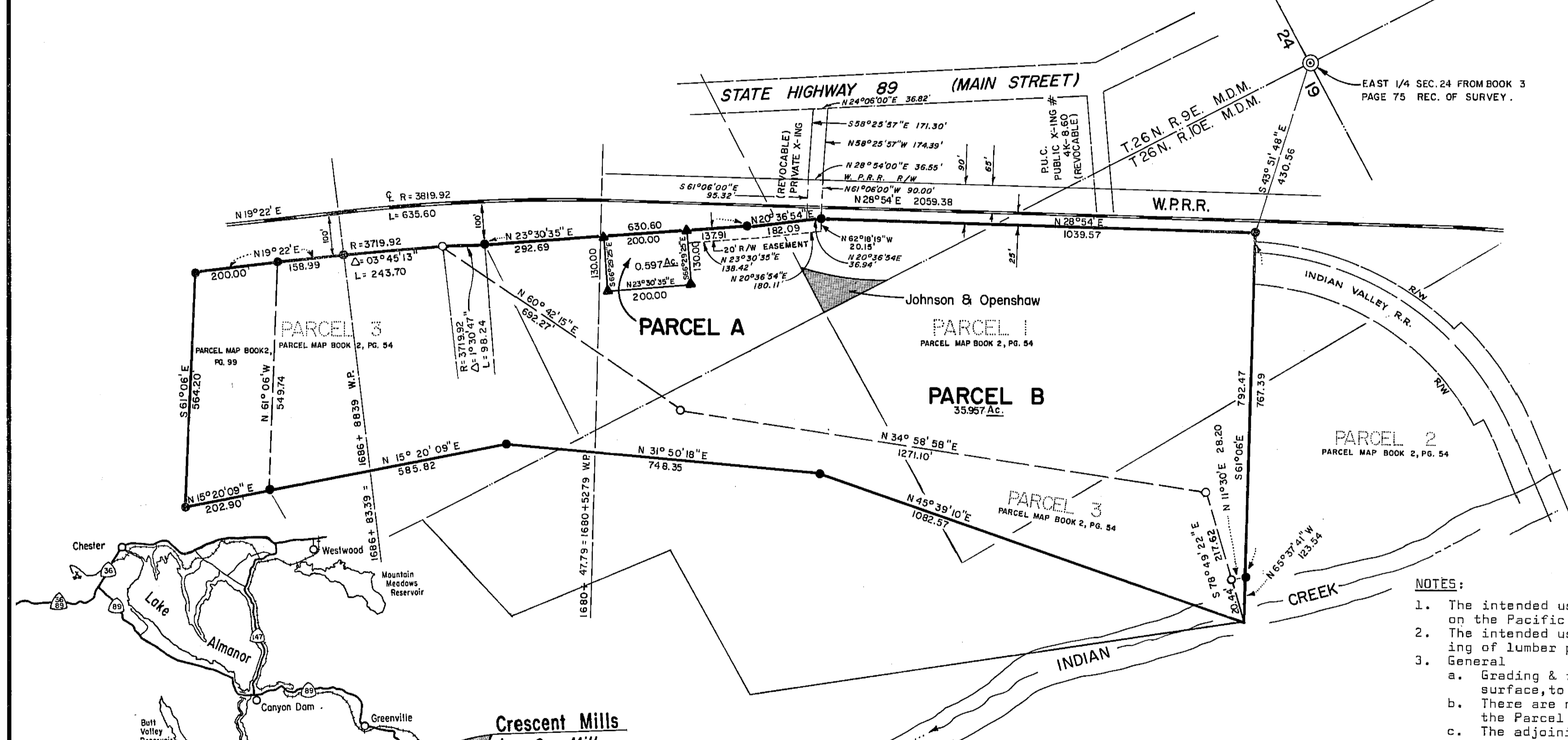
PORTION OF S.E. 1/4 OF SEC. 24, T.26 N. R.9E M.D.M. PLUMAS COUNTY, CALIF.

LEGEND:

- FOUND 1-1/2" x 18" IRON PIPE TAGGED L.S. 2702
- FOUND 3/4" IRON PIPE TAGGED R.C.E. 7294
- ▲ SET 3/4" IRON PIPE TAGGED R.C.E. 13062
- BASIS OF BEARING IS THE EXISTING \bar{C} OF W.P.R.R.



CRESCENT MILLS



NOTES:

1. The intended use of Parcel "A" is for an electrical substation on the Pacific Gas & Electric system.
2. The intended use of Parcel "B" is for the refinement and manufacturing of lumber products by the Louisiana Pacific Corporation.
3. General
 - a. Grading & filling for the L.P. Mill has developed a leveled surface, to grade.
 - b. There are no wells, springs or sewage disposal facilities on the Parcel "A" or adjacent thereto.
 - c. The adjoining land use consists of general commercial to the west of the W.P.R.R. track; manufacturing to the north; open meadow land to the east and golf course to the south.
 - d. The entire parcel is above the Indian Creek flood plain and no changes in the surface flow pattern will result.
 - e. There are no wells or sewage facilities required on Parcel "A". A well, a septic drain field will be constructed on Parcel "B".
 - f. A majority of the surface of Parcel "A" will be paved. Approximately 15% of Parcel "B" will be paved.

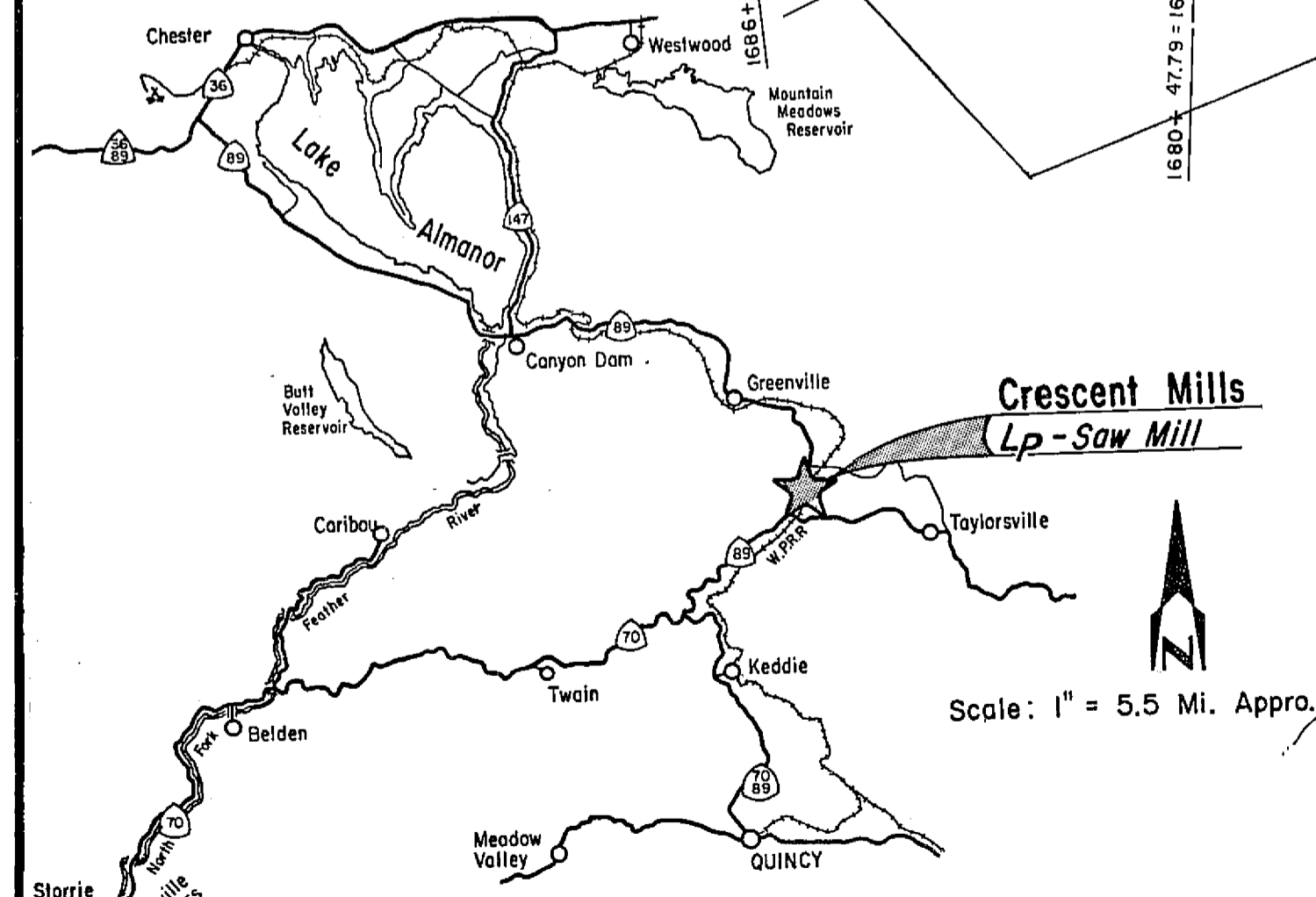
TAX COLLECTOR'S CERTIFICATE

I, THE UNDERSIGNED COUNTY TAX COLLECTOR OF THE COUNTY OF PLUMAS, STATE OF CALIFORNIA, DO HEREBY CERTIFY THAT THERE ARE NO TAX LIENS AGAINST PARCELS A & B AS SHOWN HEREON, OR UNPAID STATE, COUNTY, MUNICIPAL OR LOCAL TAXES OR SPECIAL ASSESSMENTS COLLECTED AS TAXES, EXCEPT TAXES OR ASSESSMENTS NOT YET PAYABLE. TAXES OR ASSESSMENTS WHICH ARE A LIEN BUT NOT YET PAYABLE, ARE ESTIMATED TO BE IN THE AMOUNT OF \$ 23,030.00

Douglas S. Redstreake
DOUGLAS S. REDSTREAKE, PLUMAS COUNTY TAX COLLECTOR

COOK ASSOCIATES
ENGINEERING CONSULTANTS
2080 PARK AVENUE
OROVILLE, CALIFORNIA 95965

LOCATION MAP



Scale: 1" = 5.5 Mi. Appro.