

For road and utility easement to Mohawk-Chapman Road see O.R. 209-776, O.R. 209-778, O.R. 209-780

60' ROAD EASEMENT

1	S65°18'35"E	260.95'	13	S48°47'50"W	170.58'
2	N79°16'10"E	119.09'	14	S64°09'45"W	84.34'
3	S74°29'40"E	125.79'	15	N85°49'50"W	217.24'
4	N77°12'20"E	99.84'	16	S40°51'00"E	77.34'
5	N84°58'10"E	85.17'	17	S76°58'00"E	116.48'
6	N60°54'25"E	284.25'	18	S58°34'15"E	79.38'
7	S35°32'20"E	169.27'	19	N84°04'00"E	142.87'
8	S56°56'40"E	57.00'	20	S42°54'00"E	290.57'
9	N81°20'10"E	194.84'	21	S66°42'05"W	84.59'
10	N85°47'25"E	185.43'	22	S11°07'30"E	342.33'
11	S20°56'25"E	160.51'	23	S16°30'00"E	55.30'
12	S86°42'25"W	250.54'			

NOTES

1. Tentative parcel map approved by Plumas County Planning Commission Feb. 26, 1973.
2. See Record of Survey, Bk. 4, p. 8 for additional data on boundary.

COUNTY TAX COLLECTOR'S CERTIFICATE

I, the undersigned, County Tax Collector of the County of Plumas, State of California, do hereby certify that there are no tax liens against Parcels 1, 2, 3 and 4 as shown hereon or unpaid state, county, municipal, or local taxes, or spl. assessments collected as taxes, except taxes or assessments not yet payable. Taxes or assessments which are a lien but not yet payable, are estimated to be in the amount of \$322.99.

*Douglas S. Radstake*  
 Douglas S. Radstake  
 Plumas Co. Tax Collector

COUNTY SURVEYOR'S CERTIFICATE

This map has been examined this 23<sup>rd</sup> day of August, 1974, for conformance with the requirements of Section 11575 of the Subdivision Map Act.

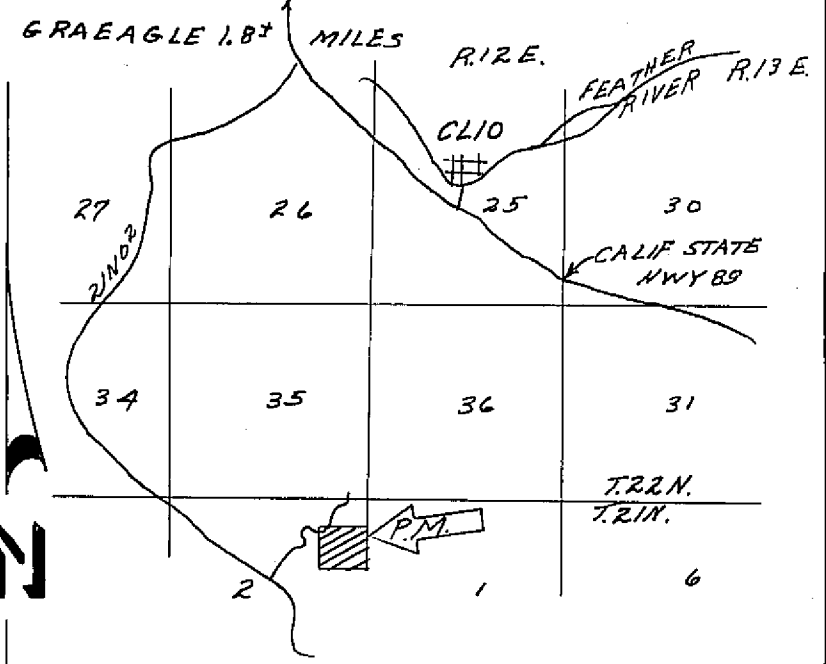
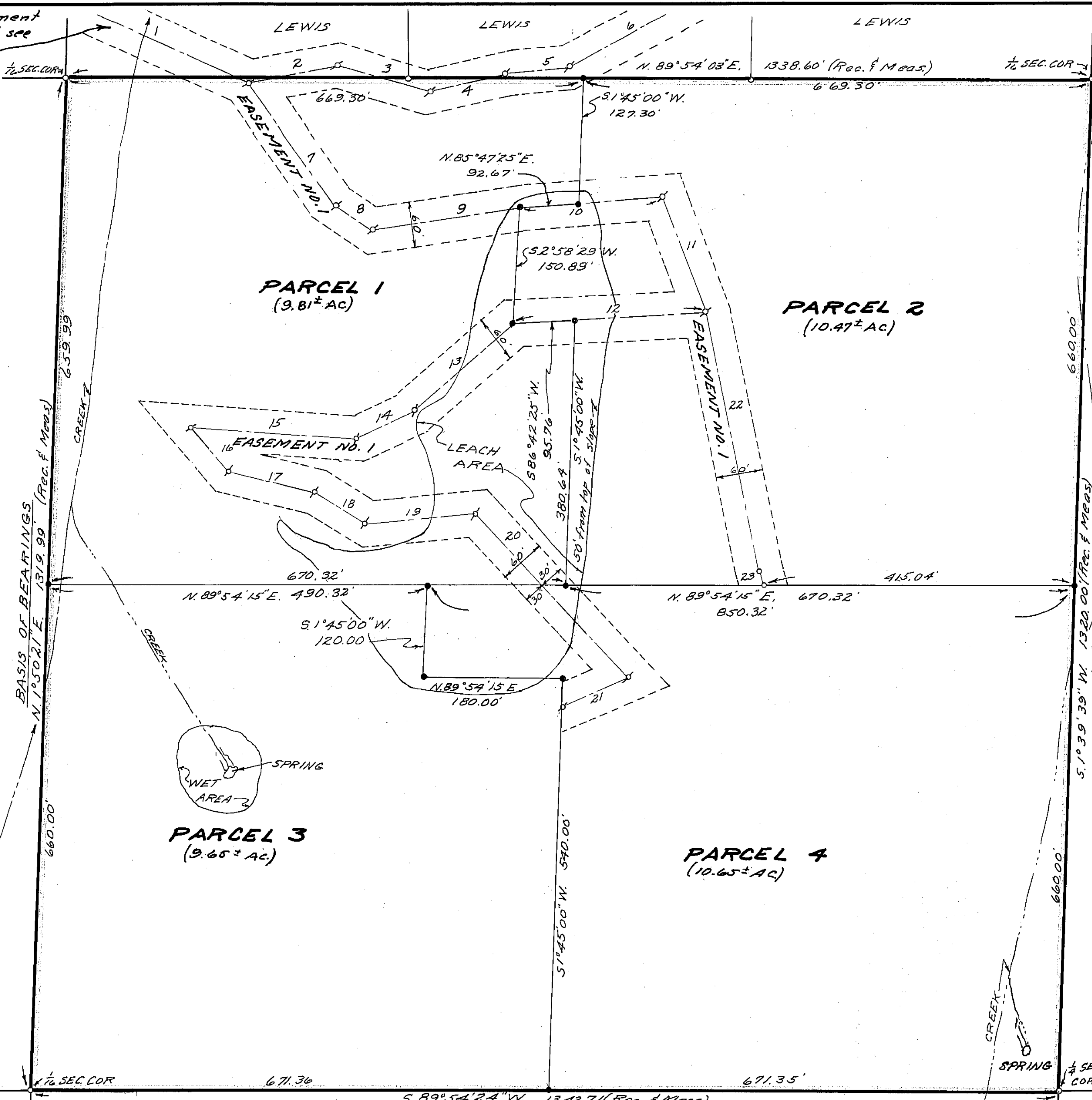
*Larry A. Fites*  
 Larry A. Fites, R.C.E. 13225  
 Plumas Co. Surveyor

PLUMAS COUNTY RECORDER'S CERTIFICATE

Filed this 26<sup>th</sup> day of August, 1974, at 9:55 A.M. in Book 4 of Parcel Maps at page 92 at the request of John C. Simpson.

*Donna New Masley*  
 Donna New Masley  
 Plumas County Recorder

Fee \$5.00  
 File No. 1356



LOCATION MAP NO SCALE

LEGEND

- Found 1/2" Steel Pin and plastic cap, R.C.E. 11173 (See R/S, Bk. 4, p. 8)
- Set 1/2" Steel Pin with plastic cap stamped R.C.E. 11173
- Survey point - no permanent monument set
- Rec. Record (from deed, record map, etc.)
- Meas. Measured
- Ac. Acre
- R/S Record of Survey
- O.R. Official Records, Plumas Co.
- Bk. Book
- P. Page
- R.C.E. Registered Civil Engineer

SCALE 1"=100'

EASEMENT NO. 1 to be established by separate document, recorded concurrently with the filing of this map, as a non-exclusive easement for roadway, drainage, utilities and incidental purposes for the benefit of Parcels 1, 2, 3 and 4 hereon.

SURVEYOR'S CERTIFICATE

This map was prepared by me or under my direction (and is based upon a field survey) in conformance with the subdivision Map Act at the request of Richard F. Johnson, August 8, 1974. I hereby certify that it conforms to the approved tentative map and the conditions of approval thereof; that all provisions of applicable state law and local ordinances have been complied with.

*John C. Simpson*  
 John C. Simpson  
 R.C.E. 11173



PARCEL MAP OF SUBDIVISION OF FOUR PARCELS

FOR RICHARD F. AND GRENELL JOHNSON RECORD OWNERS

WITHIN THE SE 1/4 NE 1/4 SEC. 2, T. 21 N., R. 12 E., M.D.M. PLUMAS COUNTY, CALIFORNIA

JOHN C. SIMPSON, P.E.  
 CIVIL ENGINEER  
 P.O. BOX 719  
 QUINCY CALIFORNIA

SE 1/4 NE 1/4 SEC. 2, T. 21 N., R. 12 E., M.D.M.  
 HI VALLEY INC.  
 SEE RECORD OF SURVEY BK. 4-88