

**ROAD EASEMENT**

1	S5°18'30"W	76.99	12	N73°00'40"W	157.52
2	S39°34'00"E	165.79	13	N48°38'20"W	197.91
3	S32°10'20"E	142.85	14	N57°34'20"W	132.56
4	S26°23'30"E	184.55	15	S66°26'20"W	149.39
5	NW17°30"E	346.24	16	S55°03'00"W	198.59
6	S76°11'00"E	74.62	17	S67°50'15"W	238.06
7	S28°21'20"E	175.04	18	S85°32'10"W	146.85
8	S26°45'20"W	123.15	19	S59°34'50"E	142.29
9	S42°41'00"E	137.84	20	S59°34'50"E	331.22
10	S52°58'00"E	126.58	21	S28°32'10"E	197.55
11	S26°09'25"W	86.64	22	S5°38'40"E	205.03

**NOTES**

1. Tentative Parcel Map approved by Plumas County Planning Commission Feb. 26, 1973.
2. See Record of Survey Bk. 4, page 8 for additional data on boundary.

**COUNTY TAX COLLECTOR'S CERTIFICATE**

I, the undersigned, County Tax Collector of the County of Plumas, State of California, do hereby certify that there are no tax liens against Parcels 1, 2, 3 and 4 as shown hereon or unpaid state, county, municipal, or local taxes, or spl. assessments collected as taxes, except taxes or assessments not yet payable. Taxes or assessments which are a lien but not yet payable, are estimated to be in the amount of \$322.50.

*Douglas S. Redstreake*  
Douglas S. Redstreake  
Plumas County Tax Collector

**COUNTY SURVEYOR'S CERTIFICATE**

This map has been examined this 23<sup>rd</sup> day of August, 1974, for conformance with the requirements of Section 11575 of the Subdivision Map Act.

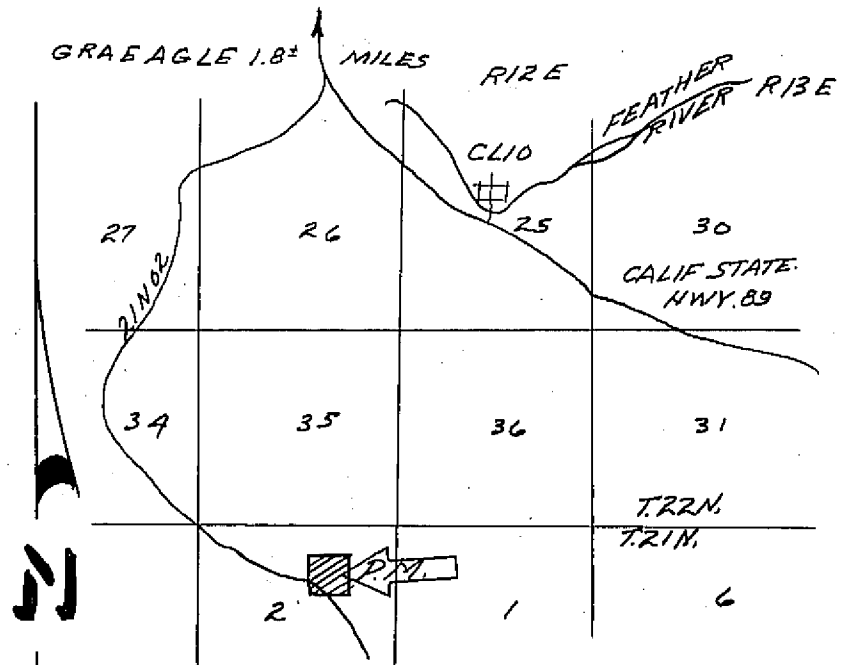
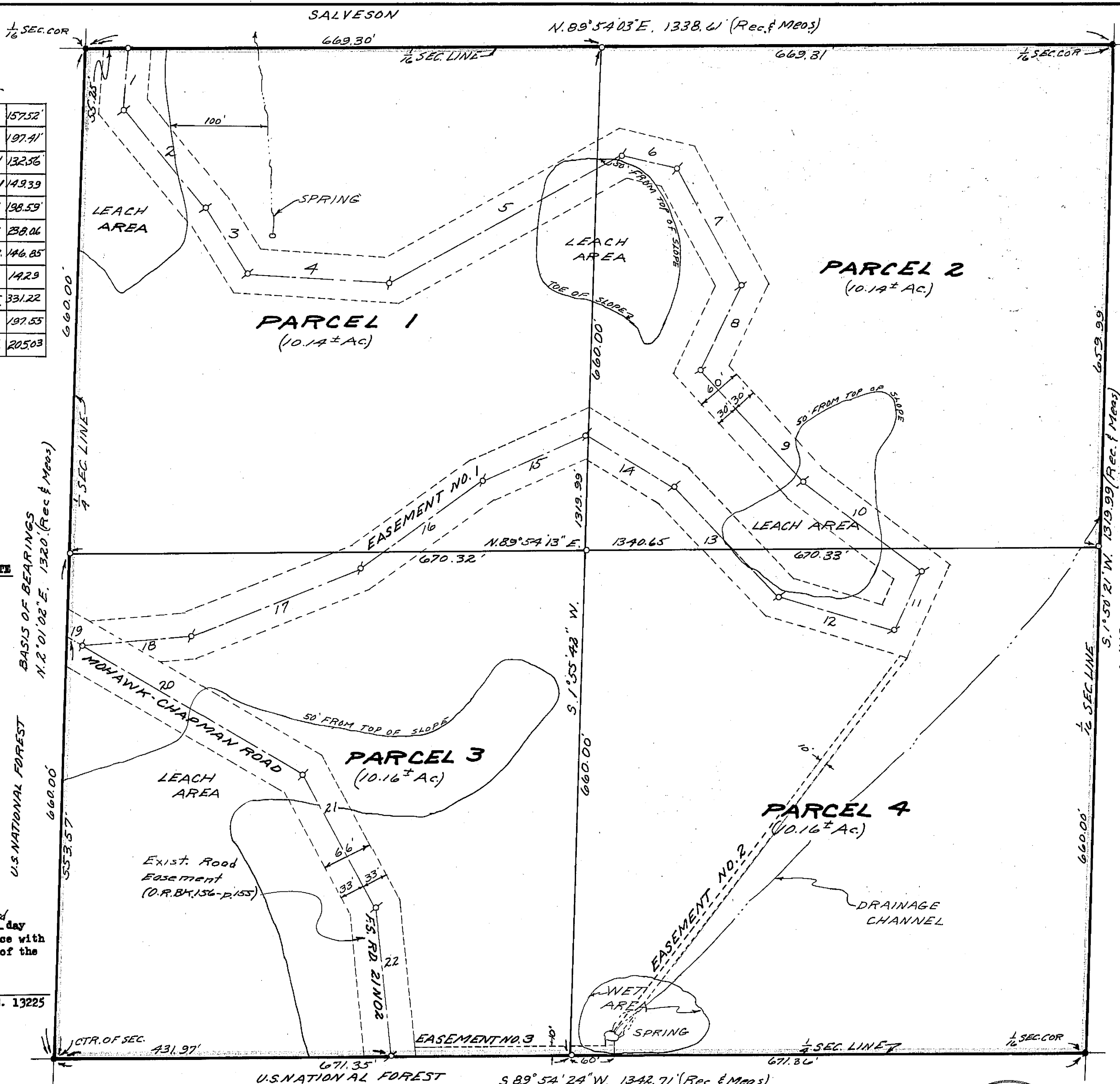
*Larry A. Fites*  
Larry A. Fites, R. C. E. 13225  
Plumas County Surveyor

**RECORDER'S CERTIFICATE**

Filed this 26<sup>th</sup> day of August, 1974, at 9:50 A.M. in Book 4 of Parcel Maps at Page 2 at the request of John C. Simpson.

*Dorothy New Masler*  
Plumas County Recorder

Fee \$5.00  
File No. 1153



**LOCATION MAP**  
NO SCALE

**LEGEND**

- Found 1/2" Steel Pin and plastic cap, R.C.E. 11173 (See R/S, Bk. 4, p. 8)
- Set 1/2" Steel Pin with plastic cap stamped R.C.E. 11173
- ⊕ Survey point - no permanent monument set
- Rec. Record (from deed, record map, etc.)
- Meas. Measured
- F.S. Forest Service
- Ac. Acre
- R/S Record of Survey
- O.R. Official Records, Plumas Co. records
- Bk. Book
- P. Page
- R.C.E. Registered Civil Engineer

SCALE 1"=100'

**EASEMENT NO. 1** to be established by separate document, recorded concurrently with the filing of this map, as a non-exclusive easement for roadway, drainage, utilities and incidental purposes for the benefit of Parcels 1, 2, 3 and 4 hereon.

**EASEMENT NO. 2** to be established by separate document, recorded concurrently with the filing of this map, as a non-exclusive easement for a water pipe line and appurtenances for the benefit of Parcels 1 and 2 hereon.

**EASEMENT NO. 3** to be established by separate document, recorded concurrently with the filing of this map, as a non-exclusive easement for a water pipe line and appurtenances for the benefit of Parcels 1 and 3 hereon.

**SURVEYOR'S CERTIFICATE**

This map was prepared by me or under my direction (and is based upon a field survey) in conformance with the subdivision Map Act at the request of Lynn B. Welch, Aug. 8, 1974. I hereby certify that it conforms to the approved tentative map and the conditions of approval thereof; that all provisions of applicable state law and local ordinances have been complied with.

*John C. Simpson*  
John C. Simpson  
R.C.E. 11173



JOHN C. SIMPSON, P.E.  
CIVIL ENGINEER  
P.O. BOX 719  
QUINCY, CALIFORNIA

**PARCEL MAP**  
OF  
**SUBDIVISION OF FOUR PARCELS**

FOR  
**LYNN B. AND MARY L. WELCH**  
RECORD OWNERS

WITHIN THE SW 1/4 NE 1/4 SEC. 2, T. 21 N., R. 12 E., M.D.M.  
PLUMAS COUNTY, CALIFORNIA

4/PM 98