

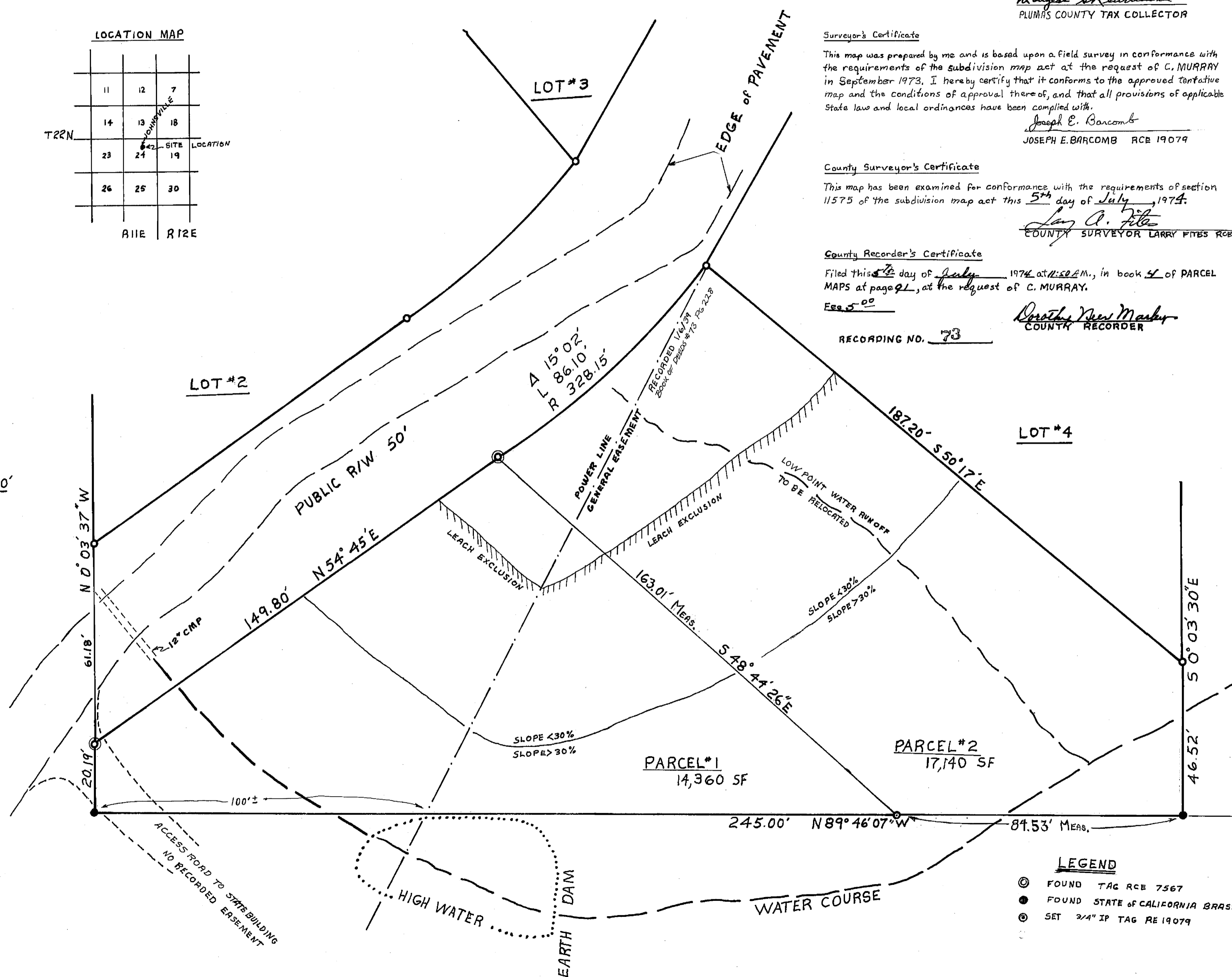
LOCATION MAP

11	12	7
14	13	18
23	24	19
26	25	30

T22N
R11E R12E



SCALE 1"=20'



Tax Collector's Certificate

I, the undersigned County Tax Collector of the County of Plumas, State of California, do hereby certify that there are no tax liens against PARCELS 1+2 shown hereon, or unpaid state, county, municipal, or local taxes, or special assessments collected as taxes, except taxes or assessments not yet payable. Taxes or assessments which are a lien but not yet payable are estimated to be in the amount of \$160.00

Joseph E. Barcomb
PLUMAS COUNTY TAX COLLECTOR

Surveyor's Certificate

This map was prepared by me and is based upon a field survey in conformance with the requirements of the subdivision map act at the request of C. MURRAY in September 1973. I hereby certify that it conforms to the approved tentative map and the conditions of approval thereof, and that all provisions of applicable State law and local ordinances have been complied with.

Joseph E. Barcomb
JOSEPH E. BARCOMB RCE 19079

County Surveyor's Certificate

This map has been examined for conformance with the requirements of section 11575 of the subdivision map act this 5th day of July, 1974.

Larry A. Fites
COUNTY SURVEYOR LARRY FITES RCE 13225

County Recorder's Certificate

Filed this 5th day of July, 1974 at 1:50 P.M., in book 4 of PARCEL MAPS at page 91, at the request of C. MURRAY.

Corothy New Marker
COUNTY RECORDER

RECORDING NO. 73

PARCEL MAP

of a subdivision into two parts
for
C. Murray - February 1974
portion of section 24, T22N, R11E., M.D.M.
lot 1 in book 3 of Maps at page 34
PLUMAS COUNTY
CALIF

Joseph E. Barcomb, RCE 19079
P.O. Box 38
Quincy, Calif. 95971

LEGEND

- ⊙ FOUND TAG RCE 7567
- ⊙ FOUND STATE OF CALIFORNIA BRASS CAP
- ⊙ SET 3/4" IP TAG RE 19079

NOTE: Basis of bearing (defined by two State of California brass monuments) is taken from the East-West line, which forms the Southern property line of lot #1, that is shown on a certain map filed in BOOK 3, PAGE 34, BOOK OF MAPS, PLUMAS COUNTY RECORDS.

40191