

SURVEYOR'S CERTIFICATE

THIS MAP WAS PREPARED BY ME OR UNDER MY DIRECTION BASED UPON A FIELD SURVEY IN CONFORMANCE WITH THE SUBDIVISION MAP ACT AT THE REQUEST OF THE GRAEAGLE LAND AND WATER COMPANY, APRIL 1, 1974. I HEREBY CERTIFY THAT IT CONFORMS TO THE APPROVED TENTATIVE PARCEL MAP AND THE CONDITIONS OF APPROVAL THEREOF; THAT ALL PROVISIONS OF APPLICABLE STATE LAW AND LOCAL ORDINANCES HAVE BEEN COMPLIED WITH.

*Richard A. Lundy*  
RICHARD A. LUNDY  
R.C.E. 15265

COUNTY TAX COLLECTOR'S CERTIFICATE

I, THE UNDERSIGNED, COUNTY TAX COLLECTOR OF THE COUNTY OF PLUMAS, STATE OF CALIFORNIA, DO HEREBY CERTIFY THAT THERE ARE NO TAX LIENS AGAINST PARCELS 3A, 3B, 6A, OR 6B AS SHOWN HEREON, OR UNPAID STATE, COUNTY MUNICIPAL, OR LOCAL TAXES, OR SPECIAL ASSESSMENTS COLLECTED AS TAXES, EXCEPT TAXES OR ASSESSMENTS NOT YET PAYABLE. TAXES OR ASSESSMENTS WHICH ARE A LIEN BUT NOT YET PAYABLE ARE ESTIMATED TO BE IN THE AMOUNT OF \$124.90.

*Douglas S. Redstreak*  
DOUGLAS S. REDSTREAK  
PLUMAS COUNTY TAX COLLECTOR

RECORDER'S CERTIFICATE

FILED THIS 21 DAY OF May, 1974, AT 2:15 P.M. IN BOOK 4 OF PARCEL MAPS AT PAGE 85 AT THE REQUEST OF RICHARD A. LUNDY.

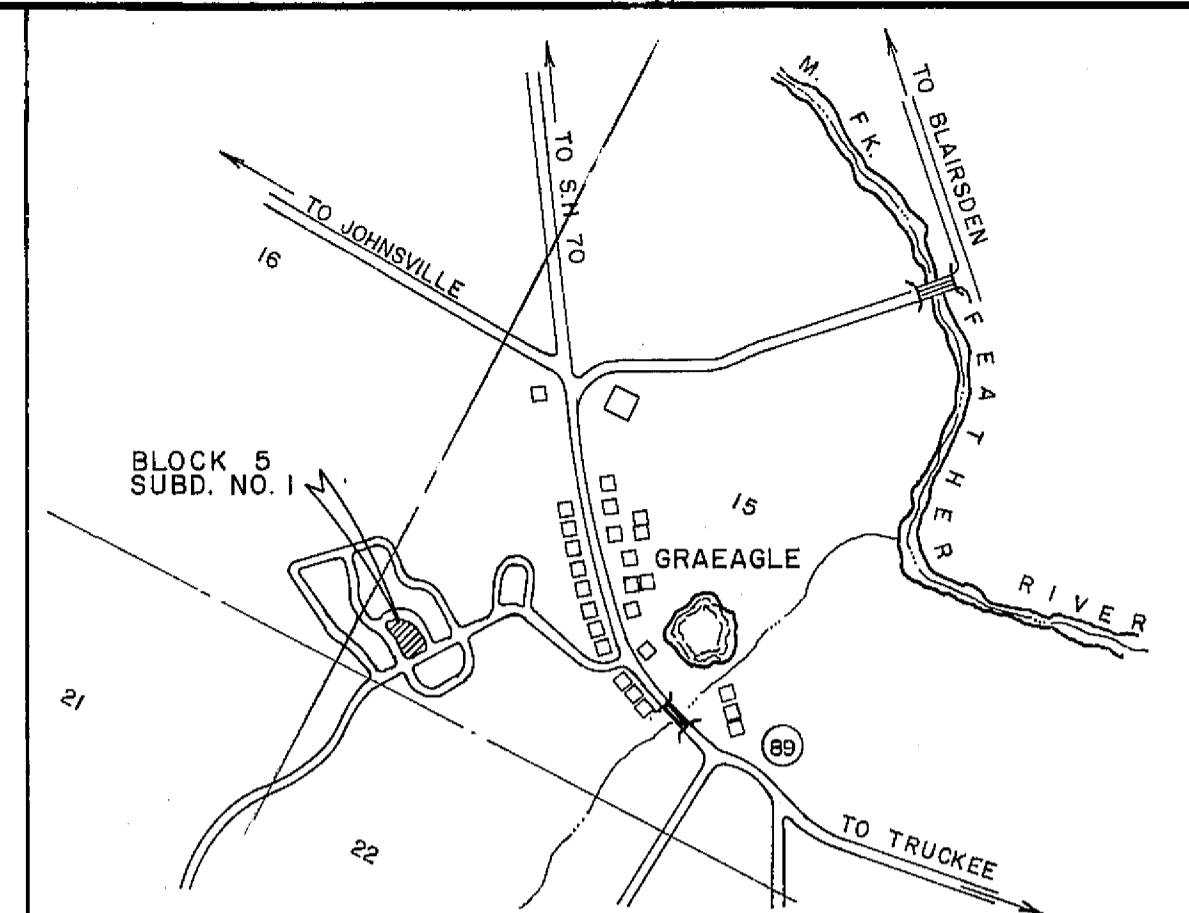
*Deputy Recorder*  
PLUMAS COUNTY RECORDER

FILE NO. 5493  
FEE \$5.00

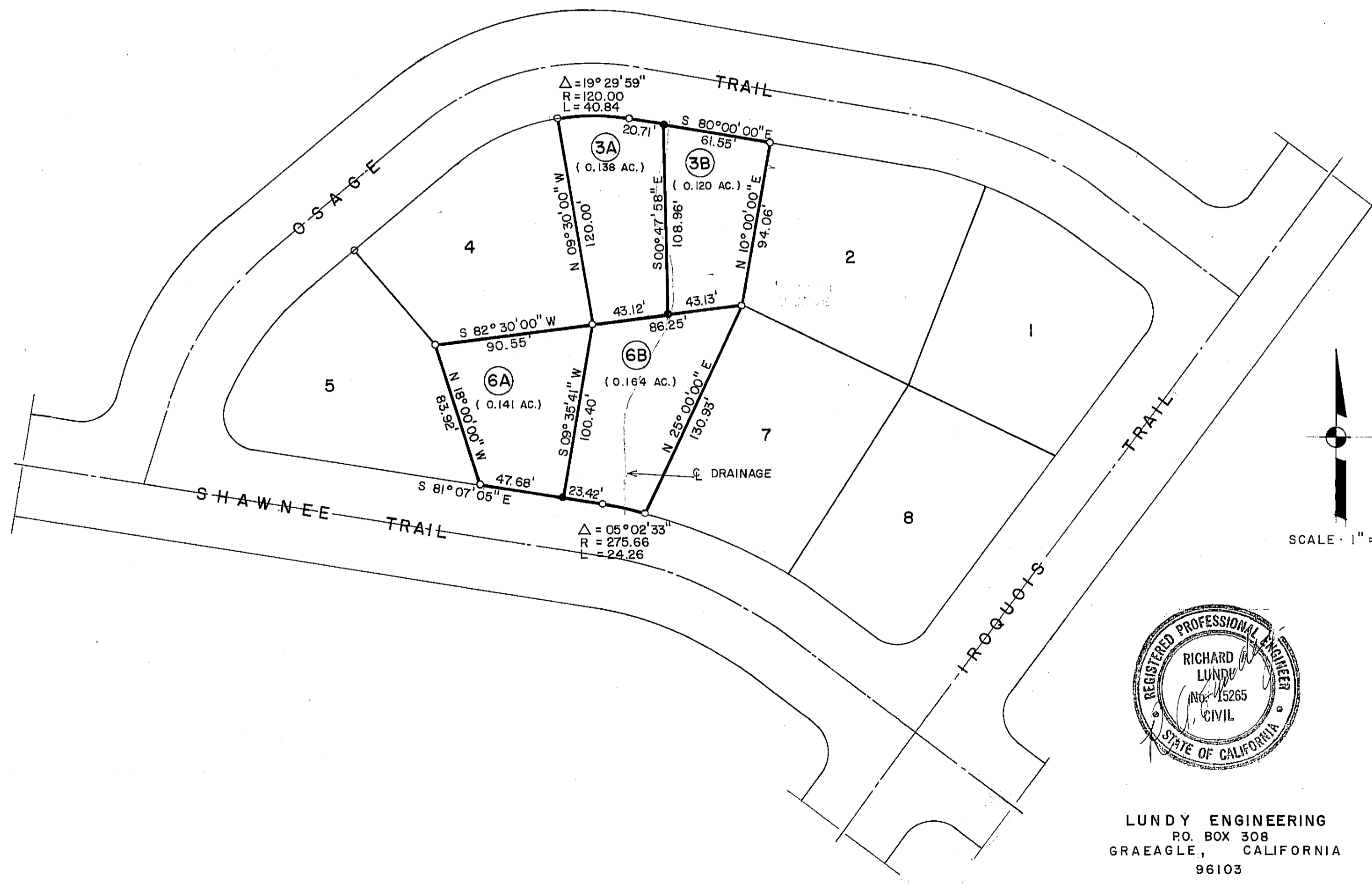
COUNTY SURVEYOR'S CERTIFICATE

THIS MAP HAS BEEN EXAMINED THIS 20th DAY OF May 1974, FOR CONFORMANCE WITH THE REQUIREMENTS OF SECTION 11575 OF THE SUBDIVISION MAP ACT.

*John D. Fite*  
PLUMAS COUNTY SURVEYOR



LOCATION PLAN — NO SCALE



BASIS OF BEARING

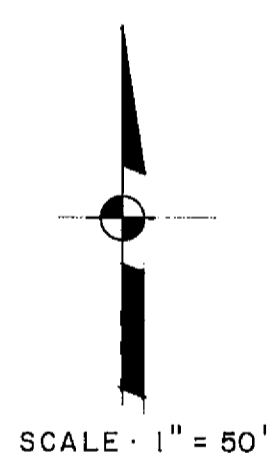
WITHIN THE SW 1/4, SEC. 15, T. 22 N., R. 12 E., M.D.M. BEING LOTS 3 AND 6, BLOCK 5, GRAEAGLE SUBDIVISION NO. 1. BOOK 2 OF MAPS, PAGES 16 & 17.

NOTE:

- 1. TENTATIVE PARCEL MAP APPROVED BY PLUMAS COUNTY PLANNING COMMISSION MARCH 25, 1974.
- 2. A CONDITION OF PLANNING COMMISSION APPROVAL IS THAT NO HABITABLE STRUCTURES BE CONSTRUCTED ON PARCELS SHOWN. THESE PARCELS ARE TO BE AGGREGATED TO EXISTING ADJACENT PARCELS.

LEGEND

- o FOUND 1" G.I. PIN.
- SET 1" G.I. PIN.
- R.C.E. REGISTER CIVIL ENGINEER



LUNDY ENGINEERING  
P.O. BOX 308  
GRAEAGLE, CALIFORNIA  
96103

PARCEL MAP  
OF  
SUBDIVISION OF TWO PARCELS  
FOR

GRAEAGLE LAND & WATER CO.  
RECORD OWNER

WITHIN THE SW 1/4, SEC. 15, T. 22 N., R. 12 E., M.D.M.  
PLUMAS COUNTY, CALIFORNIA