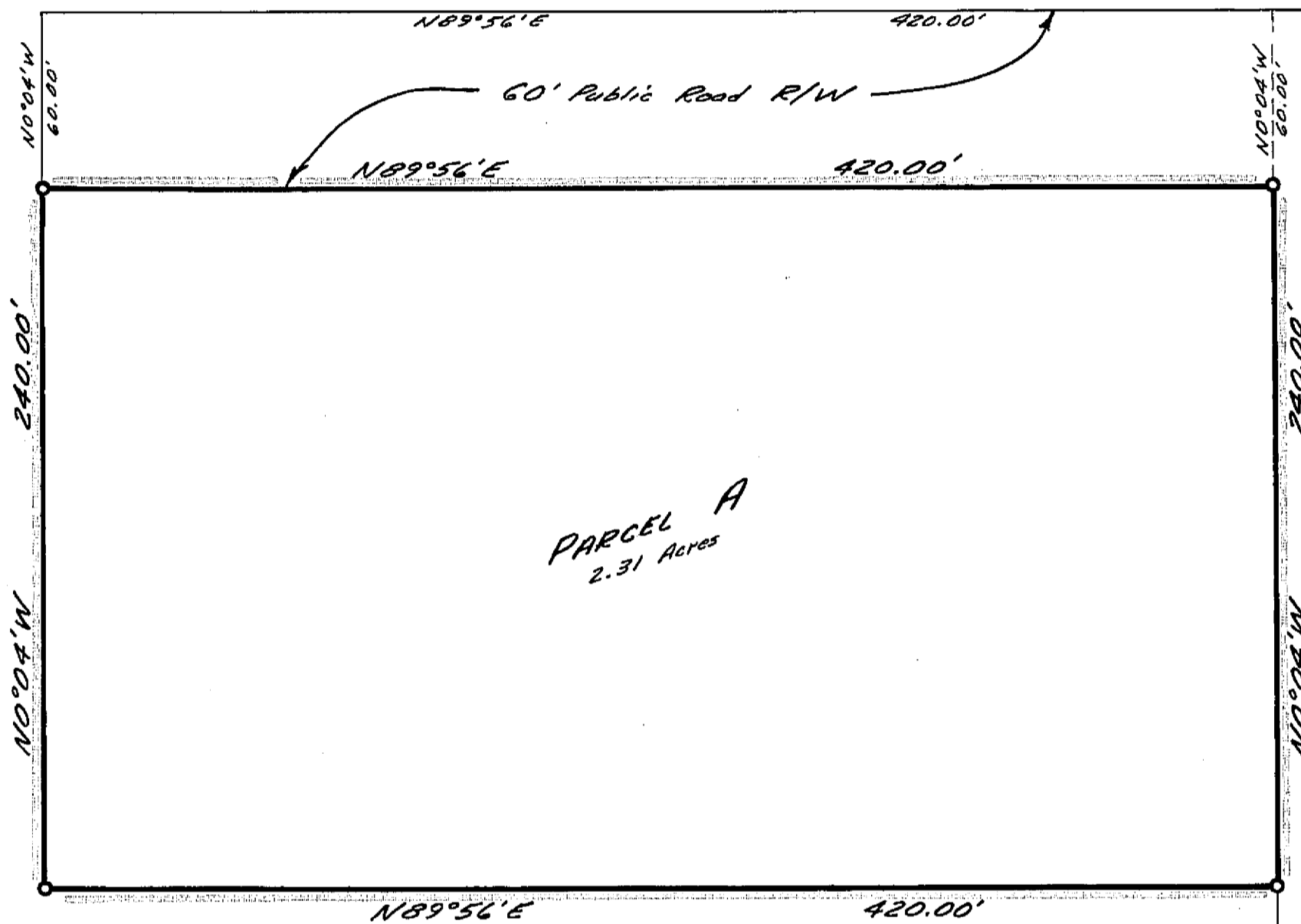


OTHER LANDS OF THE WESTERN PACIFIC RAILROAD COMPANY



PARCEL A  
2.31 Acres

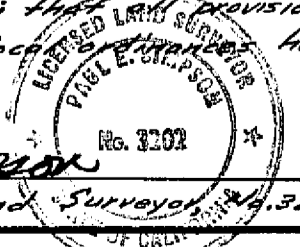
I, the undersigned, County Tax Collector of the County of Plumas, State of California, do hereby certify that there are no tax liens against Parcel A, as shown hereon, or unpaid state, county, municipal, or local taxes, or special assessments collected as taxes, except taxes or assessments not yet payable. Taxes or assessments which are a lien but not yet payable are estimated to be in the amount of \_\_\_\_\_.

Douglas S. Redstreako, Plumas County Tax Collector

CERTIFICATES:

This map was prepared by me or under my direction, and was compiled from a field survey in conformance with the requirements of the Subdivision Map Act at the request of The Western Pacific Railroad Co. in Oct., 1973. I hereby certify that it conforms to the approved tentative map and the conditions of approval thereof; that all provisions of applicable state laws and local ordinances have been complied with.

Paul E. Simpson  
Paul E. Simpson, Licensed Land Surveyor, No. 3202



This map has been examined this 1st day of March, 1974, for conformance with the requirements of Section 11575 of the Subdivision Map Act.

Richard A. Sypher  
Richard A. Sypher, R.C.E. 10237, Portola City Engineer

Approved for recording by the Planning Commission of the City of Portola.

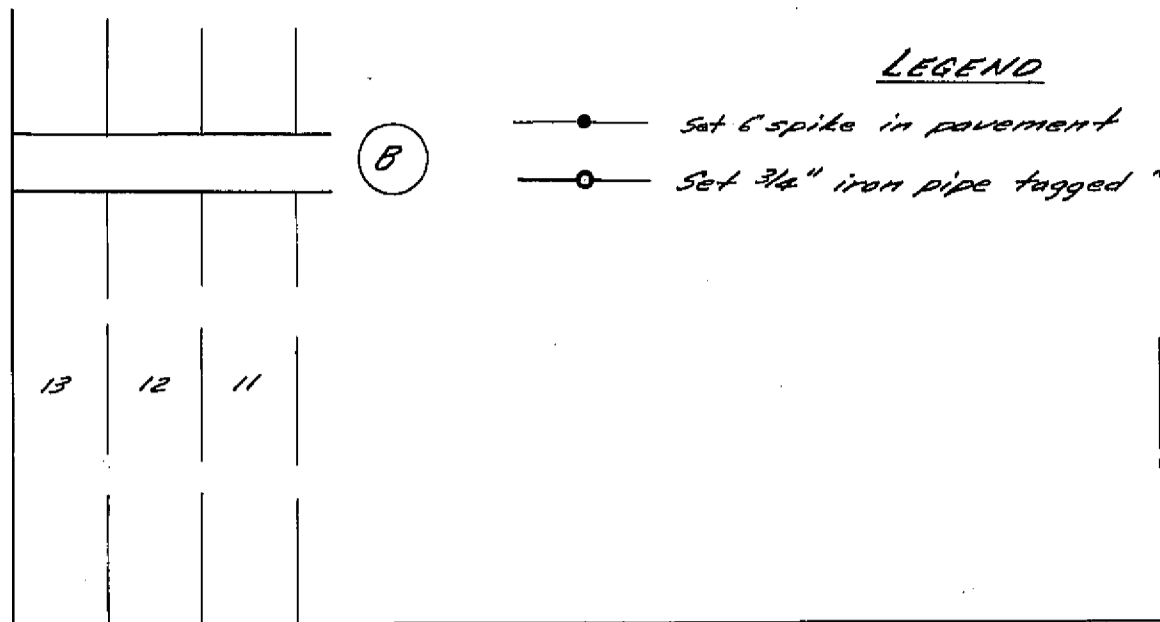
J.A. Reichen  
Chairman  
Date 3/1/74

Filed for record this 1st day of March, 1974 at 4:50 P.M. in Book 4 of Parcel Maps at page 19 at the request of Paul E. Simpson.  
Fee \$5.00 File No. 4493

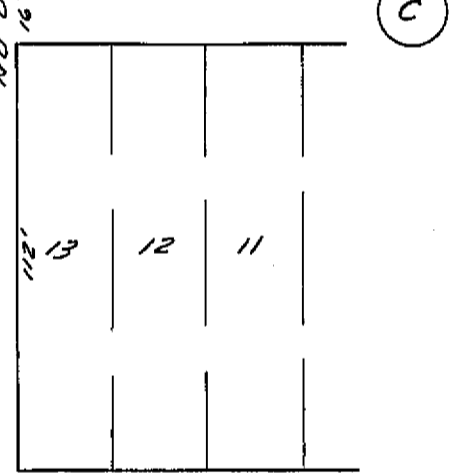
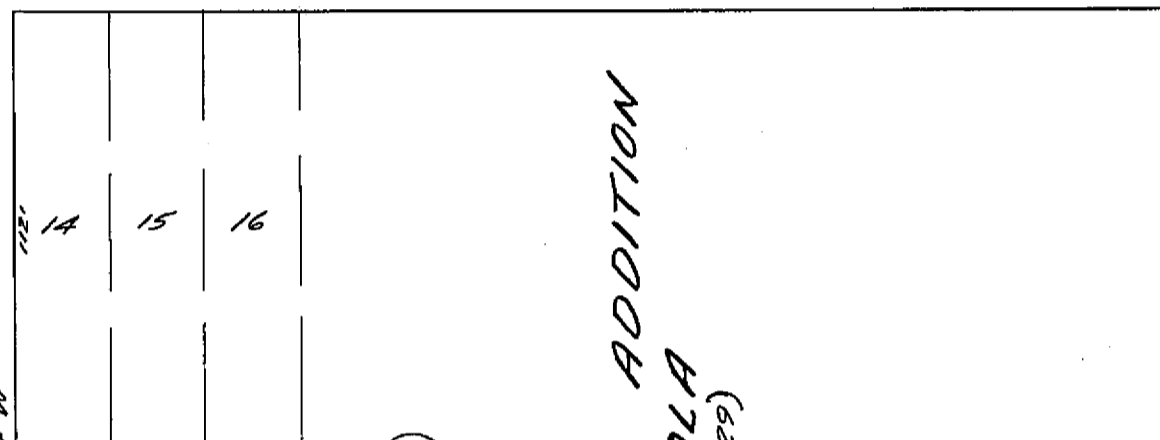
Dorothy Neer Marley  
Dorothy Neer Marley, Plumas County Recorder

LEGEND

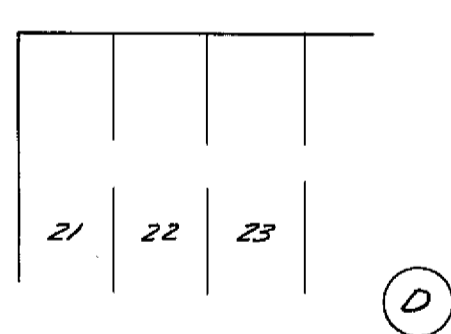
- Set 6" spike in pavement
- Set 3/4" iron pipe tagged "L.S. 3202"



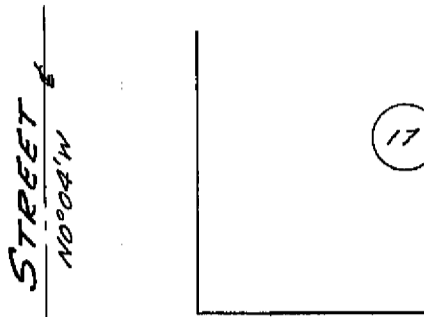
SECOND AVENUE  
N89°56'E 340.00'  
(Basis of Bearings)  
(See Note)



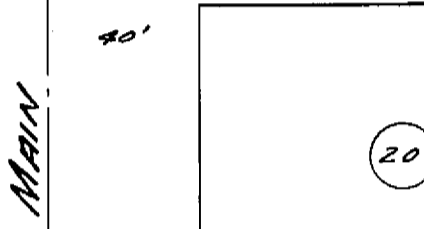
THIRD AVENUE



WESTERN PACIFIC ADDITION  
TO PORTOLA  
(Bk. A of Maps P. 22)



MAIN STREET  
N89°56'E 295.00'  
To a spike set at the intersection of Second Ave. & Pacific St.  
(See Note)



**SURVEYOR'S NOTE:**  
As no surveys of record indicating monumentation of this area could be found, the centerlines of Main Street, Pacific Street, First Avenue, Second Avenue, and Third Avenue were retraced on the basis of physical improvements within Blocks A, B, C, D, 14, 15, 16, 17, 19, & 20; emphasis was given to age and quality of improvements.

SCALE: 1" = 50'

Basis of Bearings is the Record bearings as shown per the Western Pacific Addition to the City of Portola.

PARCEL MAP FOR  
**THE WESTERN PACIFIC RAILROAD COMPANY**

A PORTION OF THE N.W. 1/4, N.W. 1/4, SEC. 1, T.22N., R.13E., M.D.B.1M. WITHIN THE CITY OF PORTOLA, PLUMAS COUNTY, CALIF.

SCALE: 1" = 50'  
PAUL E. SIMPSON, & ASSOCIATES, ENGINEERS & SURVEYORS  
L.S. 3202, 45 S. ROOP ST., SUSANVILLE, CALIF.