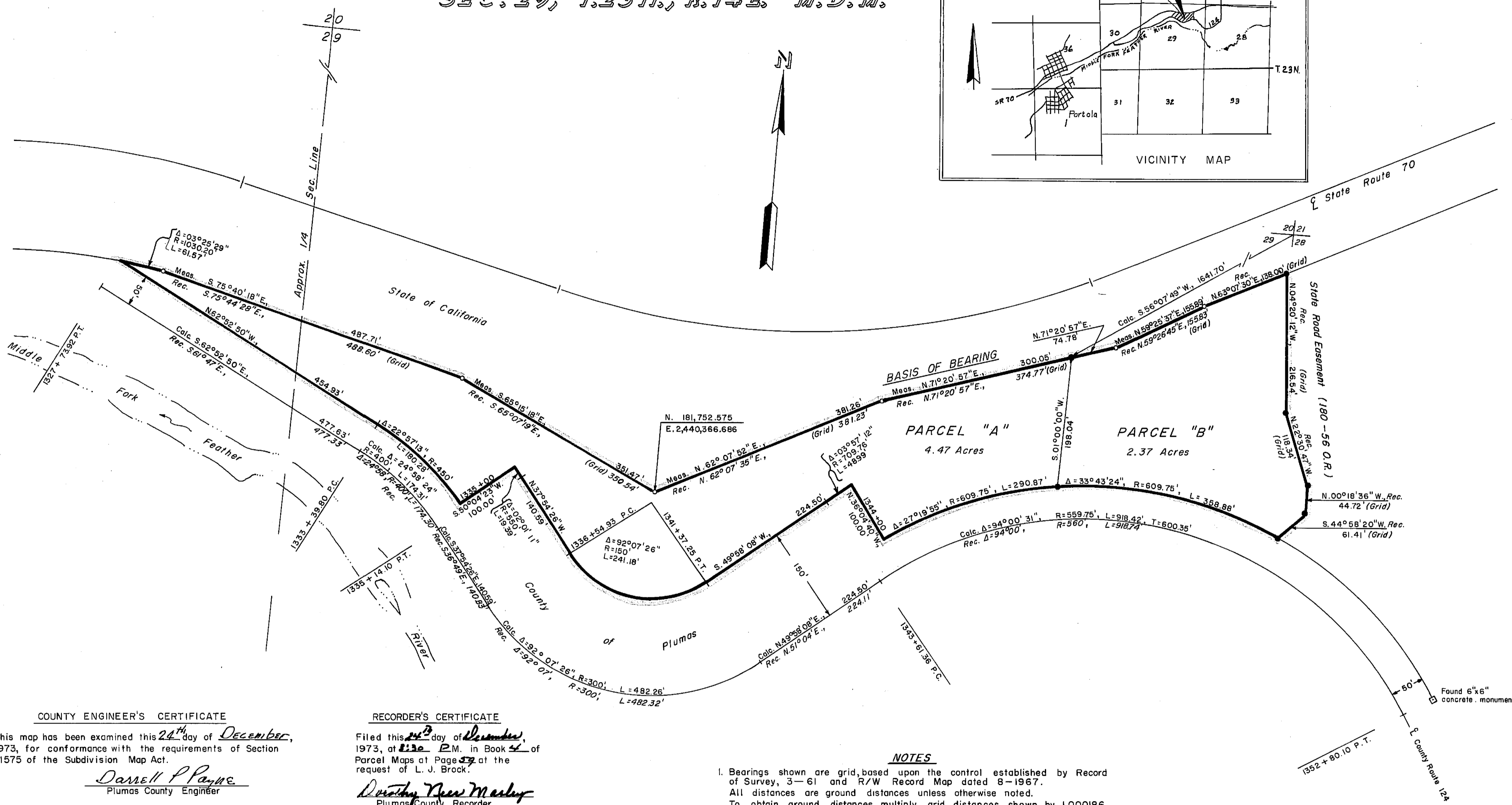
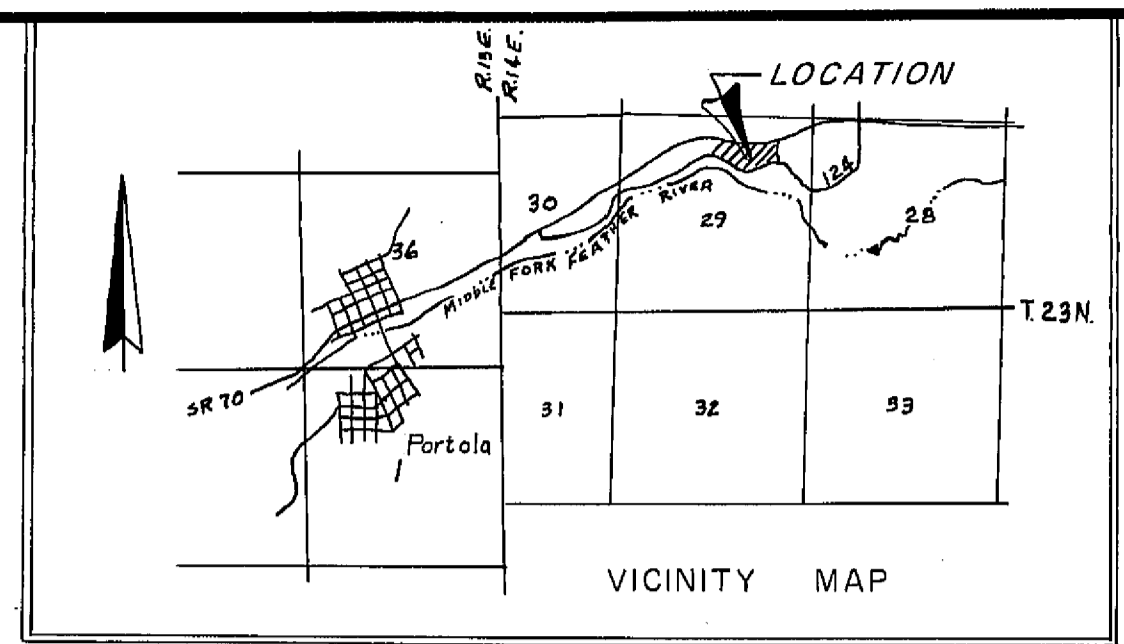


SEC. 29, T.23N., R.14E. M.D.M.



COUNTY ENGINEER'S CERTIFICATE

This map has been examined this 24<sup>th</sup> day of December, 1973, for conformance with the requirements of Section 11575 of the Subdivision Map Act.

Darrell P. Payne  
Plumas County Engineer

RECORDER'S CERTIFICATE

Filed this 24<sup>th</sup> day of December, 1973, at 2:30 P.M. in Book 4 of Parcel Maps at Page 37 at the request of L. J. Brock.

Dorothy New Marley  
Plumas County Recorder

Fee 5.00  
File No. 3555

SURVEYOR'S CERTIFICATE

This map was prepared by me or under my direction and is based upon a field survey in conformance with the subdivision Map Act at the request of Jane Ramelli et al. in December 1973. I hereby certify that it conforms to the approved tentative map and the conditions of approval thereof; that all provisions of applicable state law and local ordinances have been complied with.

L. J. Brock  
L. J. Brock  
R.C.E. 13528

COUNTY TAX COLLECTOR'S CERTIFICATE

I, the undersigned, County Tax Collector of the County of Plumas State of California, do hereby certify that there are no tax liens against Parcels A & B as shown hereon or unpaid state, county, municipal, or local taxes, or spl. assessments collected as taxes, except taxes or assessments not yet payable. Taxes or assessments which are a lien but not yet payable, are estimated to be in the amount of NONE.

Douglas S. Reschman  
Plumas County Tax Collector

NOTES

- Bearings shown are grid, based upon the control established by Record of Survey, 3-61 and R/W Record Map dated 8-1967. All distances are ground distances unless otherwise noted. To obtain ground distances, multiply grid distances shown by 1.000186.
- The centerline of County Road No. 124 was established from record information and found right of way monuments opposite engineer's stations 1268 + 79.07 P.T. and 1352 + 80.10 P.T..

LEGEND

- o Found monument tagged R.C.E. 5569
- Set 1/2" iron pipe tagged R.C.E. 13528
- Rec. - Record
- Calc. - Calculated
- Meas. - Measured

PARCEL MAP

of  
SUBDIVISION OF TWO PARCELS FOR JANE RAMELLI et al.  
WITHIN THE N 1/2 OF SECTION 29, T.23N., R.14E. M.D.B.&M.  
IN PLUMAS, COUNTY CALIFORNIA.

Scale: 1" = 100'

L. J. BROCK, PLUMAS COUNTY ROAD COMMISSIONER  
QUINCY, CALIFORNIA  
R.C.E. 13528

4/11/73