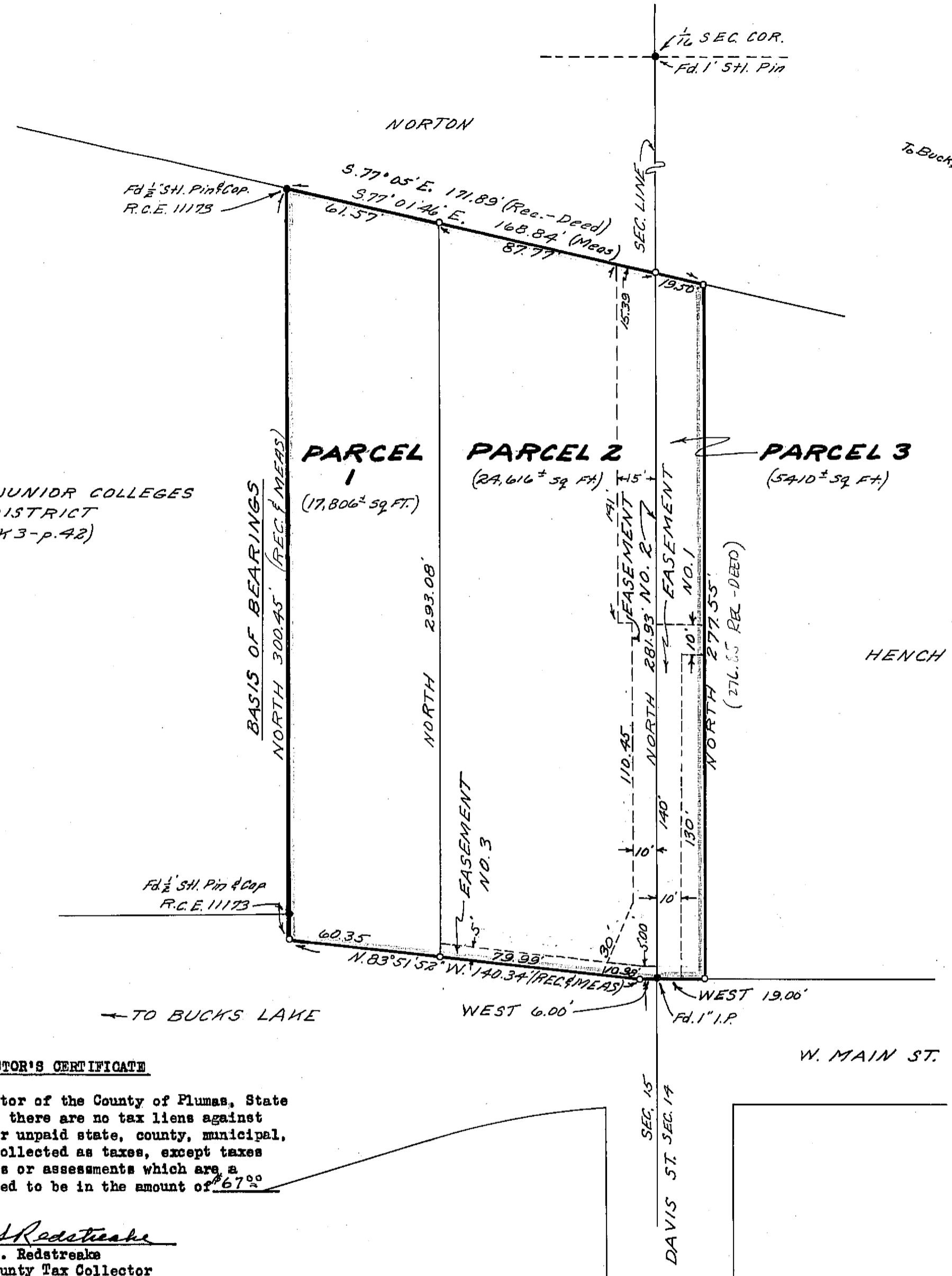


PERALTA JUNIOR COLLEGES DISTRICT (P.M. BK3-p.42)



LEGEND

- Found Monuments as noted
- Set 1/2" Steel Pin with plastic cap stamped R.C.E. 11173
- I.P. Iron Pipe
- Fd. Found
- Rec. Record (from deed, record map, etc.)
- Mens. Measured
- Stl. Steel
- P.M. Parcel Map
- Bk. Book
- p. Page

- NOTES**
1. Tentative Parcel Map approved by Plumas County Planning Commission June 11, 1973.
 2. Parcel 3 to be conveyed only to Hench, or successor, as addition to Hench parcel.
 3. Easement No. 1 to be established concurrently with the filing of this map for the operation and maintenance of an underground sanitary sewer and appurtenances for the benefit of the Quincy Sanitary District.
 4. Easement No. 2 to be established concurrently with the filing of this map for the operation and maintenance of a drainage ditch, or underground conduit, for the benefit of the County of Plumas, State of California.
 5. Easement No. 3 to be established concurrently with the filing of this map for the construction, operation and maintenance of an underground sewer lateral for the benefit of Parcel 1 hereon.
 6. See Planning Commission minutes for restrictions on future building.

SURVEYOR'S CERTIFICATE

This map was prepared by me or under my direction (and is based upon a field survey) in conformance with the subdivision Map Act at the request of Charles M. Smith, July 20, 1973. I hereby certify that it conforms to the approved tentative map and the conditions of approval thereof; that all provisions of applicable state law and local ordinances have been complied with.



John C. Simpson
 John C. Simpson
 R.C.E. 11173

COUNTY TAX COLLECTOR'S CERTIFICATE

I, the undersigned, County Tax Collector of the County of Plumas, State of California, do hereby certify that there are no tax liens against Parcels 1, 2, and 3 as shown hereon or unpaid state, county, municipal, or local taxes, or spl. assessments collected as taxes, except taxes or assessments not yet payable. Taxes or assessments which are a lien but not yet payable, are estimated to be in the amount of \$67.⁰⁰

Douglas S. Redstreake
 Douglas S. Redstreake
 Plumas County Tax Collector

RECORDER'S CERTIFICATE

Filed this 23rd day of August, 1973, at 4:50 P.M. in Book 4 of Parcel Maps at Page 41 at the request of John C. Simpson.

Dorothy New Masler
 Dorothy New Masler
 Plumas County Recorder

COUNTY SURVEYOR'S CERTIFICATE

This map has been examined this 22nd day of August, 1973, for conformance with the requirements of Section 11575 of the Subdivision Map Act.

Danell P. Payne
 Danell P. Payne
 Plumas County Surveyor

Fee \$5.00
 File No. 166

JOHN C. SIMPSON P.E.
 CIVIL ENGINEER
 P.O. BOX 719
 QUINCY, CALIFORNIA

PARCEL MAP
 OF
SUBDIVISION OF THREE PARCELS

FOR
CHARLES M. AND ERIN D. SMITH

RECORD OWNERS
 WITHIN
 SE 1/4 SE 1/4, SEC. 15, T.24N, R.9E, M.D.M.
 AND THE TOWN OF QUINCY
 PLUMAS COUNTY, CALIFORNIA