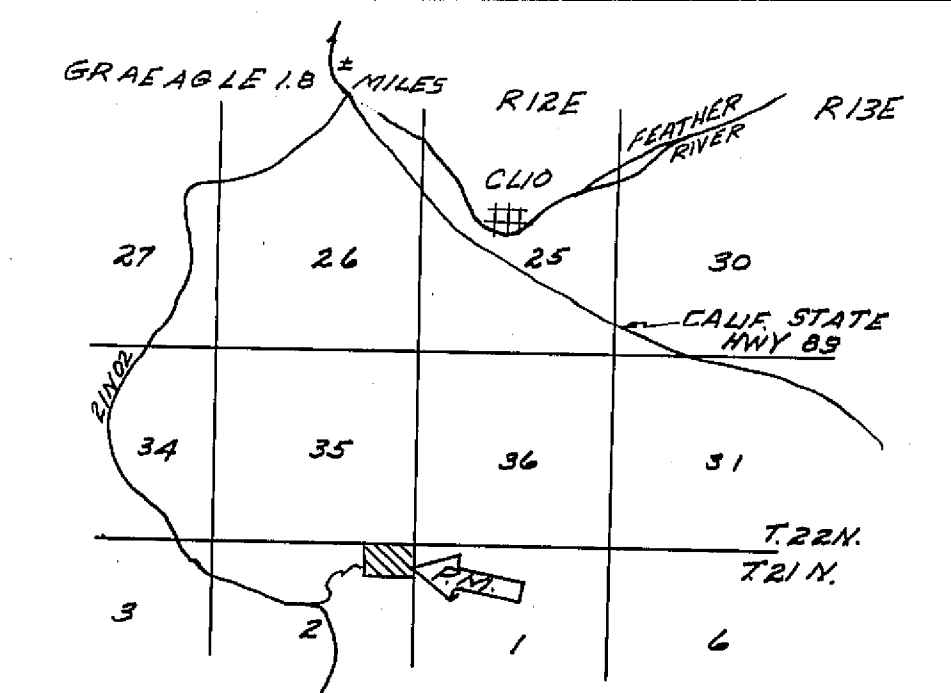
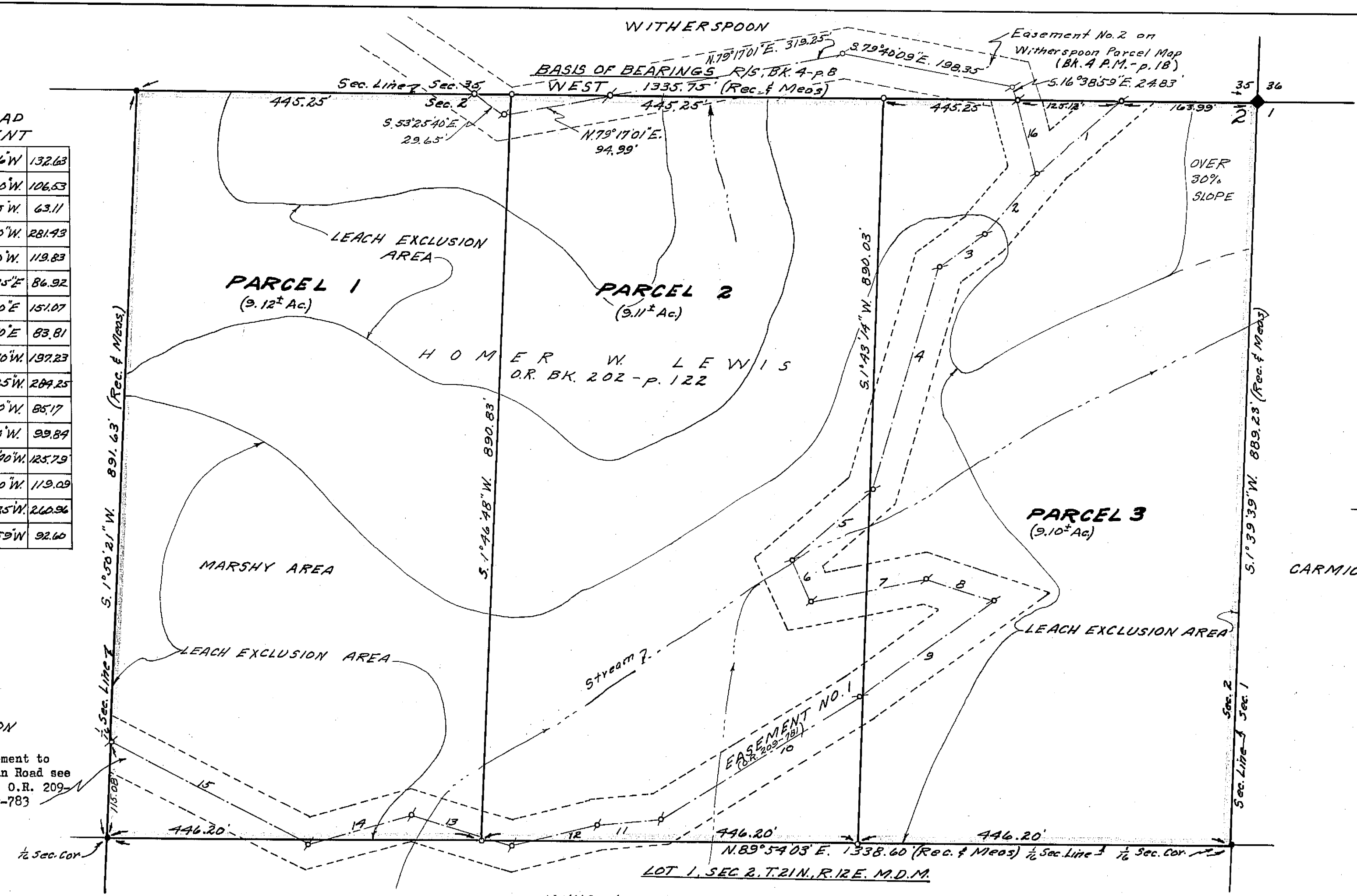


60' ROAD EASEMENT

1	S. 48° 01' 06" W	132.63
2	S. 37° 28' 20" W	106.53
3	S. 54° 18' 45" W	63.11
4	S. 16° 45' 30" W	281.43
5	S. 51° 50' 00" W	119.83
6	S. 19° 49' 35" E	86.92
7	N. 73° 30' 00" E	151.07
8	S. 73° 04' 10" E	83.81
9	S. 52° 03' 10" W	197.23
10	S. 60° 54' 25" W	209.25
11	S. 89° 58' 10" W	85.17
12	S. 77° 12' 20" W	99.89
13	N. 74° 24' 40" W	125.79
14	S. 79° 16' 10" W	119.09
15	N. 66° 18' 35" W	210.96
16	N. 16° 38' 59" W	92.60



SCALE 1"=100'

- LEGEND**
- Found 1/2" Steel Pin and mound of stone, R.C.E. 11173, and bearing tree
 - o Set 1/2" Steel Pin with plastic cap stamped R.C.E. 11173 and mound of stone
 - Survey point - no permanent monument set
 - Rec. Record (from deed, record map, etc.)
 - Meas. Measured
 - Ac. Acre
 - O.R. Official Records, Plumas Co. records
 - Ek. Book
 - p. Page

EASEMENT NO. 1 to be established by separate document, recorded concurrently with the filing of this map, as a non-exclusive easement for roadway, drainage, utilities and incidental purposes for the benefit of Parcels 1, 2, and 3, as shown hereon.

- NOTES**
1. Tentative Parcel Map approved by Plumas Co. Planning Commission Sept. 27, 1971. Amended map Nov. 29, 1971.
 2. See Record of Survey, Ek. 4, p. 8 for additional data on boundary.
 3. Access to the parcels shown hereon is by means of a U. S. Forest Service Road and a private road (and easement) across lands lying between the parcels hereon and said Forest Road.
 4. No leach field permitted within 100 ft. of a seasonal drainage channel, nor upon slopes of over 30% or within 50 ft. of the top of such slope.
 5. Non-exclusive easement right for Witherspoon Easement No. 2 and land between Easement No. 2 and north line of Parcels 2 and 3 hereon granted to Lewis for benefit of Parcels 2 and 3 hereon, for roadway, drainage, utilities and incidental purposes. (See Parcel Map Ek. 4, p. 18, and O.R. Ek. 220, p. 185.)

SALVESON
For road easement to Mohawk-Chapman Road see O.R. 209-776, O.R. 209-778, O.R. 209-783

COUNTY TAX COLLECTOR'S CERTIFICATE

I, the undersigned, County Tax Collector of the County of Plumas, State of California, do hereby certify that there are no tax liens against Parcels One thru Three, incl., as shown hereon, or unpaid state, county, municipal, or local taxes, or spl. assessments collected as taxes, except taxes or assessments not yet payable. Taxes or assessments which are a lien but not yet payable, are estimated to be in the amount of NONE.

Douglas S. Rediske
Plumas County Tax Collector

COUNTY SURVEYOR'S CERTIFICATE

This map has been examined this 15th day of Feb, 1973, for conformance with the requirements of Section 11575 of the Subdivision Map Act.

Daniel P. Papp
Plumas County Surveyor



SURVEYOR'S CERTIFICATE

This map was prepared by me or under my direction (and is based upon a field survey) in conformance with the Subdivision Map Act at the request of Homer W. Lewis, May 25, 1972. I hereby certify that it conforms to the approved tentative map and the conditions of approval thereof; that all provisions of applicable state law and local ordinances have been complied with.

John C. Simpson
JOHN C. SIMPSON, R.C.E. 11173

RECORDER'S CERTIFICATE

Filed this 17th day of February, 1973, at 3:30 P.M. in Book 4 of Parcel Maps, at Page 7 at the request of John C. Simpson.

Dorothy Dees Markey
Plumas County Recorder

PARCEL MAP OF SUBDIVISION OF THREE PARCELS

FOR HOMER W. LEWIS
RECORD OWNER
WITHIN LOT 1, SEC. 2, T.21N., R.12E., M.D.M.
PLUMAS COUNTY, CALIFORNIA

JOHN C. SIMPSON, P.E.
CIVIL ENGINEER
P.O. BOX 719
QUINCY, CALIFORNIA

Fee \$5.00
File No. 3860

4pm 17