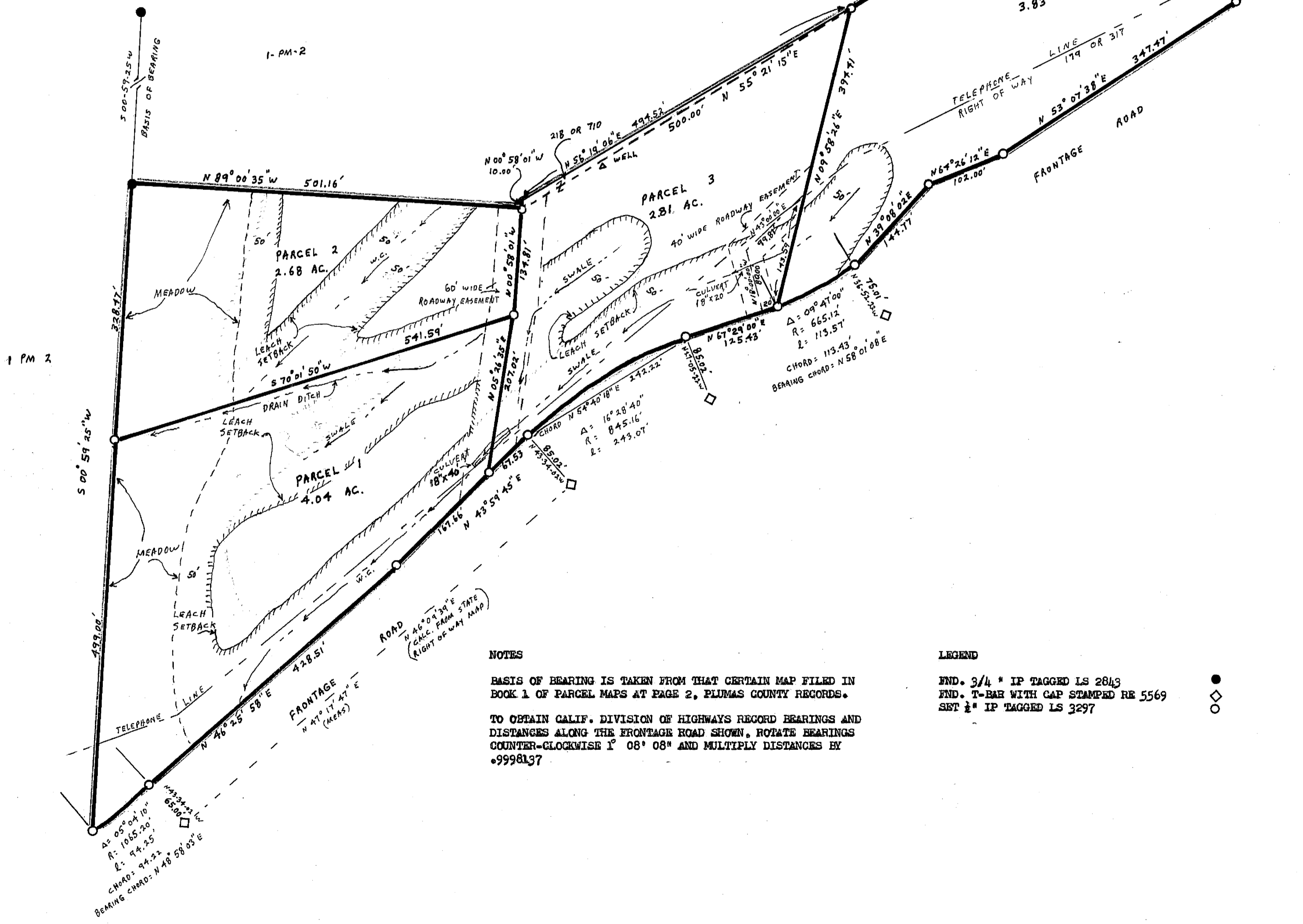
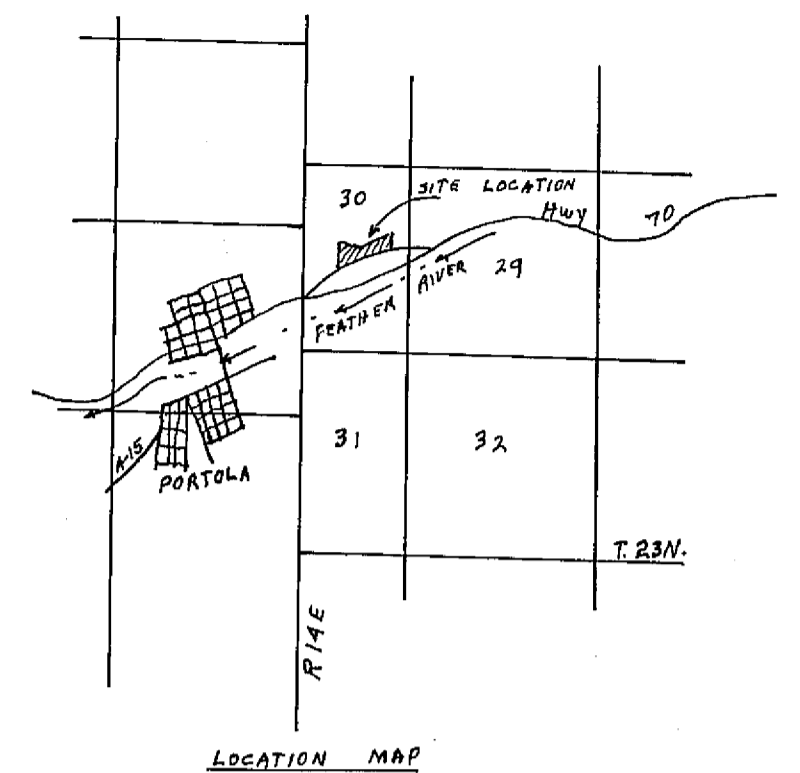


I, THE UNDERSIGNED COUNTY TAX COLLECTOR OF THE COUNTY OF PLUMAS, STATE OF CALIFORNIA, DO HEREBY CERTIFY THAT THERE ARE NO TAX LIENS AGAINST PARCELS 1 THROUGH 4 INCLUSIVE AS SHOWN HEREON, OR UNPAID STATE, COUNTY, MUNICIPAL, OR LOCAL TAXES, OR SPECIAL ASSESSMENTS COLLECTED AS TAXES EXCEPT TAXES OR ASSESSMENTS NOT YET PAYABLE. TAXES OR ASSESSMENTS WHICH ARE A LIEN BUT NOT YET PAYABLE ARE ESTIMATED TO BE IN THE AMOUNT OF NONE

Douglas S. Redstreake
 DOUGLAS S. REDSTREAKE
 PLUMAS COUNTY TAX COLLECTOR



SURVEYOR'S CERTIFICATE

THIS MAP WAS PREPARED BY ME OR UNDER MY DIRECTION AND IS BASED UPON A FIELD SURVEY IN CONFORMANCE WITH THE REQUIREMENTS OF THE SUBDIVISION MAP ACT AT THE REQUEST OF G. KNOX AND H. HANSEN IN JULY 1972. I HEREBY CERTIFY THAT IT CONFORMS TO THE APPROVED TENTATIVE MAP AND THE CONDITIONS OF APPROVAL THEREOF, AND THAT ALL PROVISIONS OF APPLICABLE STATE LAW AND LOCAL ORDINANCES HAVE BEEN COMPLIED WITH.

Gerald C. Henderson
 GERALD G. HENDERSON LS 3297

COUNTY SURVEYOR'S CERTIFICATE

THIS MAP HAS BEEN EXAMINED FOR CONFORMANCE WITH THE REQUIREMENTS OF SECTION 11575 OF THE SUBDIVISION MAP ACT THIS 1st DAY OF Feb 1973

Darrell P. Payne
 DARRELL P. PAYNE RCE 78596

COUNTY RECORDER'S CERTIFICATE

FILED THIS 2nd DAY OF February 1973, AT 3:47 PM. IN BOOK 4 OF PARCEL MAPS AT PAGE 14 AT THE REQUEST OF GERALD C. HENDERSON.

FEE 5.00
 RECORDING NO. 3500

Dorothy Newmarley
 COUNTY RECORDER

PARCEL MAP

OF A SUBDIVISION INTO FOUR PARTS
 FOR G. KNOX AND H. HANSEN JULY 1972
 PORTION OF SECTION 30, T. 23N., R. 14E., M.D.M.
 PORTION OF PARCEL 3 IN BOOK 1 OF PARCEL MAPS AT PAGE 2
 PLUMAS COUNTY, CALIF.

NOTES

BASIS OF BEARING IS TAKEN FROM THAT CERTAIN MAP FILED IN BOOK 1 OF PARCEL MAPS AT PAGE 2, PLUMAS COUNTY RECORDS.

TO OBTAIN CALIF. DIVISION OF HIGHWAYS RECORD BEARINGS AND DISTANCES ALONG THE FRONTAGE ROAD SHOWN, ROTATE BEARINGS COUNTER-CLOCKWISE 1° 08' 08" AND MULTIPLY DISTANCES BY .9998137

LEGEND

- FND. 3/4" IP TAGGED LS 2843
- FND. T-BAR WITH CAP STAMPED RE 5569
- SET 1/2" IP TAGGED LS 3297



GERALD C. HENDERSON
 LICENSED LAND SURVEYOR
 P. O. BOX 13
 PORTOLA, CALIFORNIA