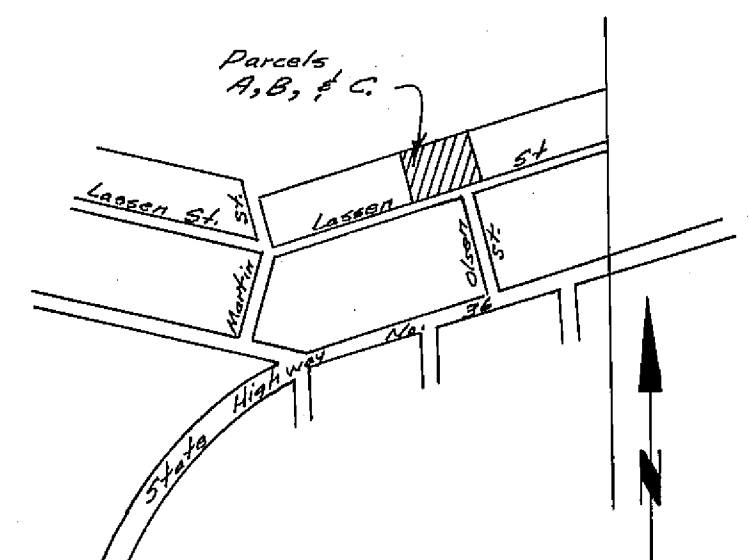


SCALE: 1" = 40'

Basis of Bearings is the Record shown for Lassen Street on that Map filed in Book 3 of Parcel Maps at page 124.



VICINITY MAP
Scale: 1" = 500'

~ LEGEND ~

- Found 3/4" iron pipe tagged "R.C.E. 7567"
- Set 1/2" iron pipe tagged "L.S. 3202"

I, the undersigned, County Tax Collector of the County of Plumas, State of California, do hereby certify that there are no tax liens against Parcels A, B, & C inclusive, as shown hereon, or unpaid state, county, municipal, or local taxes, or special assessments collected as taxes, except taxes or assessments not yet payable. Taxes or assessments which are a lien but not yet payable are estimated to be in the amount of NONE.

Douglas S. Redstreak
Douglas S. Redstreak, Plumas County Tax Collector

CERTIFICATES:

This map was prepared by me or under my direction, and was compiled from a field survey in conformance with the requirements of the Subdivision Map Act at the request of Roy Kempley in Oct. 1972. I hereby certify that it conforms to the approved tentative map and the conditions of approval thereof; that all provisions of applicable state laws and local ordinances have been observed.

Paul E. Simpson
Paul E. Simpson, Licensed Land Surveyor No. 3202



This map has been examined this 19th day of JANUARY, 1973 for conformance with the requirements of Section 11575 of the Subdivision Map Act.

Darrell P. Payne
Darrell P. Payne, R.C.E. 8536, Plumas County Surveyor

Filed for record this 23rd day of JANUARY, 1973 at 4:40 P.M. in Book 3 of Parcel Maps at Page 10 at the request of Paul E. Simpson. Fee: \$ 5.00 File No. 3344

Dorothy Near Marley
Dorothy Near Marley, Plumas County Recorder

PARCEL MAP FOR
ROY KEMPLEY

OF LOTS 23, 24, 25, & A PORTION OF LOTS 22 & 26,
BLOCK B, TOWNSITE OF CHESTER
PLUMAS COUNTY, CALIFORNIA

SCALE: 1" = 40'
PAUL E. SIMPSON & ASSOCIATES, ENGINEERS & SURVEYORS
SUSANVILLE, CALIFORNIA