

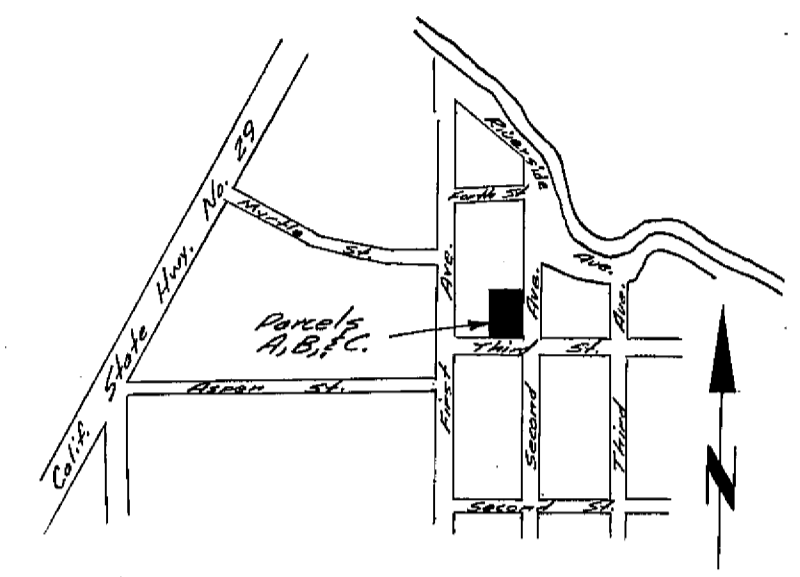
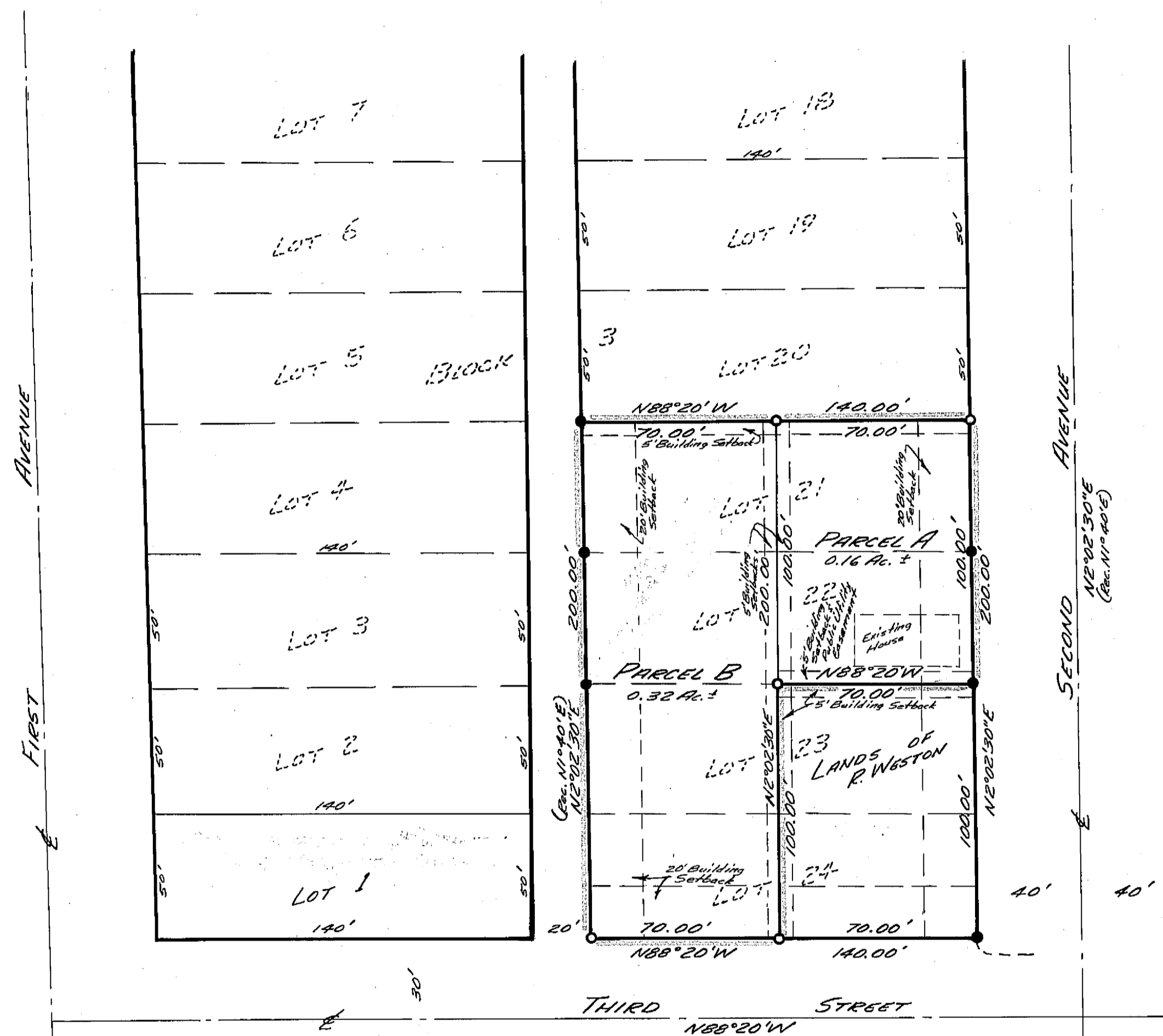


SCALE: 1" = 40'

Basis of Bearings is the E of Third Street per Mt. Lassen View Addition and per Parcel Map Book 3 at page 94

~ LEGEND ~

- Found 2" iron pipe
- Set 3/4" iron pipe tagged "L.S. 3202"



VICINITY MAP Scale: 1" = 800'

BLOCK 5  
MT. LASSEN VIEW  
ADDITION

380.90' to Found 2" iron pipe at the S.E. Cor of Block 5 per Parcel Map Book 3p. 94

BLOCK 2

I, the undersigned, County Tax Collector of the County of Plumas, State of California, do hereby certify that there are no tax liens against Parcels A, B and C, as shown hereon, or unpaid state, county, municipal, or local taxes or special assessments collected as taxes except taxes or assessments not yet payable. Taxes or assessments which are a lien but not yet payable, are estimated to be in the amount of NONE.

Douglas S. Redstreake  
Douglas S. Redstreake, Plumas County Tax Collector

CERTIFICATES:

This map was prepared by me or under my direction, and was compiled from a field survey in conformance with the requirements of the Subdivision Map Act at the request of Northern Calif. Investments, Inc. in Nov. 1972. I hereby certify that it conforms to the approved tentative map and the conditions of approval thereof and the provisions of applicable State Law and ordinances have been complied with.

Paul E. Simpson  
Paul E. Simpson, Licensed Land Surveyor, No. 3202

This map has been examined this 17th day of August, 1972 for conformance with the requirements of Section 11575 of the Subdivision Map Act.

Darrell P. Payne  
Darrell P. Payne, Plumas County Surveyor, R.C.E. 8596

Filed for record this 5th day of December, 1972 at 2:20 P.M. in Book 7 of Parcel Maps at Page 7 at the request of Paul E. Simpson. Fee: \$ 5.00 File No. 72-33

Dorothy New Marley  
Dorothy New Marley, Plumas County Recorder

PARCEL MAP FOR  
NORTHERN CALIFORNIA  
INVESTMENTS, INC.

LOTS 21, 22, 23, & 24, BLOCK 3, MT. LASSEN VIEW ADD.  
TOWN OF CHESTER, PLUMAS CO., CALIF.

SCALE: 1" = 40'

PAUL E. SIMPSON & ASSOCIATES, ENGINEERS & SURVEYORS  
SUSANVILLE, CALIFORNIA