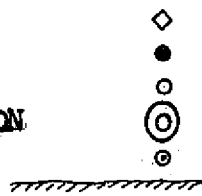


NOTE

BASIS OF BEARING IS TAKEN FROM FOUND MONUMENTS AS SHOWN IN BOOK 3 OF MAPS AT PAGE 43, PLUMAS COUNTY RECORDS.

LEGEND

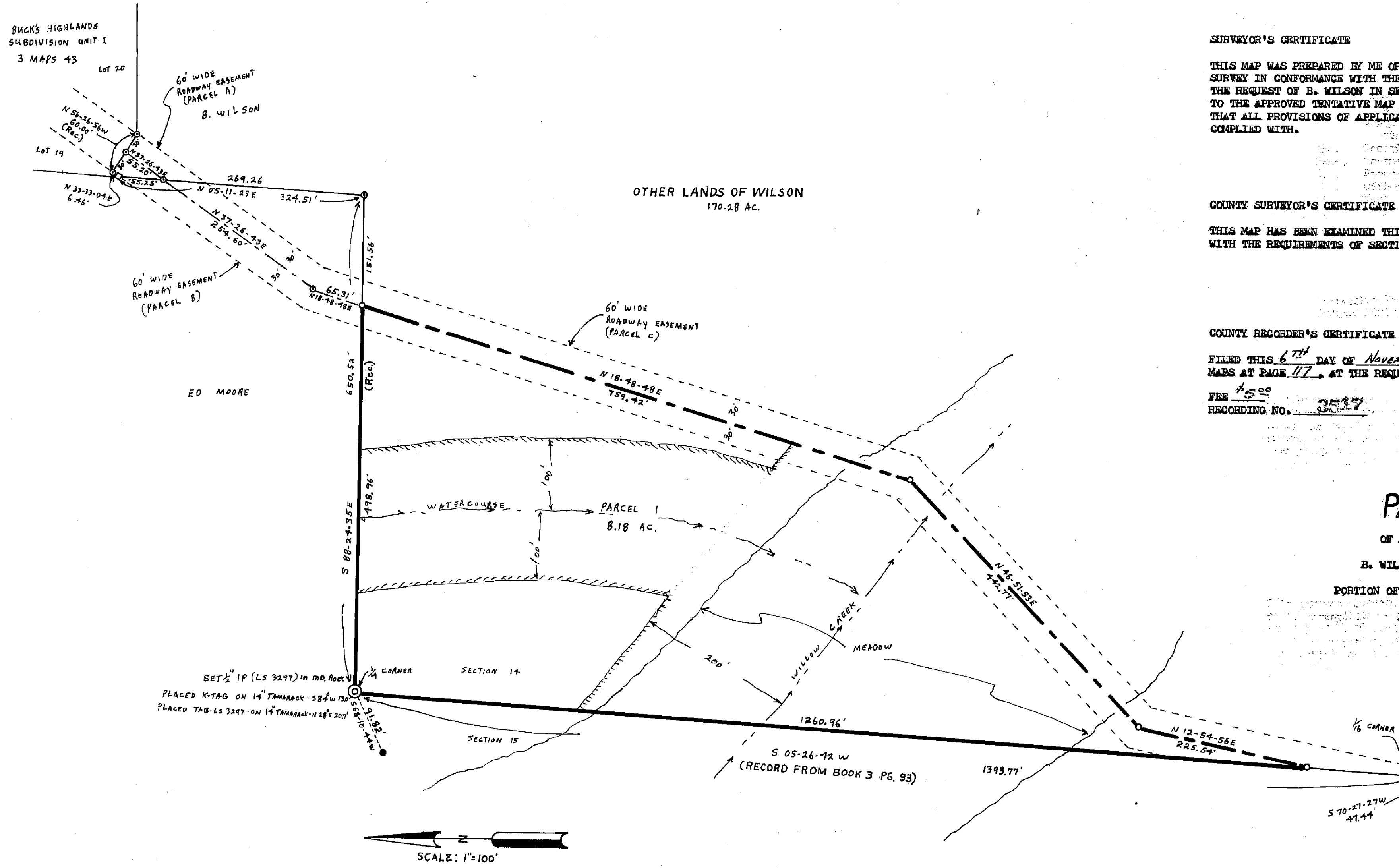
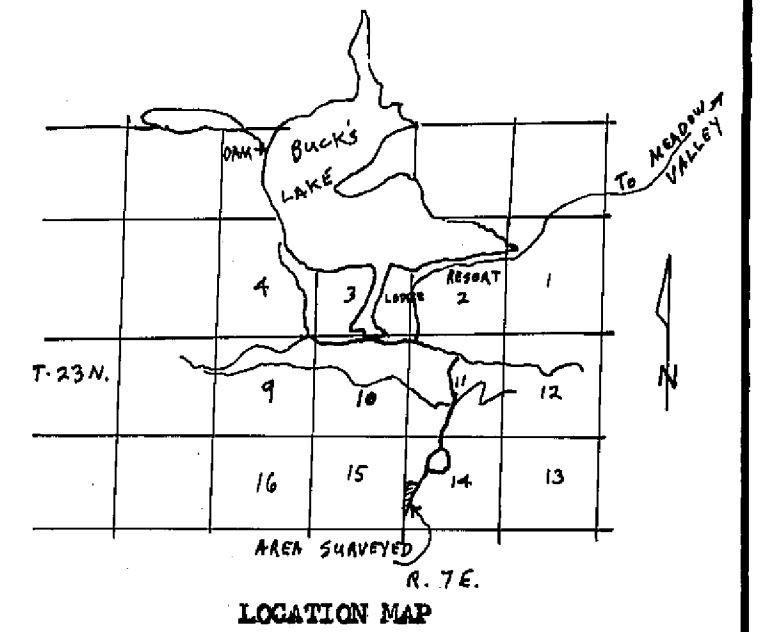
FOUND 1/4" IP TAGGED RCE 7294
FOUND 1/4" IP TAGGED LS 2702
SET 1/4" IP TAGGED LS 3297
SET 1/4 CORNER FROM RECORD AS DESCRIBED HERRON
COMPUTED CORNER LOCATION
LEACH SETBACK LINE



TAX COLLECTOR'S CERTIFICATE

I, THE UNDERSIGNED COUNTY TAX COLLECTOR OF THE COUNTY OF PLUMAS STATE OF CALIFORNIA, DO HEREBY CERTIFY THAT THERE ARE NO TAX LIENS AGAINST PARCELS 1 THROUGH 2 INCLUSIVE AS SHOWN HEREON, OR UNPAID STATE, COUNTY, MUNICIPAL, OR LOCAL TAXES, OR SPECIAL ASSESSMENTS COLLECTED AS TAXES EXCEPT TAXES OR ASSESSMENTS NOT YET PAYABLE. TAXES OR ASSESSMENTS WHICH ARE A LIEN BUT NOT YET PAYABLE ARE ESTIMATED TO BE IN THE AMOUNT OF NONE

Douglas S. Redstreak
DOUGLAS S. REDSTREAK
PLUMAS COUNTY TAX COLLECTOR



SURVEYOR'S CERTIFICATE

THIS MAP WAS PREPARED BY ME OR UNDER MY DIRECTION AND IS BASED UPON A FIELD SURVEY IN CONFORMANCE WITH THE REQUIREMENTS OF THE SUBDIVISION MAP ACT AT THE REQUEST OF B. WILSON IN SEPTEMBER 1974. I HEREBY CERTIFY THAT IT CONFORMS TO THE APPROVED TENTATIVE MAP AND THE CONDITIONS OF APPROVAL THEREOF, AND THAT ALL PROVISIONS OF APPLICABLE STATE LAW AND LOCAL ORDINANCES HAVE BEEN COMPLIED WITH.

Gerald C. Henderson
GERALD C. HENDERSON LS 3297

COUNTY SURVEYOR'S CERTIFICATE

THIS MAP HAS BEEN EXAMINED THIS 6th DAY OF November 1974, FOR CONFORMANCE WITH THE REQUIREMENTS OF SECTION 11575 OF THE SUBDIVISION MAP ACT.

Larry A. Fites
LARRY A. FITES RCE 13225
PLUMAS COUNTY SURVEYOR

COUNTY RECORDER'S CERTIFICATE

FILED THIS 6th DAY OF NOVEMBER, 1974, AT 4:10 P.M., IN BOOK 4 OF PARCEL MAPS AT PAGE 117, AT THE REQUEST OF GERALD C. HENDERSON.

FEE \$5.00
RECORDING NO. 3517

Dorothy Ann Malley
COUNTY RECORDER by *Kathryn E. Loveland*
Deputy

PARCEL MAP

OF A SUBDIVISION INTO TWO PARTS
FOR

B. WILSON FOR SEPTEMBER 1974

PORTION OF SECTION 14, T. 23N., R. 7E., M.D.M.

PLUMAS COUNTY, CALIFORNIA

GERALD C. HENDERSON
LICENSED LAND SURVEYOR
P. O. BOX 13
PORTOLA, CALIFORNIA

