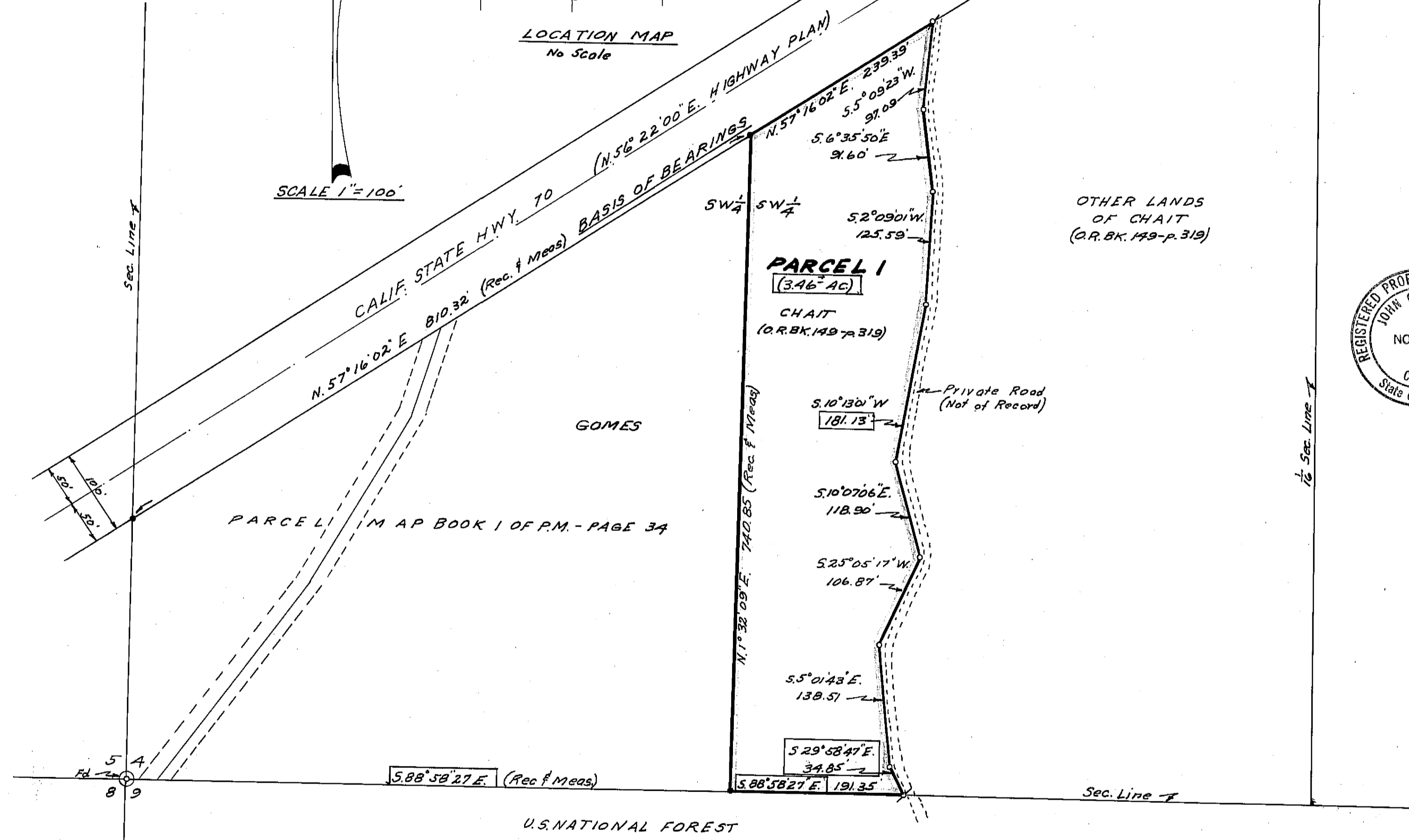


LOCATION MAP
No Scale

SCALE 1"=100'



- LEGEND**
- ⊙ Found 3/4" Iron Pipe and Tag L.S. 2843
 - ⊙ 5/8" Steel Pin and Brass Cap
 - ⊙ Set 1/2" Steel Pin with plastic cap stamped "R.C.E. 11173"
 - Set 3/4" or 1" Steel Pin
 - O.R. Official Records, Plumas County records
 - Bk. Book
 - p. Page
 - P.M. Parcel Map
 - Rec. Record (from deed, P.M., etc.)
 - Meas. Measured

NOTE

Tentative Parcel Map approved by Plumas County Planning Commission June 28, 1971.

SURVEYOR'S CERTIFICATE

This map was prepared by me or under my direction (and is based upon a field survey) in conformance with the requirements of the Subdivision Map Act at the request of Robert R. Chait, July 30, 1971. I hereby certify that it conforms to the approved tentative map and the conditions of approval thereof; that all provisions of applicable state law and local ordinances have been complied with.

John C. Simpson
John C. Simpson
R.O.E. 11173



This map is identical to that parcel map filed August 9, 1971, in Book 3 of Parcel Maps at page 71, records of the County of Plumas, State of California, except for corrected dimensions indicated thus 5.88°58'27" E.

RECORDER'S CERTIFICATE

Filed this 14 day of JULY, 1972, at 2:45 P.M. in Book 3 of Parcel Maps at Page 112 at the request of John C. Simpson.

Dorothy Nease Masley
Plumas County Recorder
By *Farel Abraham Thomas*, Deputy

Fee \$5.00
File No. 6527

COUNTY SURVEYOR'S CERTIFICATE

This map has been examined this 17 day of July, 1972, for conformance with the requirements of Section 11575 of the Subdivision Map Act.

Wanell P. Payne
Plumas County Surveyor

**AMENDED
PARCEL MAP
OF
SUBDIVISION OF ONE PARCEL
FOR**

ROBERT R. CHAIT AND TOBY W. CHAIT
RECORD OWNERS
WITHIN SW1/4 SW1/4, SEC. 4, T22N, R13E, MDM.
PLUMAS COUNTY, CALIFORNIA

JOHN C. SIMPSON, P.E.
CIVIL ENGINEER
QUINCY, CALIFORNIA