

I, THE UNDERSIGNED COUNTY TAX COLLECTOR OF THE COUNTY OF PLUMAS, STATE OF CALIFORNIA, DO HEREBY CERTIFY THAT THERE ARE NO TAX LIENS AGAINST PARCELS 1 THROUGH 4 INCLUSIVE, AS SHOWN HEREON, OR UNPAID STATE, COUNTY, MUNICIPAL, OR LOCAL TAXES, OR SPECIAL ASSESSMENTS COLLECTED AS TAXES, EXCEPT TAXES OR ASSESSMENTS NOT YET PAYABLE. TAXES OR ASSESSMENTS WHICH ARE A LIEN, BUT NOT YET PAYABLE ARE ESTIMATED TO BE IN THE AMOUNT OF \$ 305.00.

Douglas S. Redstreak
 DOUGLAS S. REDSTREAK
 PLUMAS COUNTY TAX COLLECTOR

SURVEYOR'S CERTIFICATE

THIS MAP WAS PREPARED BY ME OR UNDER MY DIRECTION AND IS BASED UPON A FIELD SURVEY IN CONFORMANCE WITH THE REQUIREMENTS OF THE SUBDIVISION MAP ACT AT THE REQUEST OF B.D. DUCHARME IN AUG. 1971. I HEREBY CERTIFY THAT IT CONFORMS TO THE APPROVED TENTATIVE MAP AND THE CONDITIONS OF APPROVAL THEREOF, AND THAT ALL PROVISIONS OF APPLICABLE STATE LAW AND LOCAL ORDINANCES HAVE BEEN COMPLIED WITH.

Gerald C. Henderson
 GERALD C. HENDERSON L.S. 3297

COUNTY SURVEYOR'S CERTIFICATE

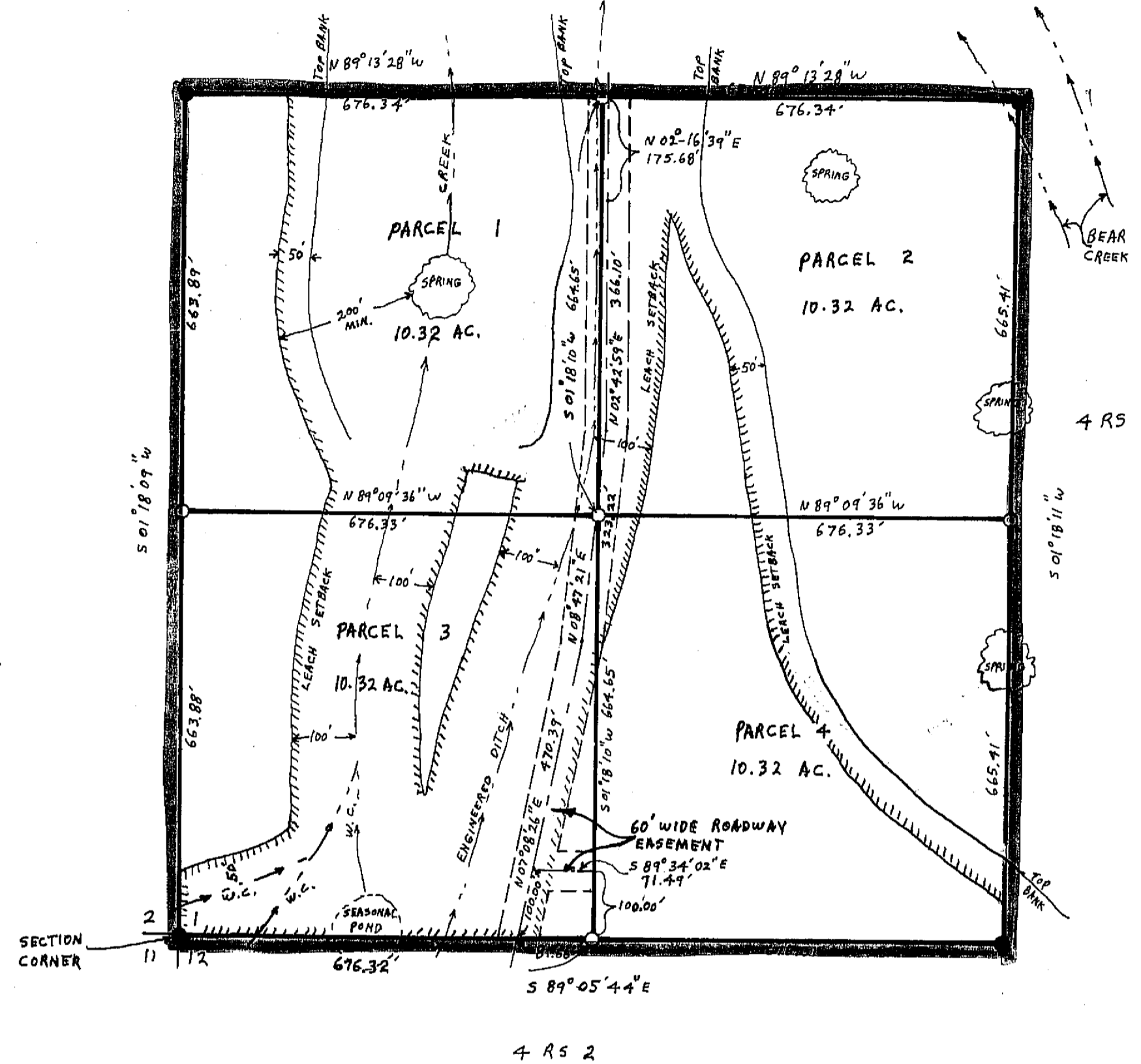
THIS MAP HAS BEEN EXAMINED FOR CONFORMANCE WITH THE REQUIREMENTS OF SECTION 11575 OF THE SUBDIVISION MAP ACT THIS 5TH DAY OF MAY 1972.

Darrell P. Payne
 DARRELL P. PAYNE R.C.E. 8596

COUNTY RECORDER'S CERTIFICATE

FILED THIS 31ST DAY OF MAY 1972, AT 9:20 A.M., IN BOOK 3 OF PARCEL MAPS AT PAGE 107, AT THE REQUEST OF GERALD C. HENDERSON.

FEE \$ 5.00
 RECORDING No. 5754
Dorothy Ann Marley
 COUNTY RECORDER



NOTES
 BASIS OF BEARING IS TAKEN FROM THAT CERTAIN MAP FILED IN BOOK 4 OF RECORD OF SURVEYS AT PAGE 2, PLUMAS COUNTY RECORDS. ACCESS TO THESE PARCELS IS OVER U.S. FOREST SERVICE ROADS.

LEGEND
 FND. 1/2" OR 3/4" IP TAGGED L.S. 3297
 SET 1/2" OR 3/4" IP TAGGED L.S. 3297
 CENTERLINE ROADWAY EASEMENT
 WATERCOURSE

PARCEL MAP
OF A SUBDIVISION INTO FOUR PARTS
B. D. DUCHARME FOR AUG. 1971
S.W. 1/4 OF S.W. 1/4 OF SECTION 1
T. 22 N., R. 11 E., M.D.M.
PLUMAS COUNTY, CALIFORNIA

GERALD C. HENDERSON
 LICENSED LAND SURVEYOR
 P.O. Box 13
 PORTOLA, CALIFORNIA