

I, THE UNDERSIGNED COUNTY TAX COLLECTOR OF THE COUNTY OF PLUMAS, STATE OF CALIFORNIA, DO HEREBY CERTIFY THAT THERE ARE NO TAX LIENS AGAINST PARCELS 1 THROUGH 4 INCLUSIVE, AS SHOWN HEREON, OR UNPAID STATE, COUNTY, MUNICIPAL, OR LOCAL TAXES, OR SPECIAL ASSESSMENTS COLLECTED AS TAXES, EXCEPT TAXES OR ASSESSMENTS NOT YET PAYABLE. TAXES OR ASSESSMENTS WHICH ARE A LIEN, BUT NOT YET PAYABLE ARE ESTIMATED TO BE IN THE AMOUNT OF \$ 300.00.

Douglas S. Redstreak
 DOUGLAS S. REDSTREAK
 PLUMAS COUNTY TAX COLLECTOR

SURVEYOR'S CERTIFICATE

THIS MAP WAS PREPARED BY ME OR UNDER MY DIRECTION AND IS BASED UPON A FIELD SURVEY IN CONFORMANCE WITH THE REQUIREMENTS OF THE SUBDIVISION MAP ACT AT THE REQUEST OF B. VANCE IN JULY 1971. I HEREBY CERTIFY THAT IT CONFORMS TO THE APPROVED TENTATIVE MAP AND THE CONDITIONS OF APPROVAL THEREOF, AND THAT ALL PROVISIONS OF APPLICABLE STATE LAW AND LOCAL ORDINANCES HAVE BEEN COMPLIED WITH.

Gerald C. Henderson
 GERALD C. HENDERSON L.S. 3297

COUNTY SURVEYOR'S CERTIFICATE

THIS MAP HAS BEEN EXAMINED FOR CONFORMANCE WITH THE REQUIREMENTS OF SECTION 11575 OF THE SUBDIVISION MAP ACT THIS 3rd DAY OF March 1972.

Darrell P. Payne
 DARRELL P. PAYNE R.C.E. 8546

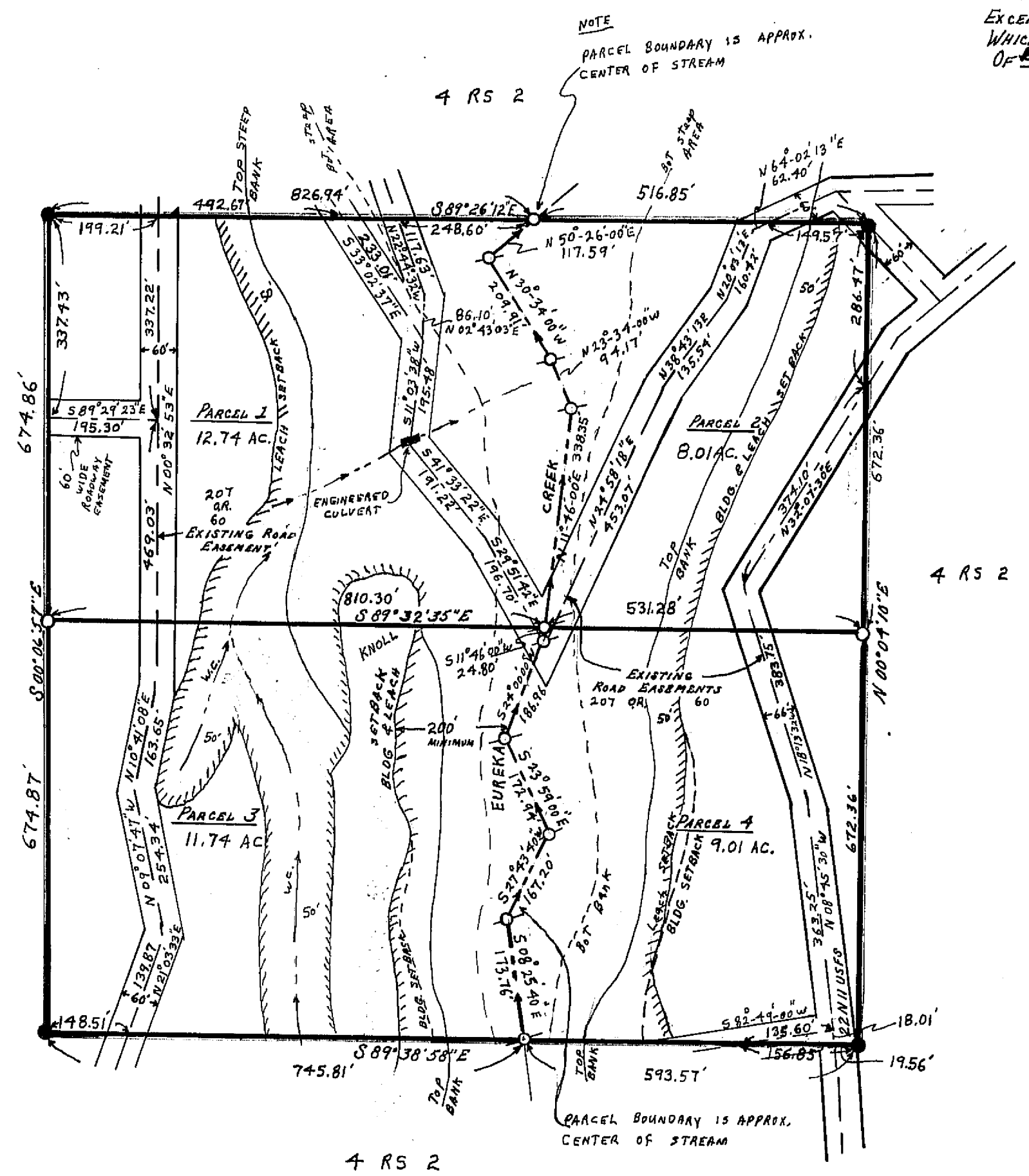
COUNTY RECORDER'S CERTIFICATE

FILED THIS 4th DAY OF April, 1972, AT 10:10 A.M., IN BOOK 3 OF PARCEL MAPS AT PAGE 122 AT THE REQUEST OF GERALD C. HENDERSON.

FEE 5.00
 RECORDING No. 4431
Dorothy Thorne Mackay
 COUNTY RECORDER

PARCEL MAP
 OF A SUBDIVISION INTO FOUR PARTS
 FOR B. VANCE JULY 1971
 N.E. 1/4 OF S.W. 1/4 OF SECTION 12
 T. 22 N., R. 11 E., M.D.M.
 PLUMAS COUNTY, CALIFORNIA

GERALD C. HENDERSON
 LICENSED LAND SURVEYOR
 P.O. Box 13
 PORTOLA, CALIFORNIA



NOTES

BASIS OF BEARING IS TAKEN FROM THAT CERTAIN MAP FILED IN BOOK 4 OF RECORD OF SURVEYS AT PAGE 2 PLUMAS COUNTY RECORDS.

ACCESS TO THESE PARCELS IS OVER U.S. FOREST SERVICE ROADS.

LEGEND

- FND 1/2" OR 3/4" IP TAGGED L.S. 3297 ●
- SET 1/2" OR 3/4" IP TAGGED L.S. 3297 ○
- CENTERLINE ROAD EASEMENT ———
- COMPUTED CORNER ———
- WATERCOURSE ———

