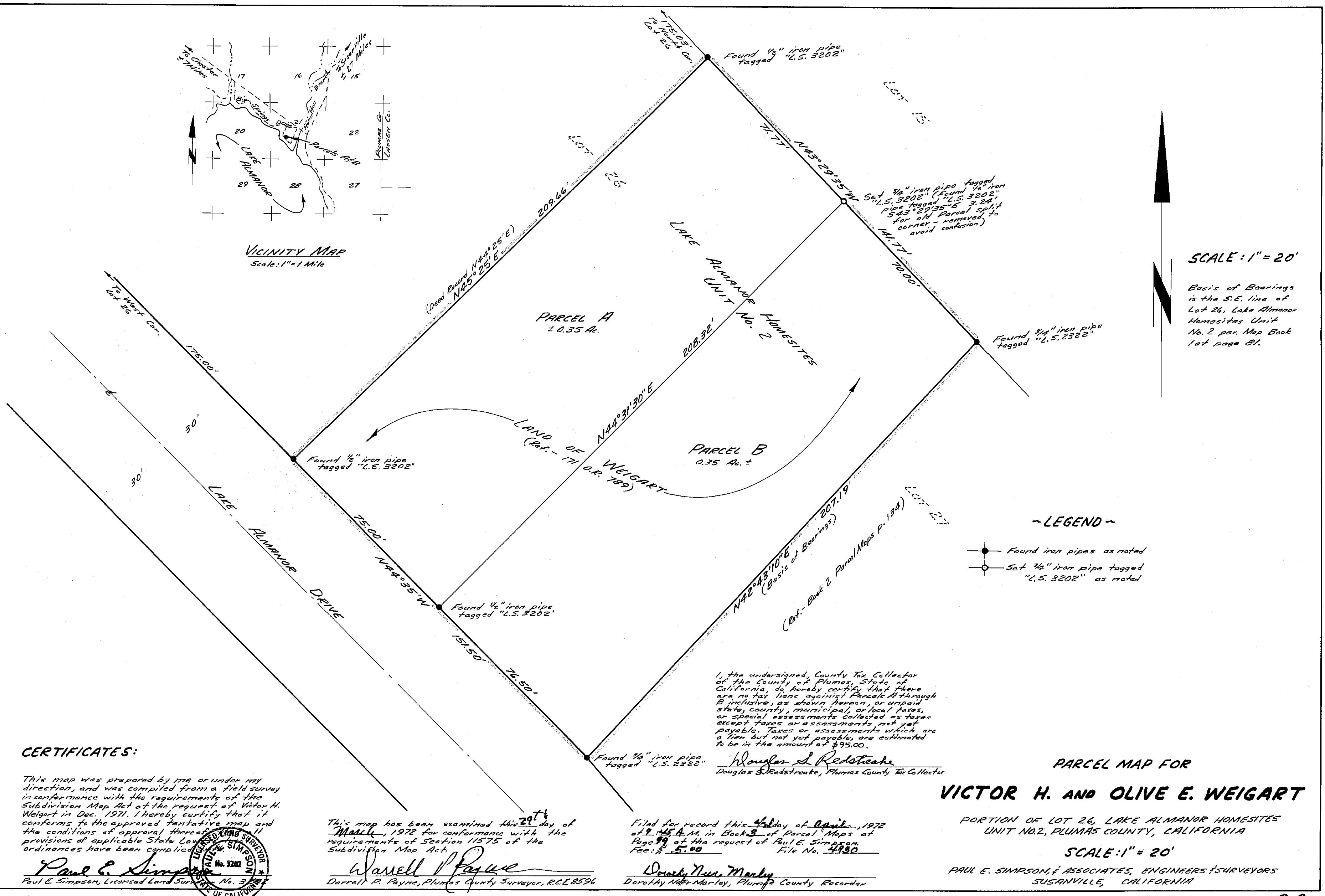


VICINITY MAP
Scale: 1" = 1 Mile



SCALE: 1" = 20'

Basis of Bearings is the S.E. line of Lot 26, Lake Almanor Homesteads Unit No. 2 per Map Book 1st page 81.

~ LEGEND ~

- Found iron pipes as noted
- Set 3/4" iron pipe tagged "L.S. 3202" as noted

I, the undersigned, County Tax Collector of the County of Plumas, State of California, do hereby certify that there are no tax liens against Parcels A through B inclusive, as shown hereon, or unpaid state, county, municipal, or local taxes, or special assessments collected as taxes except taxes or assessments not yet payable. Taxes or assessments which are a lien but not yet payable, are estimated to be in the amount of \$95.00.

Douglas S. Redstroake
Douglas S. Redstroake, Plumas County Tax Collector

PARCEL MAP FOR

VICTOR H. AND OLIVE E. WEIGART

PORTION OF LOT 26, LAKE ALMANOR HOMESITES UNIT NO. 2, PLUMAS COUNTY, CALIFORNIA

SCALE: 1" = 20'

PAUL E. SIMPSON & ASSOCIATES, ENGINEERS & SURVEYORS
SUSANVILLE, CALIFORNIA

CERTIFICATES:

This map was prepared by me or under my direction, and was compiled from a field survey in conformance with the requirements of the Subdivision Map Act at the request of Victor H. Weigart in Dec. 1971. I hereby certify that it conforms to the approved tentative map and the conditions of approval thereof. All provisions of applicable State Law and all ordinances have been complied with.

Paul E. Simpson
Paul E. Simpson, Licensed Land Surveyor, No. 3202
STATE OF CALIFORNIA

This map has been examined this 29th day of March, 1972 for conformance with the requirements of Section 11575 of the Subdivision Map Act.

Warrell Payne
Darrell P. Payne, Plumas County Surveyor, R.C.E. 8596

Filed for record this 4th day of April, 1972 at 2:45 P.M. in Book 3 of Parcel Maps at Page 89 at the request of Paul E. Simpson. Fee: \$ 5.00 File No. 4930

Dorothy Neer Marley
Dorothy Neer Marley, Plumas County Recorder