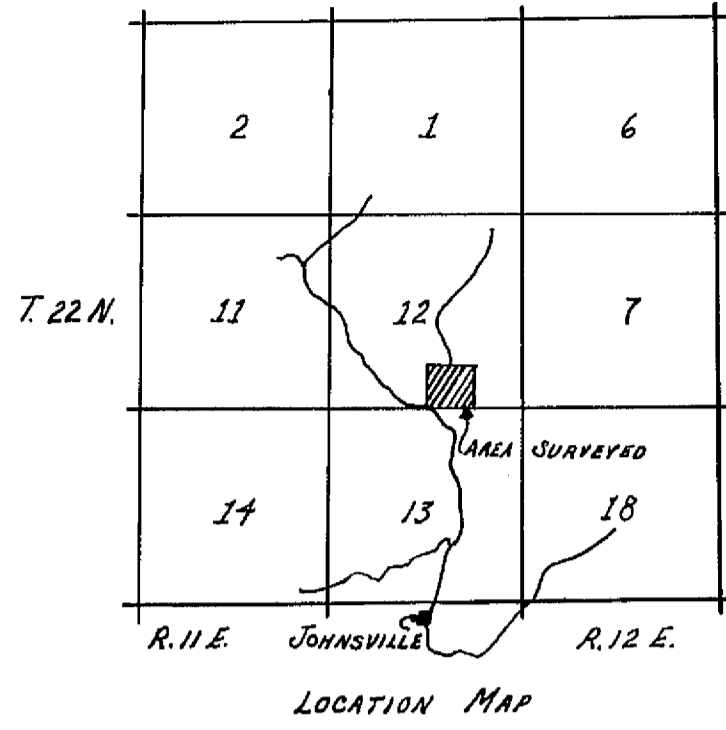


I THE UNDERSIGNED COUNTY TAX COLLECTOR OF THE COUNTY OF PLUMAS, STATE OF CALIFORNIA, DO HEREBY CERTIFY THAT THERE ARE NO TAX LIENS AGAINST PARCELS 1 THROUGH 4 INCLUSIVE, AS SHOWN HEREON, OR UNPAID STATE, COUNTY, MUNICIPAL, OR LOCAL TAXES, OR SPECIAL ASSESSMENTS COLLECTED AS TAXES, EXCEPT TAXES OR ASSESSMENTS NOT YET PAYABLE. TAXES OR ASSESSMENTS WHICH ARE A LIEN, BUT NOT YET PAYABLE ARE ESTIMATED TO BE IN THE AMOUNT OF NONE.

Douglas S. Redstreak
 DOUGLAS S. REDSTREAK
 PLUMAS COUNTY TAX COLLECTOR



SURVEYOR'S CERTIFICATE

THIS MAP WAS PREPARED BY ME OR UNDER MY DIRECTION AND IS BASED UPON A FIELD SURVEY IN CONFORMANCE WITH THE REQUIREMENTS OF THE SUBDIVISION MAP ACT AT THE REQUEST OF B. J. PEARSON IN JULY 1971. I HEREBY CERTIFY THAT IT CONFORMS TO THE APPROVED TENTATIVE MAP AND THE CONDITIONS OF APPROVAL THEREOF, AND THAT ALL PROVISIONS OF APPLICABLE STATE LAW AND LOCAL ORDINANCES HAVE BEEN COMPLIED WITH.

Gerald C. Henderson
 GERALD C. HENDERSON L.S. 3297

COUNTY SURVEYOR'S CERTIFICATE

THIS MAP HAS BEEN EXAMINED FOR CONFORMANCE WITH THE REQUIREMENTS OF SECTION 11575 OF THE SUBDIVISION MAP ACT THIS 11th DAY OF Feb. 1972.

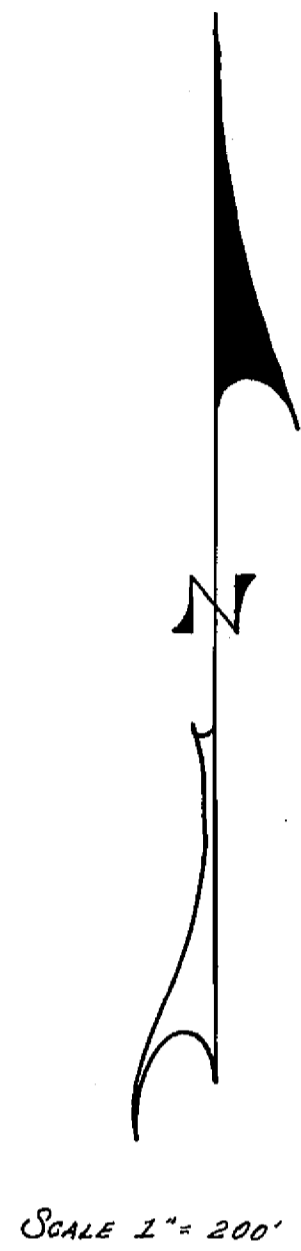
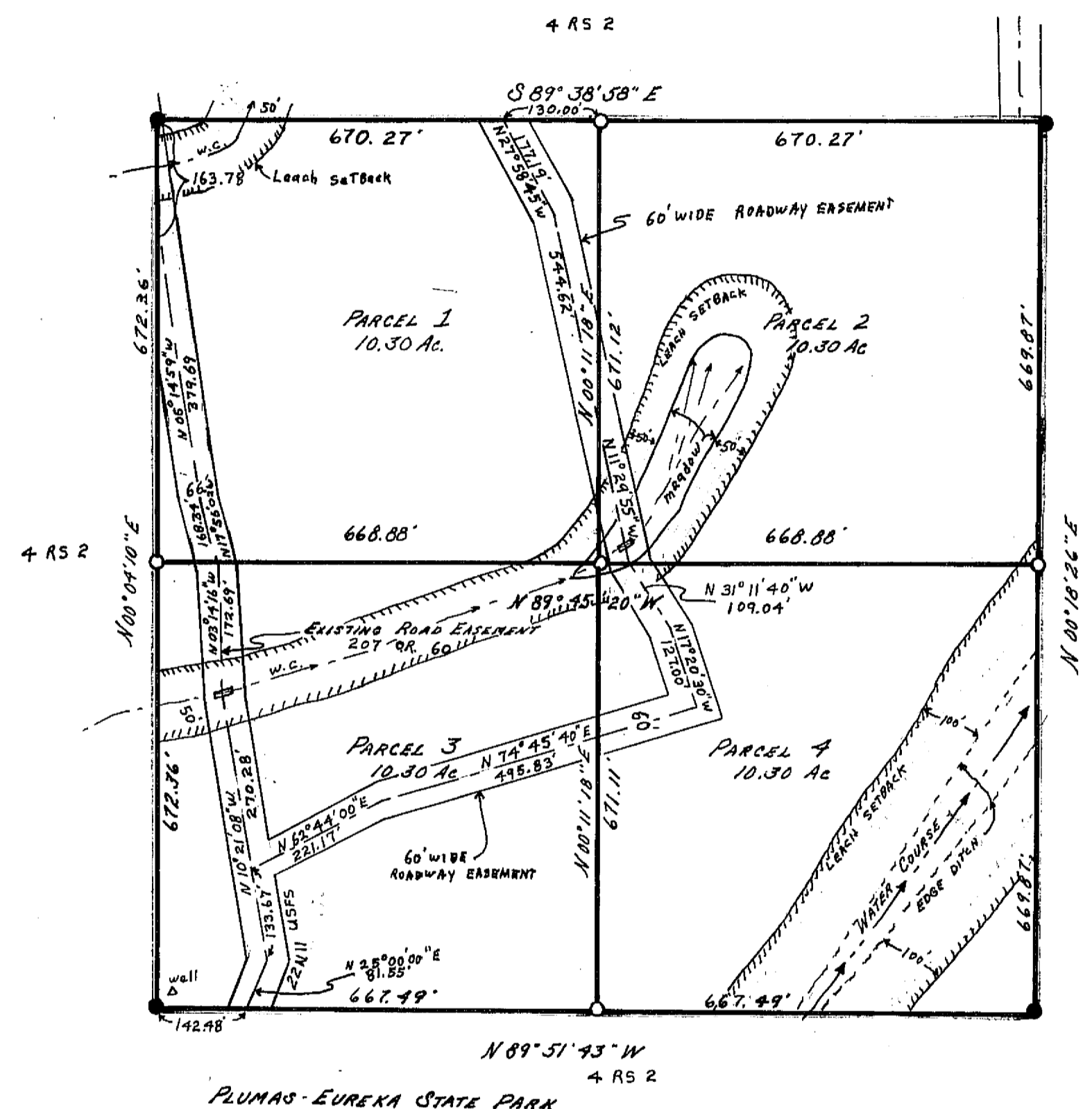
Darrell P. Payne
 DARRELL P. PAYNE R.C.E. 0596

COUNTY RECORDER'S CERTIFICATE

FILED THIS 10th DAY OF Feb., 1972, AT 11:30 A.M., IN BOOK 3 OF PARCEL MAPS AT PAGE 92 AT THE REQUEST OF GERALD C. HENDERSON.

FEE 5.00
 RECORDING No. 4164
Dorothy Neese Masley
 COUNTY RECORDER

PARCEL MAP
 OF A SUBDIVISION INTO FOUR PARTS
 B. J. PEARSON FOR JULY 1971
 S.W. 1/4 OF S.E. 1/4 OF SECTION 12
 T. 22 N., R. 11 E., M.D.M.
 PLUMAS COUNTY, CALIFORNIA



LEGEND

- END 1/2" OR 3/4" IP TAGGED L.S. 3297 ●
- SET 1/2" OR 3/4" IP TAGGED L.S. 3297 ○
- CENTERLINE ROAD EASEMENT ———
- WATERCOURSE ———
- ENGINEERED CULVERTS ———

NOTES

- BASIS OF BEARING IS TAKEN FROM THAT CERTAIN MAP FILED IN BOOK 4 OF RECORD OF SURVEYS AT PAGE 2 IN PLUMAS COUNTY RECORDER'S OFFICE.
- ACCESS TO THESE PARCELS IS OVER U.S. FOREST SERVICE ROADS.

GERALD C. HENDERSON
 LICENSED LAND SURVEYOR
 P.O. Box 13
 PORTOLA, CALIFORNIA