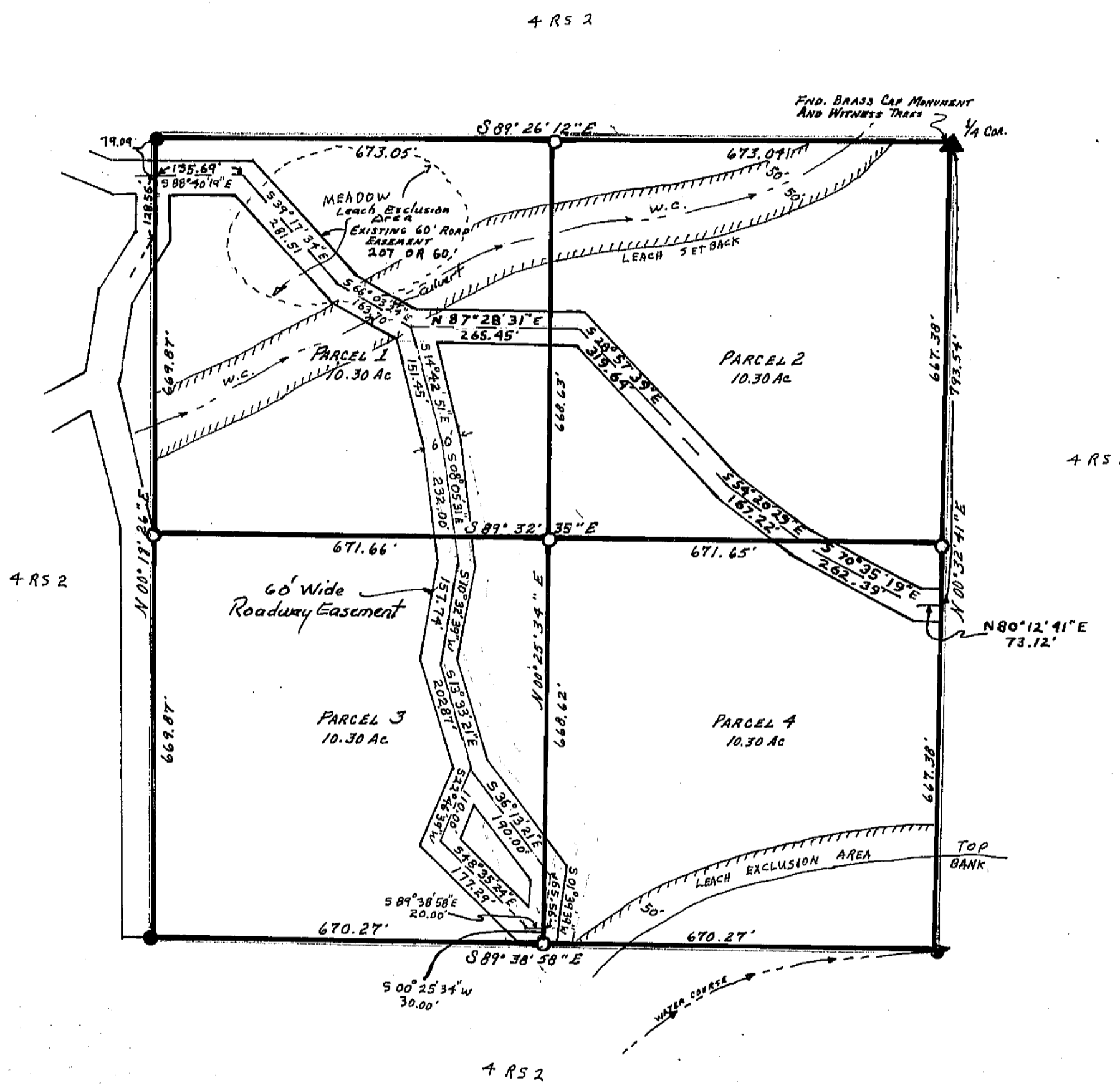
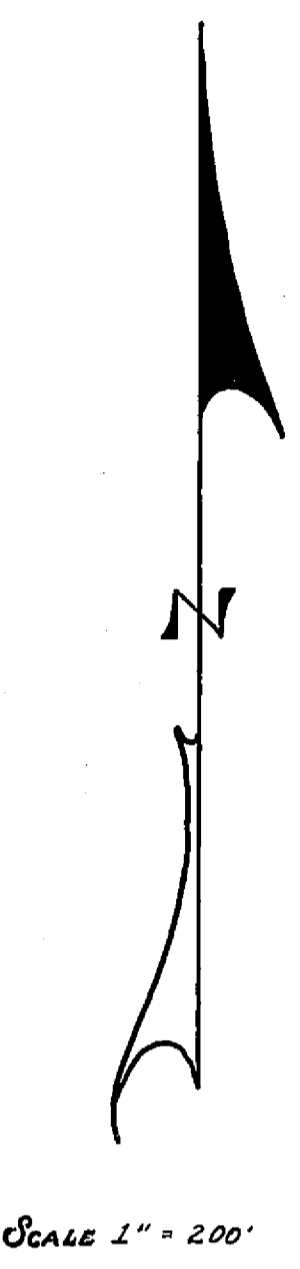
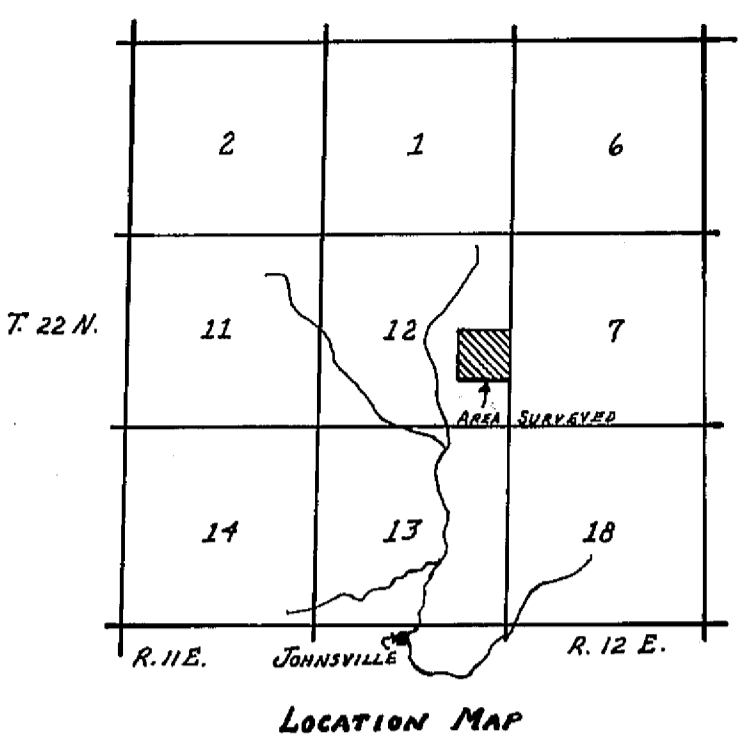


I THE UNDERSIGNED COUNTY TAX COLLECTOR OF THE COUNTY OF PLUMAS, STATE OF CALIFORNIA, DO HEREBY CERTIFY THAT THERE ARE NO TAX LIENS AGAINST PARCELS 1 THROUGH 4 INCLUSIVE, AS SHOWN HEREON, OR UNPAID STATE, COUNTY, MUNICIPAL, OR LOCAL TAXES, OR SPECIAL ASSESSMENTS COLLECTED AS TAXES EXCEPT TAXES OR ASSESSMENTS NOT YET PAYABLE. TAXES OR ASSESSMENTS WHICH ARE A LIEN BUT NOT YET PAYABLE ARE ESTIMATED TO BE IN THE AMOUNT OF NONE

*Douglas S. Reostreake*  
 DOUGLAS S. REOSTREAKE  
 PLUMAS COUNTY TAX COLLECTOR



**SURVEYOR'S CERTIFICATE**

THIS MAP WAS PREPARED BY ME OR UNDER MY DIRECTION AND IS BASED UPON A FIELD SURVEY IN CONFORMANCE WITH THE REQUIREMENTS OF THE SUBDIVISION MAP ACT AT THE REQUEST OF D. RIFE IN JULY 1971. I HEREBY CERTIFY THAT IT CONFORMS TO THE APPROVED TENTATIVE MAP AND THE CONDITIONS OF APPROVAL THEREOF, AND THAT ALL PROVISIONS OF APPLICABLE STATE LAW AND LOCAL ORDINANCES HAVE BEEN COMPLIED WITH.

*Gerald C. Henderson*  
 GERALD C. HENDERSON L.S. 3297

**COUNTY SURVEYOR'S CERTIFICATE**

THIS MAP HAS BEEN EXAMINED FOR CONFORMANCE WITH THE REQUIREMENTS OF SECTION 11575 OF THE SUBDIVISION MAP ACT THIS 20<sup>TH</sup> DAY OF JANUARY 1972.

*Darrell P. Payne*  
 DARRELL P. PAYNE R.C.E. 8596

**COUNTY RECORDER'S CERTIFICATE**

FILED THIS 20<sup>TH</sup> DAY OF JANUARY 1972, AT 2:45 P.M., IN BOOK 3 OF PARCEL MAPS AT PAGE 87, AT THE REQUEST OF GERALD C. HENDERSON.

FEE \$5.00  
 RECORDING No 3902  
*Dorothy Marie Maskey*  
 COUNTY RECORDER

**PARCEL MAP**  
 OF A SUBDIVISION INTO FOUR PARTS  
 FOR  
 D. RIFE JULY 1971  
 N.E. 1/4 OF S.E. 1/4 OF SECTION 12  
 T. 22 N., R. 11 E., M.D.M.  
 PLUMAS COUNTY, CALIFORNIA

- LEGEND**
- FIND 1/2" OR 3/4" I.P. TAGGED L.S. 3297 ●
  - SET 1/2" OR 3/4" I.P. TAGGED L.S. 3297 ○
  - FIND BRASS CAP MONUMENT ▲
  - CENTERLINE ROAD EASEMENT - - - - -
  - WATERCOURSE ~~~~~

- NOTES**
- BASIS OF BEARING IS TAKEN FROM THAT CERTAIN MAP FILED IN BOOK 4 OF RECORD OF SURVEYS AT PAGE 2 PLUMAS COUNTY RECORDS.
  - ACCESS TO THESE PARCELS IS OVER U.S. FOREST SERVICE ROADS.

GERALD C. HENDERSON  
 LICENSED LAND SURVEYOR  
 P.O. Box 13  
 PORTOLA, CALIFORNIA