

### RECORDER'S CERTIFICATE

Filed this 10th day of December, 1971, at 4:45 P.M. in Book 3 of Parcel Maps at Page 65 at the request of James F. Flanagan. Recording No. 3375

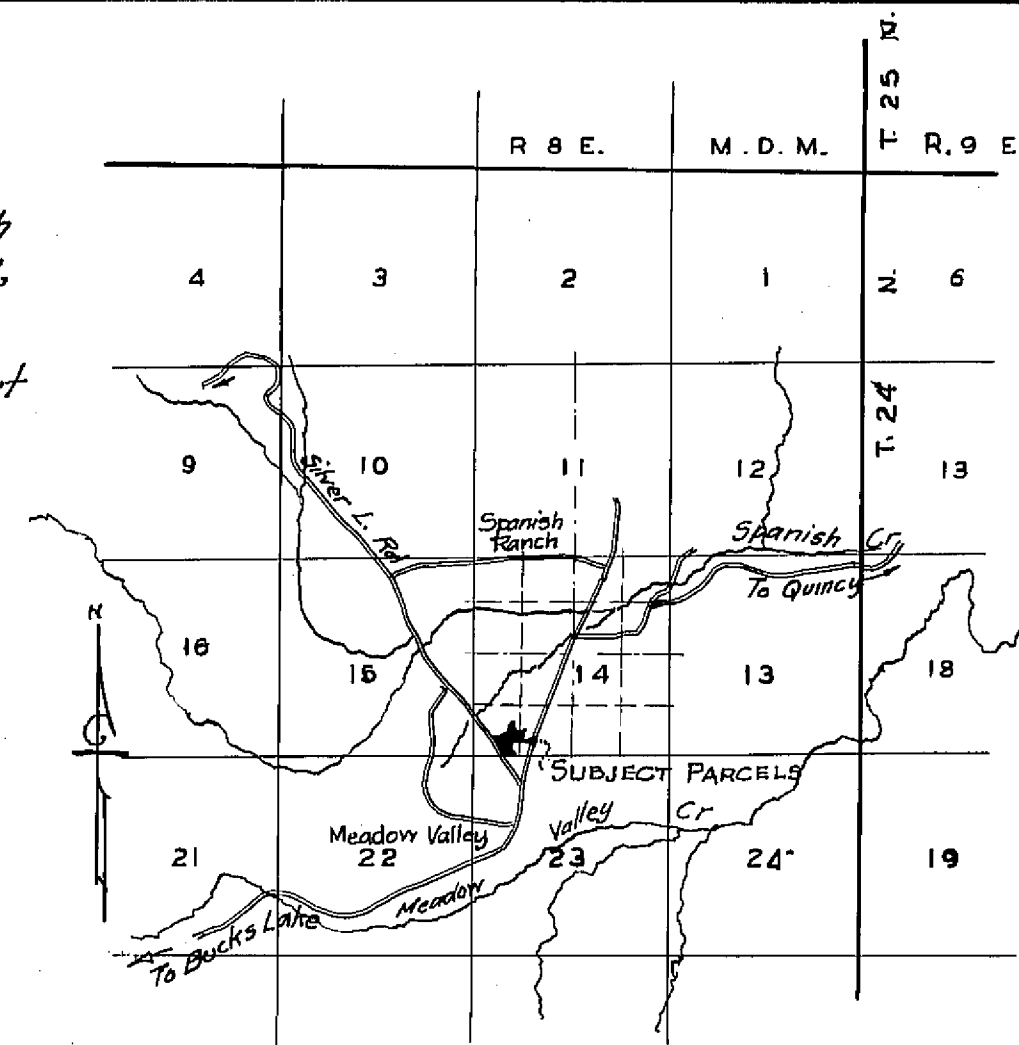
Fee \$ 5.00

*Dorothy Nease Marley*  
County Recorder  
By *Carol Andrew Thomas*  
Deputy

### TAX COLLECTOR'S CERTIFICATE

I, the undersigned, County Tax Collector of the County of Plumas, State of California, do hereby certify that there are no tax liens against Parcels One through 3 inclusive, as shown hereon, or unpaid state, county, municipal, or local taxes, or special assessments collected as taxes, except taxes or assessments not yet payable. Taxes or assessments which are a lien but not yet payable, are estimated to be in the amount of NONE

*Douglas S. Redstreake*  
DOUGLAS S. REDSTREAKE  
Plumas County Tax Collector



LOCATION MAP  
SCALE: 1 IN = 1 MILE

### LEGEND

- † Set 3/4" Iron pipe marked R.C.E. 292
- Found point as indicated
- Computed point location
- Found Section Corner

NOTE: All measured bearings and distances are the same as record bearings and distances for cited maps and records, unless otherwise noted.

### SURVEYOR'S CERTIFICATE

This map was prepared by me and is based upon a field survey and compiled from record data in conformance with the requirements of the subdivision Map Act at the request of CHARLES H. BAHEM in October 1971. I hereby certify that it conforms to the approved Tentative Map and the conditions of approval thereof, that all provisions of applicable state law and local ordinances have been complied with.

*James F. Flanagan*  
James F. Flanagan, R.C.E. 292

### COUNTY ENGINEER'S CERTIFICATE

This map has been examined for conformance with the requirements of Section 11575 of the Subdivision Map Act this 10th day of December, 1971

*Darrell P. Payne*  
Darrell P. Payne R.C.E. 8596

# PARCEL MAP

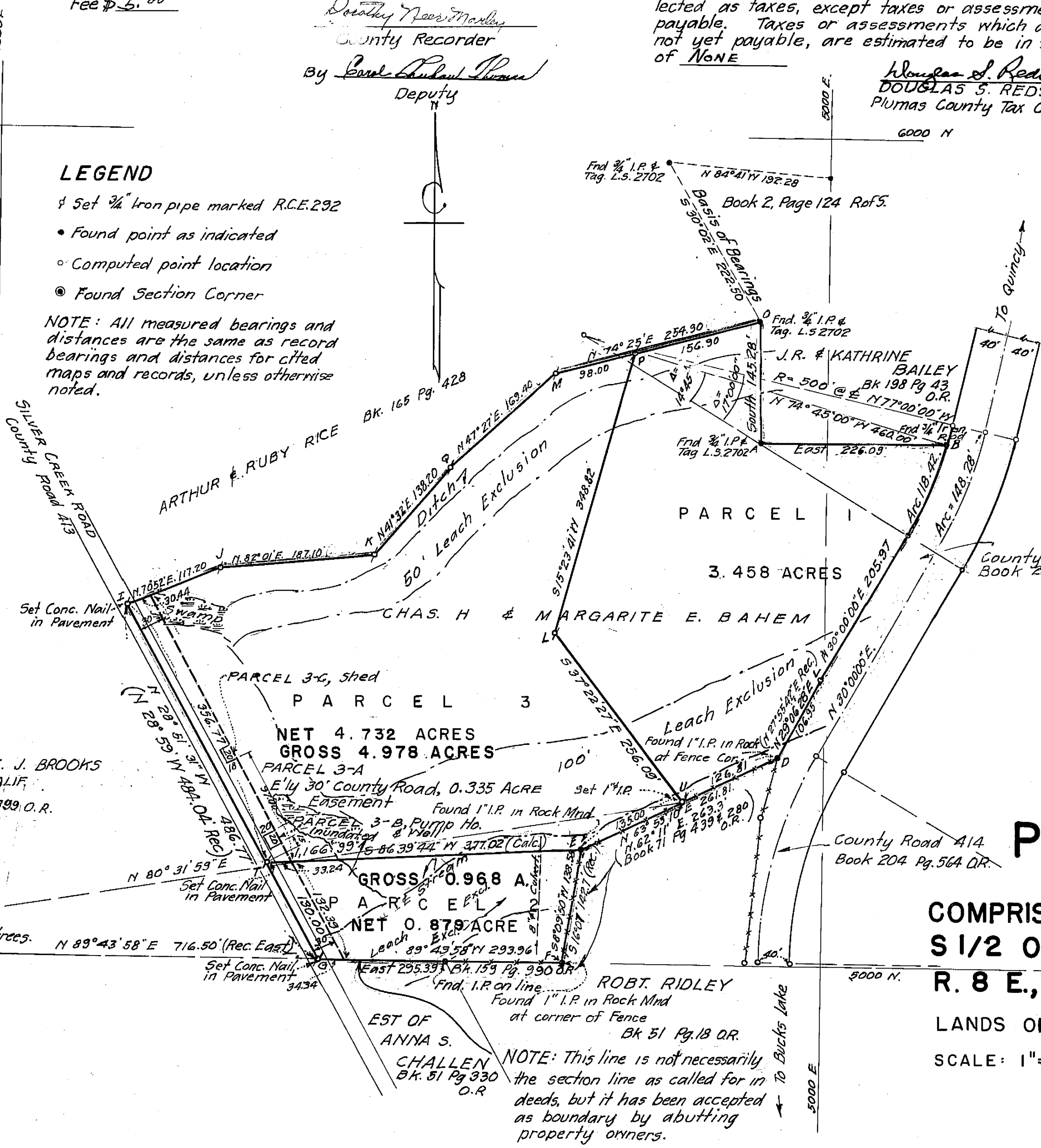
COMPRISING THREE PARCELS IN THE  
S 1/2 OF SW 1/4 OF SECTION 14, T. 24 N.,  
R. 8 E., M. D. M., MEADOW VALLEY, CALIF.

LANDS OF CHAS. H. AND MARGARITE E. BAHEM.

SCALE: 1" = 100'

SURVEYED OCT. 1971

JAMES F. FLANAGAN, R.C.E. 292  
QUINCY, CALIFORNIA.



NOTE: This line is not necessarily the section line as called for in deeds, but it has been accepted as boundary by abutting property owners.