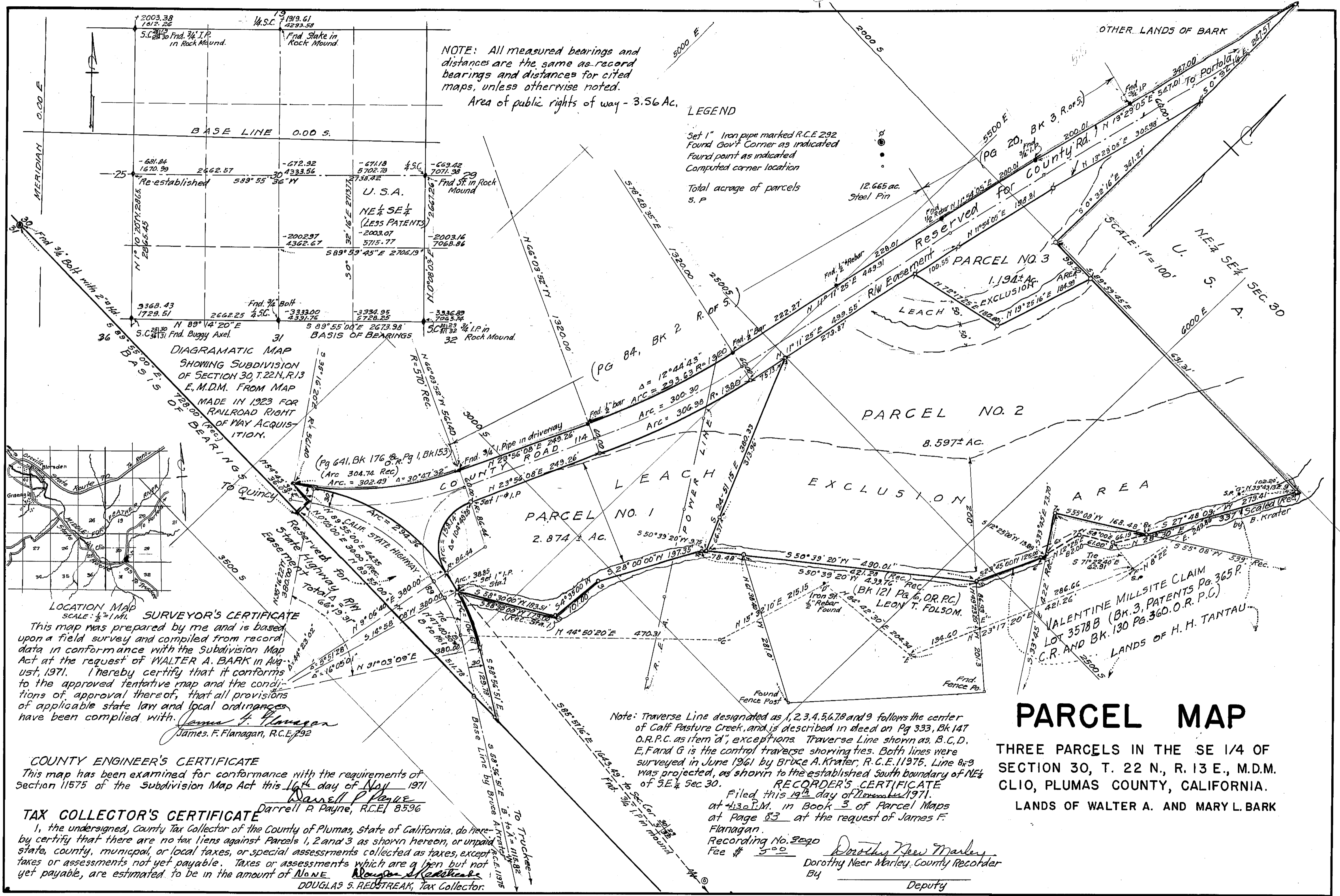


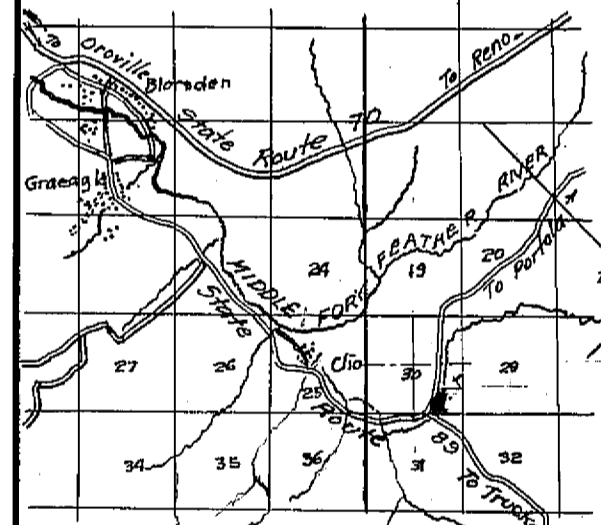
NOTE: All measured bearings and distances are the same as record bearings and distances for cited maps, unless otherwise noted.
 Area of public rights of way - 3.56 Ac.

LEGEND

Set 1" Iron pipe marked R.C.E. 292
 Found Gov't Corner as indicated
 Found point as indicated
 Computed corner location
 Total acreage of parcels
 s. p. 12.665 ac.
 Steel Pin



DIAGRAMATIC MAP
 SHOWING SUBDIVISION
 OF SECTION 30, T. 22 N., R. 13
 E., M.D.M. FROM MAP
 MADE IN 1923 FOR
 RAILROAD RIGHT
 OF WAY ACQUISITION.



LOCATION MAP

SURVEYOR'S CERTIFICATE

This map was prepared by me and is based upon a field survey and compiled from record data in conformance with the Subdivision Map Act at the request of WALTER A. BARK in August, 1971. I hereby certify that it conforms to the approved tentative map and the conditions of approval thereof, that all provisions of applicable state law and local ordinances have been complied with.

James F. Flanagan
 James F. Flanagan, R.C.E. 292

COUNTY ENGINEER'S CERTIFICATE

This map has been examined for conformance with the requirements of Section 11575 of the Subdivision Map Act this 16th day of May 1971

Darrell P. Payne
 Darrell P. Payne, R.C.E. 8596

TAX COLLECTOR'S CERTIFICATE

I, the undersigned, County Tax Collector of the County of Plumas, State of California, do hereby certify that there are no tax liens against Parcels 1, 2 and 3 as shown hereon, or unpaid state, county, municipal, or local taxes, or special assessments collected as taxes, except taxes or assessments not yet payable. Taxes or assessments which are a lien but not yet payable, are estimated to be in the amount of NONE

Douglas S. Redstream
 DOUGLAS S. REDSTREAM, Tax Collector.

Note: Traverse Line designated as 1, 2, 3, 4, 5, 6, 7, 8 and 9 follows the center of Calf Pasture Creek, and is described in deed on Pg 333, Bk 147 O.R.P.C. as item 'd', exceptions Traverse Line shown as B, C, D, E, F and G is the control traverse showing ties. Both lines were surveyed in June 1961 by Bruce A. Krater, R.C.E. 11975. Line 8 & 9 was projected, as shown to the established South boundary of NE 1/4 of SE 1/4 Sec 30.

RECORDER'S CERTIFICATE
 Filed this 19th day of November 1971.
 at 4:30 P.M. in Book 3 of Parcel Maps
 at Page 83 at the request of James F. Flanagan.
 Recording No. 8920
 Fee \$ 5.00
Dorothy Neer Marley
 Dorothy Neer Marley, County Recorder
 By _____ Deputy

PARCEL MAP

THREE PARCELS IN THE SE 1/4 OF SECTION 30, T. 22 N., R. 13 E., M.D.M. CLIO, PLUMAS COUNTY, CALIFORNIA. LANDS OF WALTER A. AND MARY L. BARK