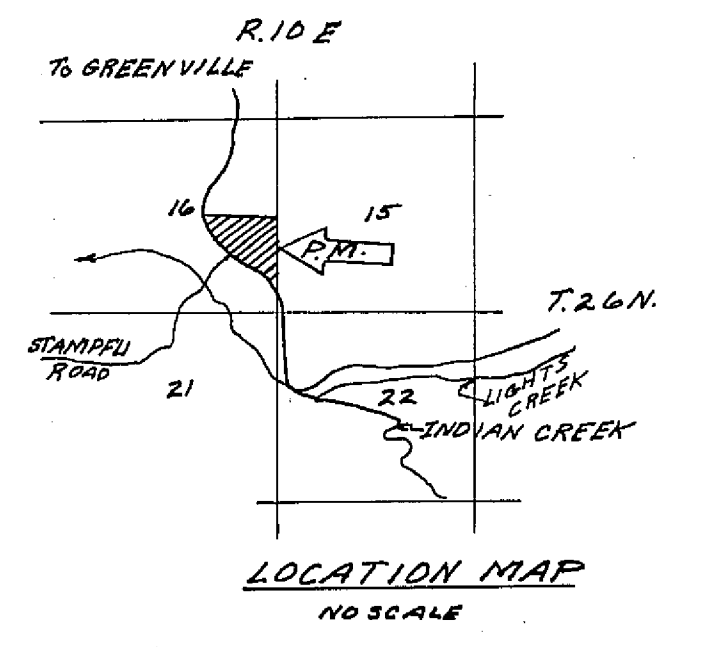


SCALE 1"=200'

Cor. Tree with 2" I.P. & Brass Cap reference point (and re-marked bearing trees) set by B.L.M.

BASIS OF BEARINGS  
NORTH 2635.24'  
NORTH 2432.31'  
2334.48'

2" I.P. (& Bearing tree) set by B.L.M.



LEGEND

- Found Corners as noted
- B.L.M. U. S. Bureau of Land Management
- Set 3/4" Iron Pipe with brass tag stamped "John C. Simpson, R.C.E. 11173"
- Set Nail and Shiner
- Set 1/2" Steel Pin with Plastic Cap stamped "R.C.E. 11173"
- I.P. Iron Pipe
- E- Existing overhead electric line
- O.R. Official Records, Plumas County records
- Bk. Book
- P. Page

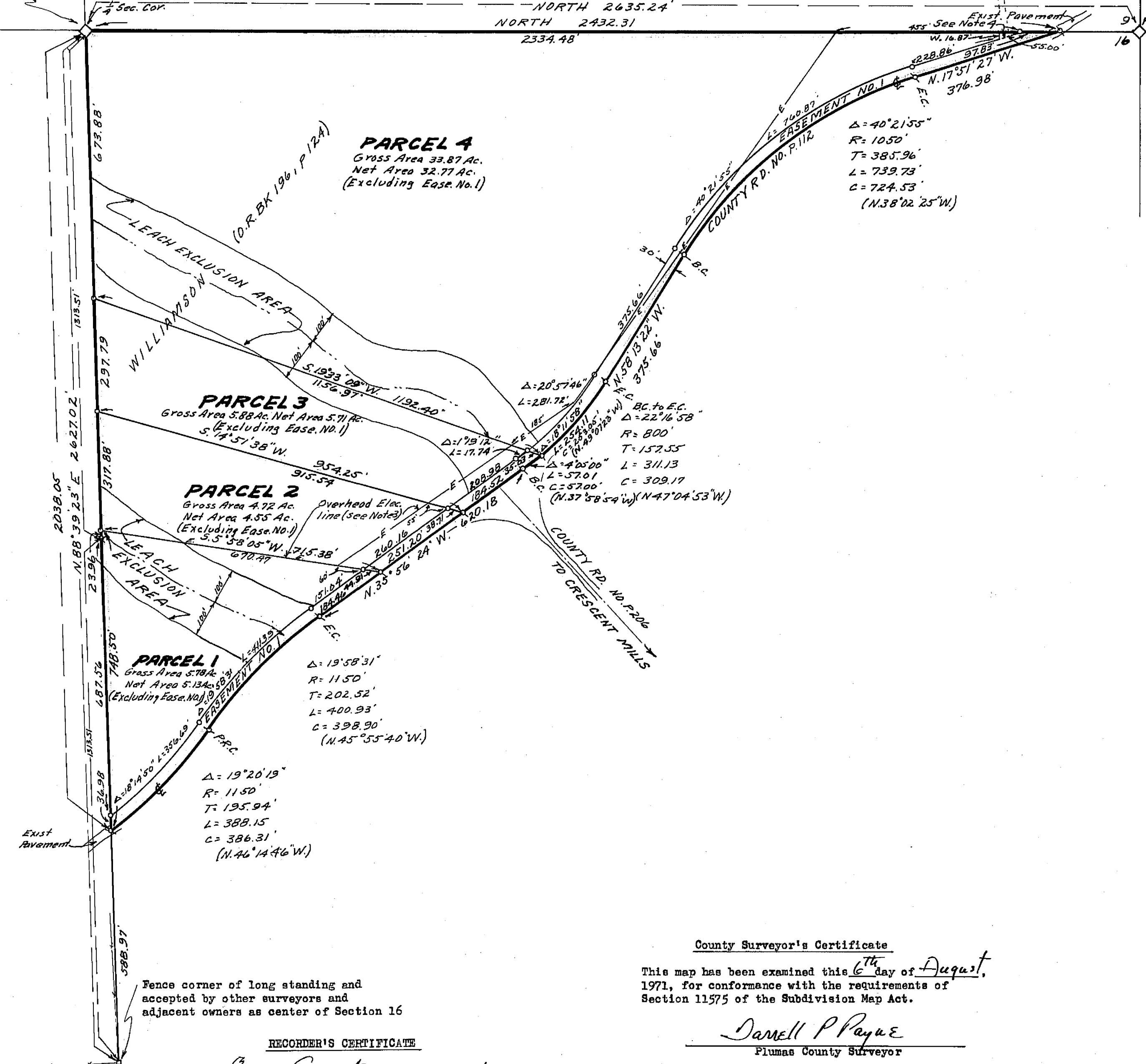
NOTES

- Tentative Parcel Map approved by Plumas County Planning Commission Apr. 26, 1971.
- Easement No. 1 (road right-of-way) to be granted to Plumas County.
- Easement for existing overhead electric line previously granted to Great Western Power Co. (predecessor to Pacific Gas & Electric Co.), Book 48 of Deeds, page 29.
- Additional road easement to accommodate junction of Forest Service road with County Road.

SURVEYOR'S CERTIFICATE

This map was prepared by me or under my direction (and is based upon a field survey) in conformance with the requirements of the Subdivision Map Act at the request of Don Williamson, July 28, 1971. I hereby certify that it conforms to the approved tentative map and the conditions of approval thereof; that all provisions of applicable state law and local ordinances have been complied with.

John C. Simpson  
John C. Simpson  
R.C.E. 11173



County Surveyor's Certificate

This map has been examined this 6<sup>th</sup> day of August, 1971, for conformance with the requirements of Section 11575 of the Subdivision Map Act.

Darrell P Payne  
Plumas County Surveyor

RECORDER'S CERTIFICATE

Filed this 13<sup>th</sup> day of August, 1971, at 9:50 A.M. in Book 3 of Parcel Maps at page 72 at the request of John C. Simpson

Dorothy Neer Marley  
Plumas County Recorder

Fee \$5.00  
File No. 634

# PARCEL MAP OF SUBDIVISION OF FOUR PARCELS

FOR DON WILLIAMSON AND MARGUERITE O. WILLIAMSON RECORD OWNERS

WITHIN SE 1/4, SEC. 16, T.26N, R.10E, MDM. PLUMAS COUNTY-CALIFORNIA

JOHN C. SIMPSON, P.E.  
CIVIL ENGINEER  
QUINCY, CALIFORNIA