

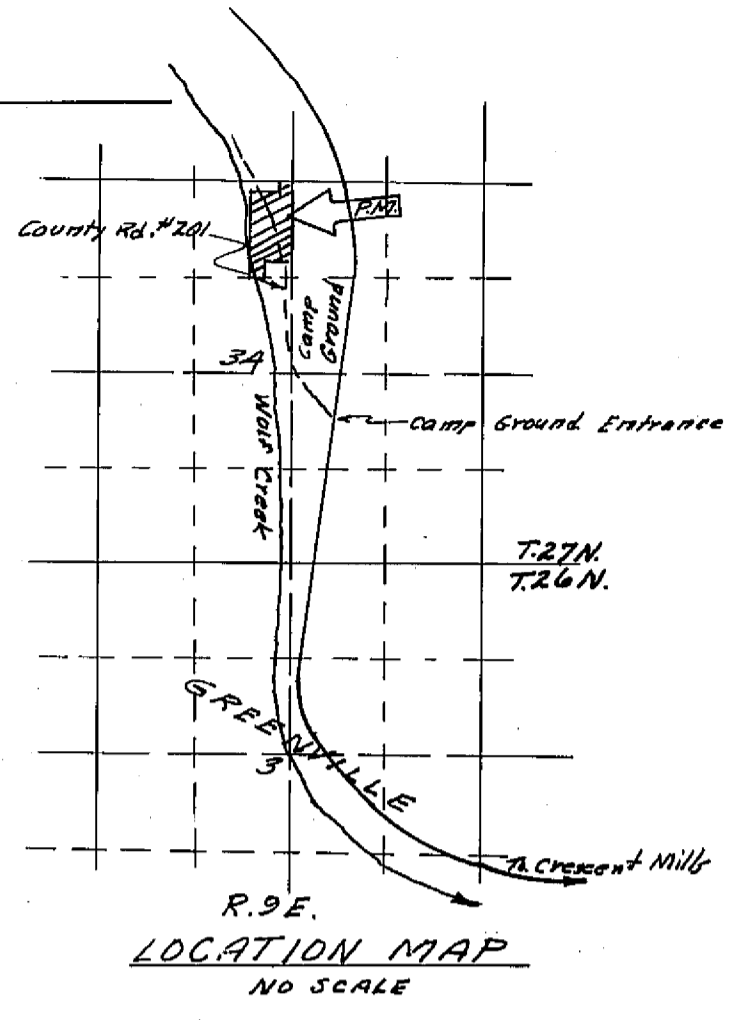
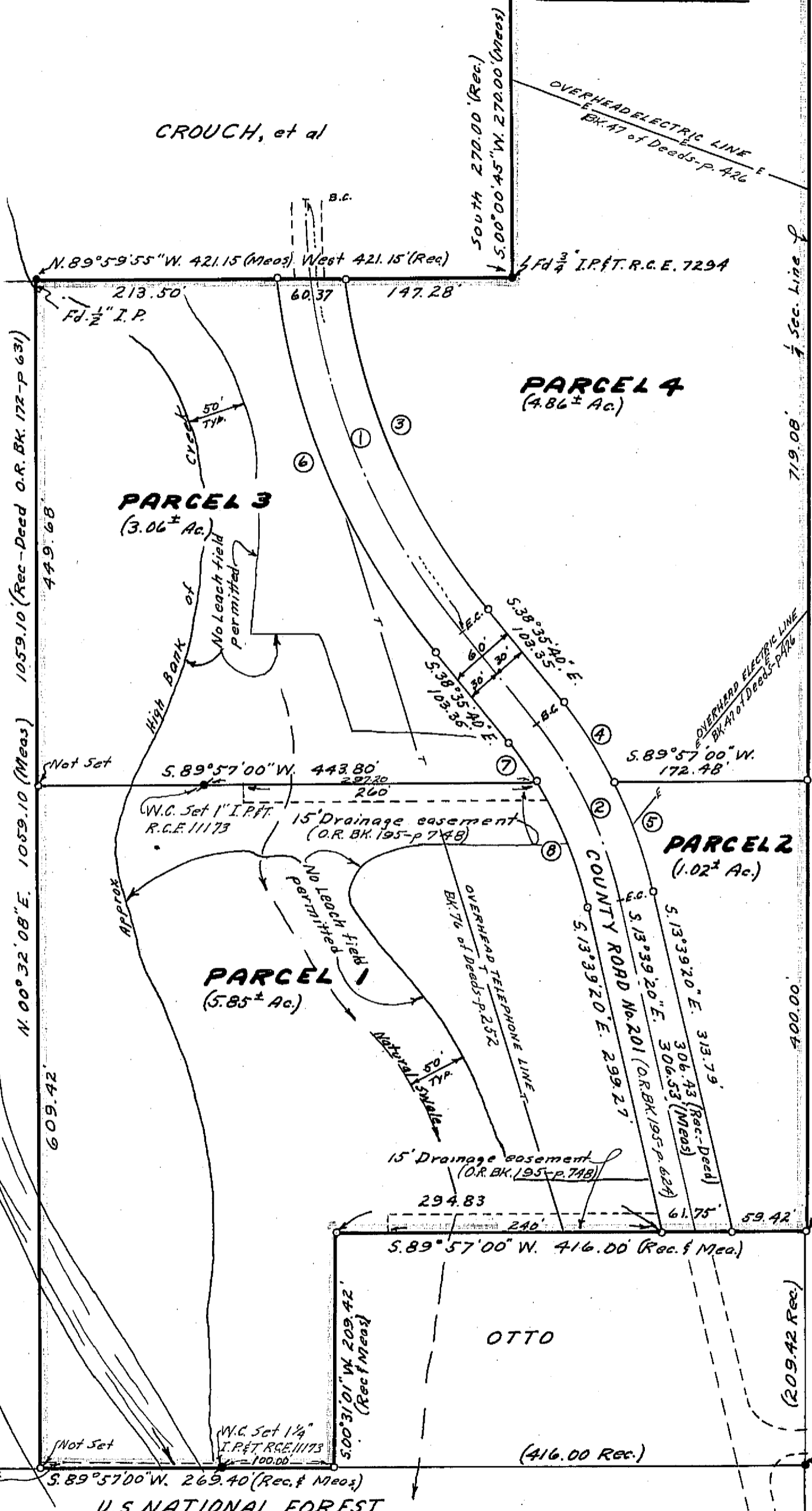
SE 1/4 SW 1/4 U.S. NATIONAL FOREST
 Sec. line of Sec. 27
 Sec. 34

FD 3/4 I.P. & T. R.C.E. 7294
 West 266.28 (Meas) 266.20 (Rec)

SW 1/4 SE 1/4
 FD 1/2 I.P. & T. L.S. 2702
 N 1/4 Con. Sec. 34

CURVE DATA

	Δ	R	T	L	C	Ch. Bearing
①	TOTAL 38°35'45"	615'	215.34'	414.28'	406.49'	S.19°17'48"E.
②	24°56'20"	400'	88.45'	174.09'	172.74'	S.22°07'30"E.
③	31°53'40"	585'	167.16'	325.68'	321.46'	S.22°38'50"E.
④	11°24'16"	430'	42.94'	85.57'	85.45'	S.32°53'32"E.
⑤	13°32'04"	490'	51.02'	101.57'	101.33'	S.20°25'22"E.
⑥	32°31'15"	645'	188.13'	366.10'	361.21'	S.22°20'02"E.
⑦	6°31'48"	370'	21.07'	42.17'	42.15'	S.35°19'46"E.
⑧	18°24'33"	370'	59.95'	118.85'	118.37'	S.22°51'36"E.



LEGEND

- Found monuments as noted
- Set 1/2" Steel Pin with plastic cap stamped "R.C.E. 11173"
- ✱ Set Witness Corner as noted
- FD. Found
- I.P. Iron Pipe
- I.P. & T. Iron Pipe and Tag
- Rec. Record (from deed, record of survey, etc.)
- Meas. Measured
- Ac. Acre

NOTES

1. Tentative parcel map approved by Plumas County Planning Commission April 27, 1970. (See Note 4.)
2. No sewage leach field to be closer than 200 ft. to high water line of Wolf Creek nor closer than 50 ft. to the natural swale shown on map.
3. Drainage side ditch on west side of county road and ditches within drainage easements to natural drainage swale to be constructed by Plumas County Road Dept. (See letter of July 15, 1970, from Plumas County Road Commissioner to Plumas County Planning Commission).
4. A condition of approval of Tentative Parcel Map requires that a restriction be incorporated into conveyances of parcels shown hereon (or by accompanying declaration of restrictions) limiting usage to residential (County Zone "R") and that physical improvements be constructed under limitations similar to those of Flood Plain 2 (FP-2) zoning.

SURVEYOR'S CERTIFICATE

This map was prepared by me or under my direction (and is based upon a field survey) in conformance with the requirements of the Subdivision Map Act at the request of Emily A. Headrick, July 1, 1970. I hereby certify that it conforms to the approved tentative map and the conditions of approval thereof; that all provisions of applicable state law and local ordinances have been complied with.

John C. Simpson
 John C. Simpson
 R.C.E. 11173



PARCEL MAP
 OF
 SUBDIVISION OF FOUR PARCELS
 FOR
 EMILY A. HEADRICK
 RECORD OWNER

WITHIN NE 1/4 NW 1/4, SEC. 34, T. 27N, R. 9E, (M.D.M.)
 PLUMAS COUNTY - CALIFORNIA

JOHN C. SIMPSON - P.E.
 CIVIL ENGINEER
 QUINCY, CALIFORNIA

RECORDER'S CERTIFICATE

Filed this 26th day of August, 1970, at 4:40 P.M. in Book 34 of Parcel Maps at Page 2 at the request of John C. Simpson
Ida Hogan Gronold
 Ida Hogan Gronold
 File No. 1369 Plumas County Recorder

COUNTY SURVEYOR'S CERTIFICATE

This map has been examined this 18th day of August, 1970, for conformance with the requirements of Section 11575 of the Subdivision Map Act.

Darrell P. Payne
 Darrell P. Payne
 Plumas County Surveyor