

NOTES:
 THE BASIS OF BEARING IS THE WEST LINE OF SECTION 13
 GIVEN AS SOUTH 01° 22' 08" EAST ON THAT CERTAIN RECORD
 OF SURVEY MAP FILED JULY 25, 1966 IN BOOK 3 OF RECORD
 OF SURVEYS AT PAGE 72, PLUMAS COUNTY OFFICIAL RECORDS.
 TOTAL ACREAGE - 40.46 ACRES

FOUND 3/4" I.P.
 TAGGED L.S. 2846

FOUND NAIL
 IN CEDAR LOG

PARCEL MAP
 A PORTION OF SECTION 13, T. 22 N.,
 R. 12 E., M. D. B. & M.
 PLUMAS CO., CALIFORNIA

GLENN F. WILLIAMS & ASSOC.
 CARMICHAEL, CALIFORNIA

SCALE 1"=100'

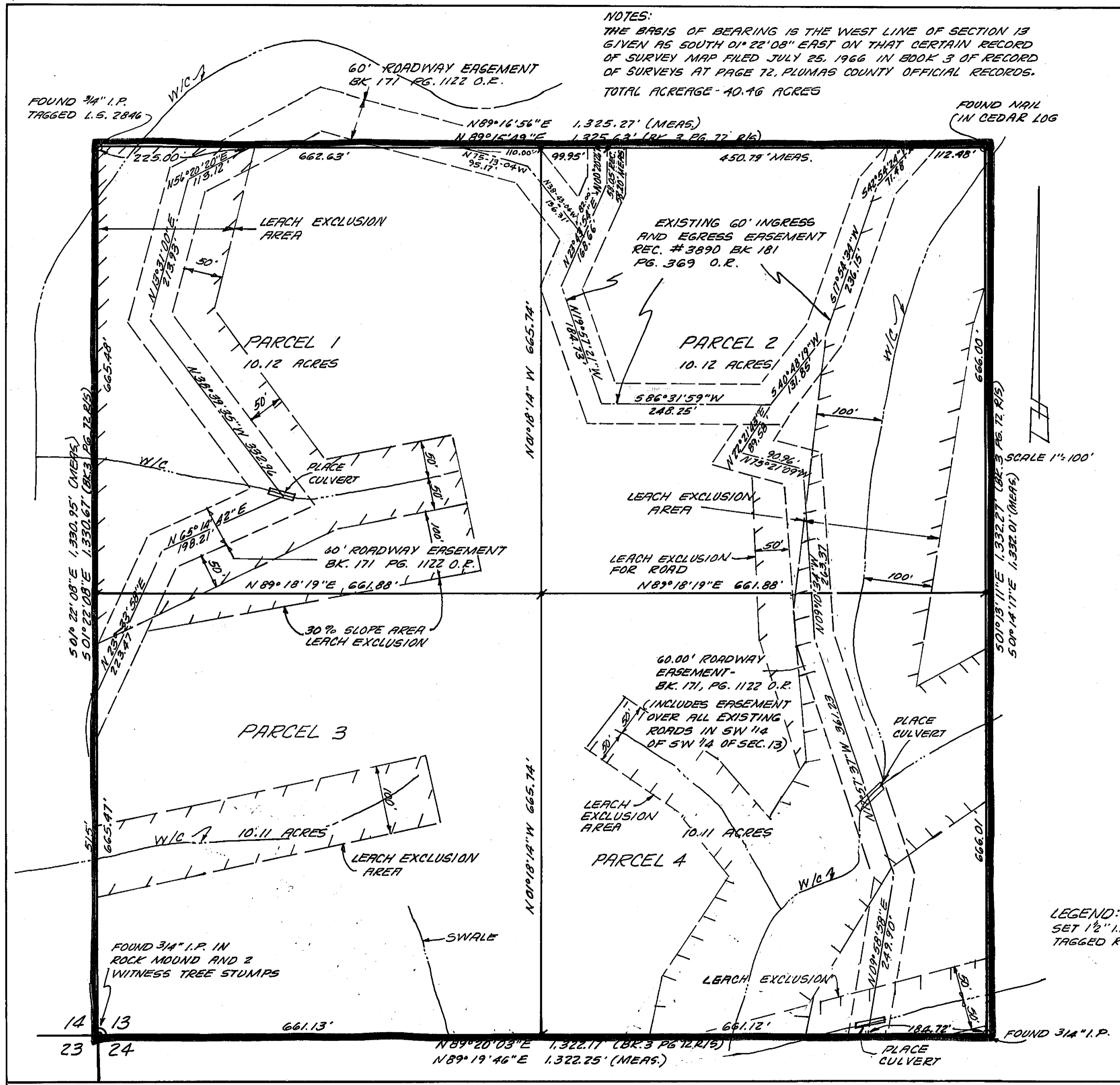
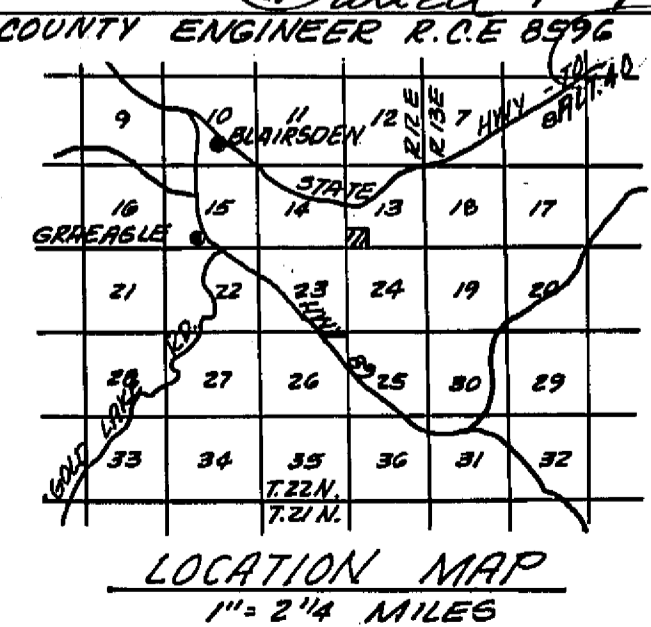
I, THE UNDERSIGNED, COUNTY TAX COLLECTOR OF THE COUNTY
 OF PLUMAS, STATE OF CALIFORNIA, DO HEREBY CERTIFY THAT
 THERE ARE NO TAX LIENS AGAINST PARCEL 1 THROUGH 4
 INCLUSIVE, AS SHOWN HEREON, OR UNPAID STATE, COUNTY,
 MUNICIPAL, OR LOCAL TAXES, OR SPECIAL ASSESSMENT
 COLLECTED AS TAXES, EXCEPT TAXES OR ASSESSMENTS NOT
 YET PAYABLE, TAXES OR ASSESSMENTS WHICH ARE A LIEN
 BUT NOT YET PAYABLE, ARE ESTIMATED TO BE IN THE
 AMOUNT OF \$270.25
 Douglas S. Redstreak
 DOUGLAS S. REDSTREAKE, PLUMAS CO., TAX COLLECTOR.

SURVEYOR'S CERTIFICATE
 THIS MAP WAS PREPARED BY ME OR UNDER MY DIRECTION
 AND IS BASED UPON A FIELD SURVEY IN CONFORMANCE
 WITH THE REQUIREMENTS OF THE SUBDIVISION MAP ACT AT
 THE REQUEST OF A. VAN ALSTINE IN DECEMBER 1971. I HEREBY
 CERTIFY THAT IT CONFORMS TO THE APPROVED TENTATIVE MAP
 AND THE CONDITIONS OF APPROVAL THEREOF, AND THAT ALL
 PROVISIONS OF APPLICABLE STATE LAW AND LOCAL ORDINANCES
 HAVE BEEN COMPLIED WITH.
 Glenn F. Williams
 GLENN F. WILLIAMS R.C.E. 9962

RECORDERS CERTIFICATE
 FILED THIS 27th DAY OF September 1972, AT 2:00 P.M., IN
 BOOK 3 OF PARCEL MAPS AT PAGE 126 AT THE REQUEST
 OF GLENN F. WILLIAMS RECORDING NO. 1335
 FEE \$ 5.00
 Dorothy New Marley
 COUNTY RECORDER

COUNTY ENGINEER'S CERTIFICATE
 THIS MAP HAS BEEN EXAMINED FOR CONFORMANCE WITH
 THE REQUIREMENTS OF SECTION 11575 OF THE SUBDIVISION MAP
 ACT THIS 12th DAY OF Sept. 1972.
 Danell P. Payne
 COUNTY ENGINEER R.C.E. 8996

LEGEND:
 SET 1/2" I.P.
 TAGGED R.C.E. 9962



3 PM 126