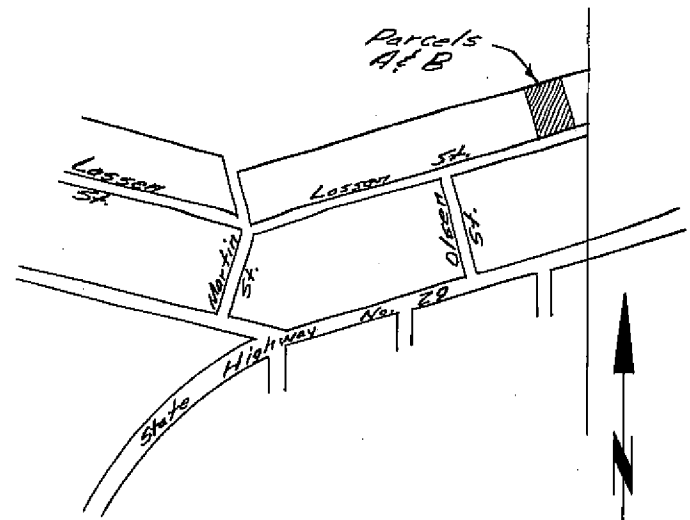
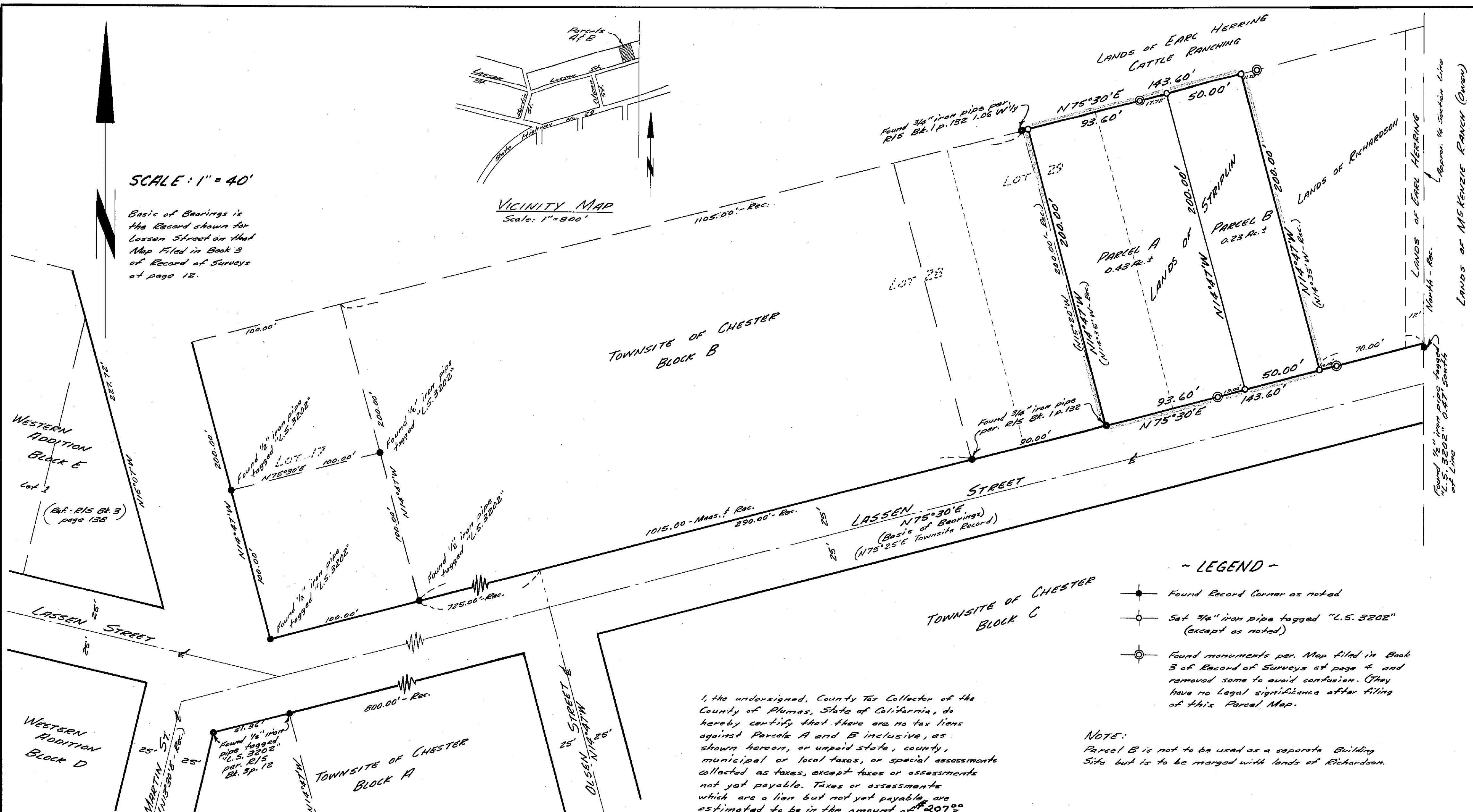


SCALE: 1" = 40'

Basis of Bearings is the Record shown for Lassen Street on that Map Filed in Book 3 of Record of Surveys of page 12.



VICINITY MAP Scale: 1"=800'



- LEGEND -

- Found Record Corner as noted
- Set 3/4" iron pipe tagged "L.S. 3202" (except as noted)
- ⊙ Found monuments per Map filed in Book 3 of Record of Surveys at page 4 and removed some to avoid confusion. (They have no legal significance after filing of this Parcel Map.)

NOTE: Parcel B is not to be used as a separate Building Site but is to be merged with lands of Richardson.

I, the undersigned, County Tax Collector of the County of Plumas, State of California, do hereby certify that there are no tax liens against Parcels A and B inclusive, as shown hereon, or unpaid state, county, municipal or local taxes, or special assessments collected as taxes, except taxes or assessments not yet payable. Taxes or assessments which are a lien but not yet payable, are estimated to be in the amount of \$207.00.

Douglas S. Redstreak Douglas S. Redstreak, Plumas County Tax Collector

PARCEL MAP FOR ETHEL D. STRIPLIN

IN SECTION 5, T.28N, R.7E, M.D.B. 1/4M. AND PORTION OF LOT 29, BLOCK B, TOWN OF CHESTER PLUMAS COUNTY, CALIFORNIA

SCALE: 1" = 40'

PAUL E. SIMPSON & ASSOCIATES, ENGINEERS & SURVEYORS SUSANVILLE, CALIFORNIA

CERTIFICATES:

This map was prepared by me or under my direction, and was compiled from a field survey in conformance with the requirements of the Subdivision Map Act at the request of Ethel Striplin in Oct. 1971. I hereby certify that it conforms to the approved tentative map and the conditions of approval thereof; that all provisions of applicable state laws and local ordinances have been...

Paul E. Simpson, Licensed Land Surveyor No. 3202



This map has been examined this 7th day of August, 1972 for conformance with the requirements of Section 11575 of the Subdivision Map Act.

Darrell P. Payne, R.C.E. 6596, Plumas County Surveyor

Filed for record this 20th day of September, 1972 at 8:45 A.M. in Book 3 of Parcel Maps at Page 124 at the request of Paul E. Simpson Fee: \$5.00 File No: 1219

Dorothy Near Marley, Plumas County Recorder