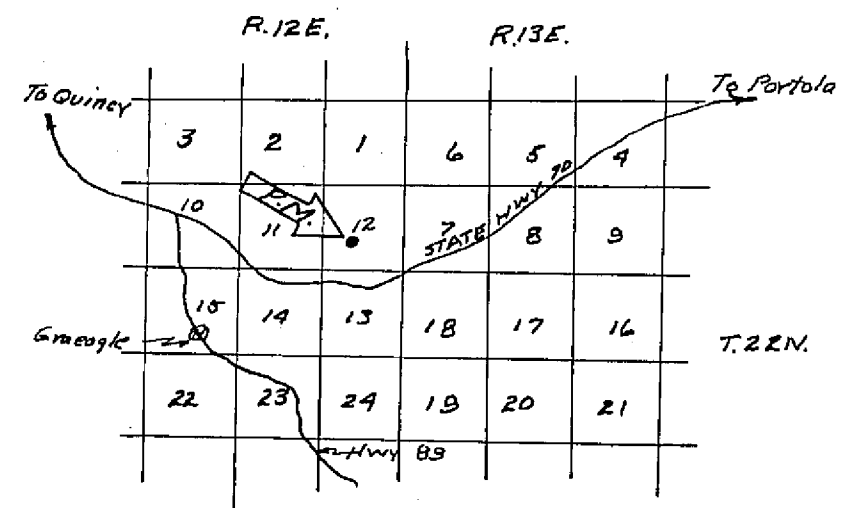


RECORD OF SURVEY BOOK 3-PAGE 3  
RECORD OF SURVEY BOOK 3-PAGE 29

SCALE 1"=100'



LOCATION MAP  
No. Scale

LEGEND

- Found 3/4" Iron Pipe, R.C.E. 7294
- ✕ Monuments not recovered
- ★ Found 1/2" Steel Pin and plastic cap, R.C.E.11173
- Set 1/2" Steel Pin with plastic cap stamped R.C.E. 11173
- O.R. Official Records, Plumas County records
- Bk. Book
- p. Page
- R.C.E. Registered Civil Engineer

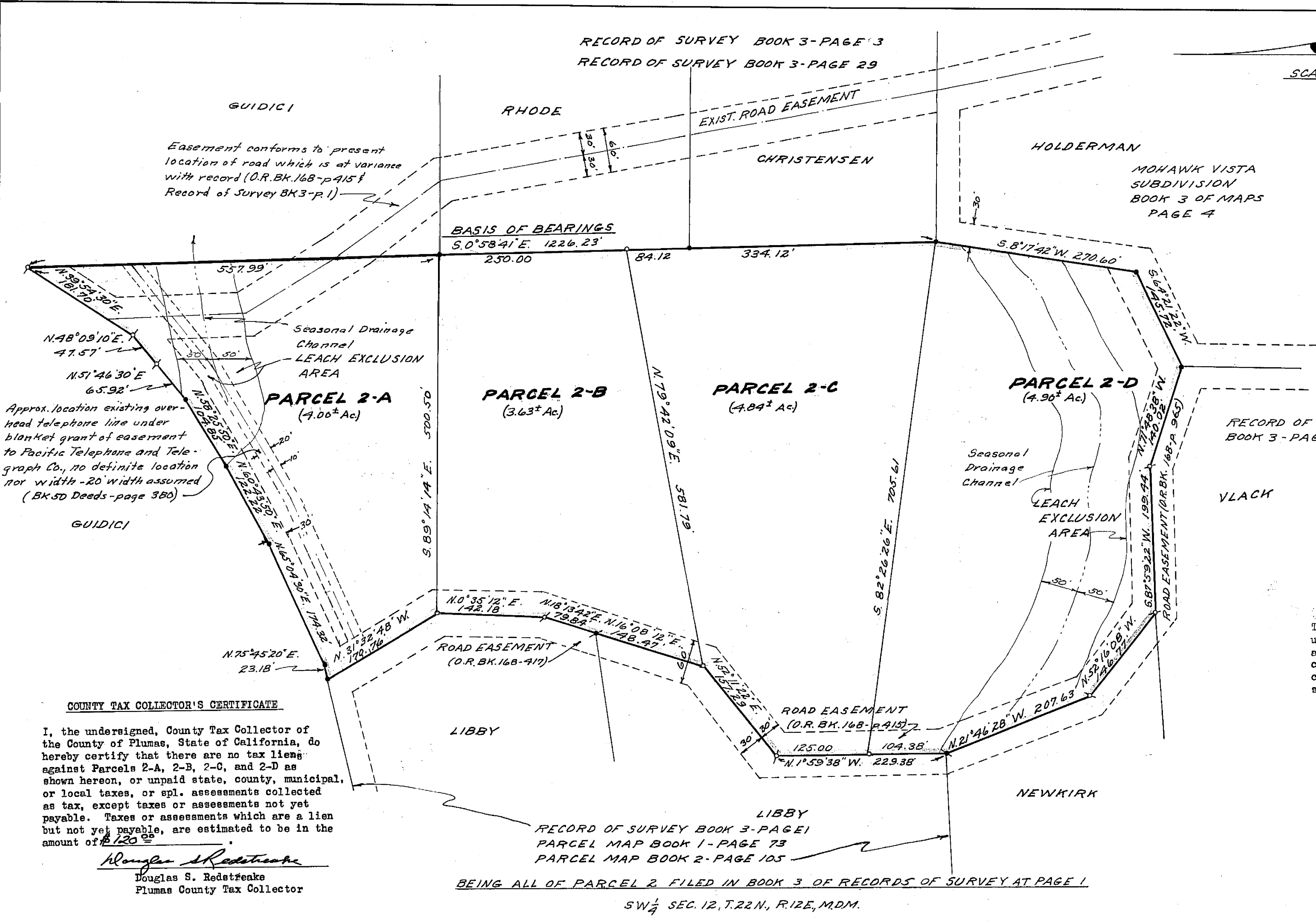
NOTE

Tentative Parcel Map approved by Plumas County Planning Commission Oct. 4, 1971.

SURVEYOR'S CERTIFICATE

This map was prepared by me or under my direction (and is based upon a field survey) in conformance with the Subdivision Map Act at the request of Gene L. Mortarotti, August 14, 1972. I hereby certify that it conforms to the approved tentative map and the conditions of approval thereof; that all provisions of applicable state law and local ordinances have been complied with.

*John C. Simpson*  
John C. Simpson  
R.C.E. 11173



COUNTY TAX COLLECTOR'S CERTIFICATE

I, the undersigned, County Tax Collector of the County of Plumas, State of California, do hereby certify that there are no tax liens against Parcels 2-A, 2-B, 2-C, and 2-D as shown hereon, or unpaid state, county, municipal, or local taxes, or spl. assessments collected as tax, except taxes or assessments not yet payable. Taxes or assessments which are a lien but not yet payable, are estimated to be in the amount of \$120.00.

*Douglas S. Redstrenke*  
Douglas S. Redstrenke  
Plumas County Tax Collector

COUNTY SURVEYOR'S CERTIFICATE

This map has been examined this 14<sup>th</sup> day of Sept. 1972, for conformance with the requirements of Section 11575 of the Subdivision Map Act.

*Darrell P. Payne*  
Plumas County Surveyor



JOHN C. SIMPSON, P.E.  
CIVIL ENGINEER  
P.O. BOX 719  
QUINCY, CALIFORNIA

RECORDER'S CERTIFICATE

Filed this 15<sup>th</sup> day of September, 1972, at 10:00 A.M. in Book 3 of Parcel Maps at Page 122 at the request of John C. Simpson.

*Dorothy Nease Marley*  
Plumas County Recorder

Fee \$5.00  
File No. 1101

PARCEL MAP  
OF  
SUBDIVISION OF FOUR PARCELS

WITHIN  
SW 1/4, SEC.12, T.22 N., R.12E., MDM.  
PLUMAS COUNTY, CALIFORNIA  
FOR

GENE L. AND Nanci R. MORTAROTTI  
RECORD OWNERS