

RECORDER'S CERTIFICATE

FILED THIS 23rd DAY OF August, 1972, AT 10:20 A.M. IN BOOK 3
OF PARCEL MAPS AT PAGE 117 AT THE REQUEST OF L.J. BROCK.

440

Dorothy New Marley
PLUMAS COUNTY RECORDER

NOTE

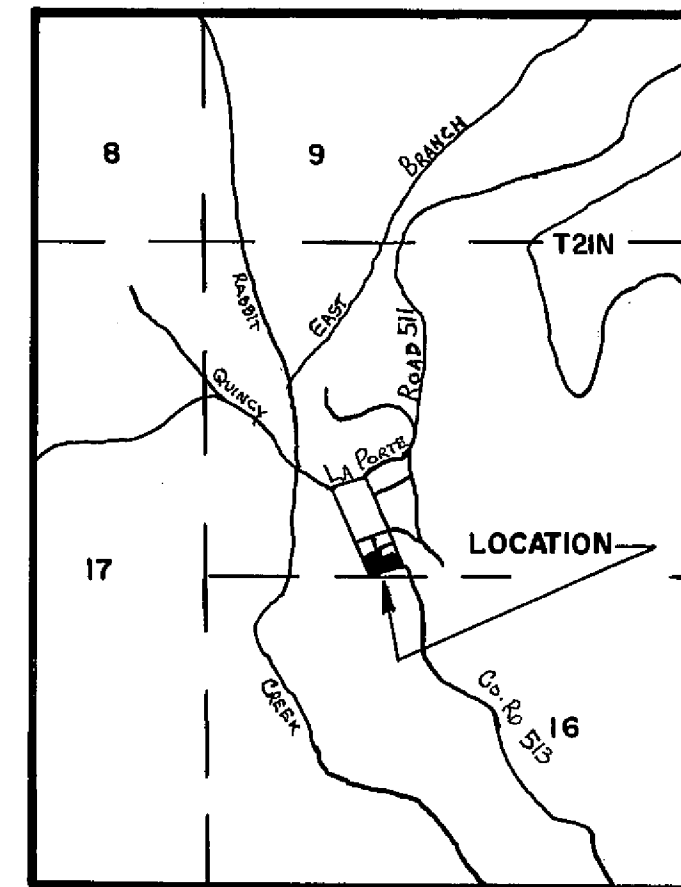
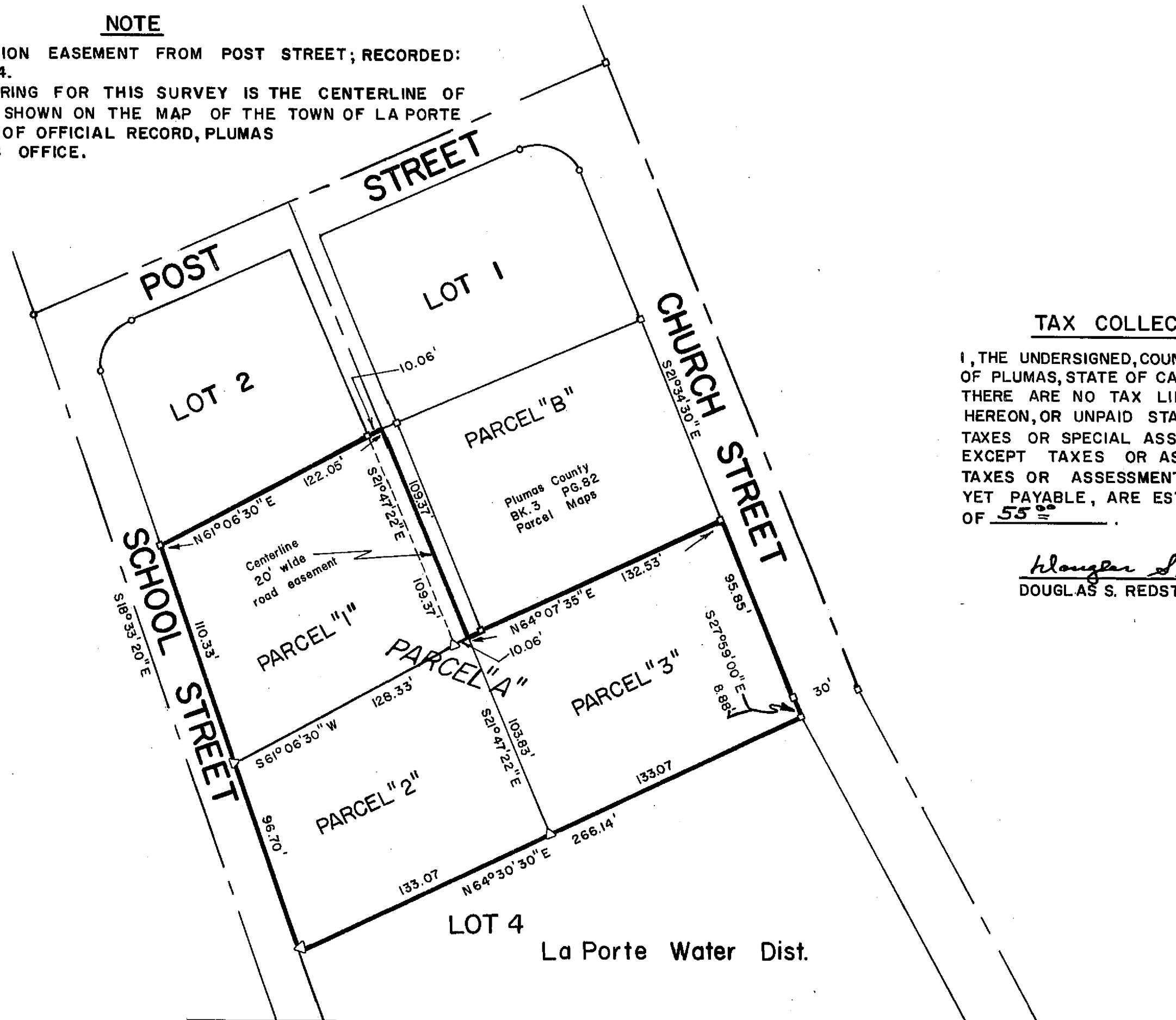
TENTATIVE PARCEL MAP APPROVED BY PLUMAS COUNTY PLANNING
COMMISSION AUGUST 2, 1972.

LEGEND

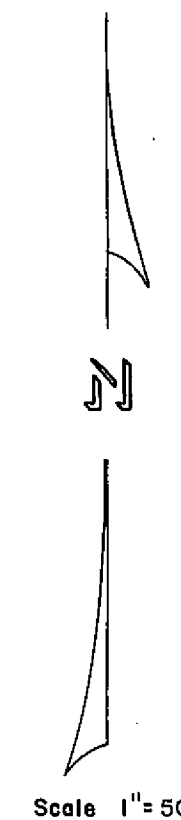
- FOUND 1"x18" STEEL PIN
- RECORD 1"x18" STEEL PIN
- △ SET 1/2"x18" STEEL PIPE TAGGED R.C.E. 13528

NOTE

20' ALLEY EXTENSION EASEMENT FROM POST STREET; RECORDED:
BOOK 207, PAGE 574.
THE BASIS OF BEARING FOR THIS SURVEY IS THE CENTERLINE OF
CHURCH STREET AS SHOWN ON THE MAP OF THE TOWN OF LA PORTE
BOOK 2 AT PAGE 75 OF OFFICIAL RECORD, PLUMAS
COUNTY RECORDERS OFFICE.



LAPORTE
T21N, R9E
scale in miles
0 0.25 0.5



TAX COLLECTORS CERTIFICATE

I, THE UNDERSIGNED, COUNTY TAX COLLECTOR OF THE COUNTY
OF PLUMAS, STATE OF CALIFORNIA, DO HEREBY CERTIFY THAT
THERE ARE NO TAX LIENS AGAINST PARCEL "A", AS SHOWN
HEREON, OR UNPAID STATE, COUNTY, MUNICIPAL, OR LOCAL
TAXES OR SPECIAL ASSESSMENTS COLLECTED AS TAXES
EXCEPT TAXES OR ASSESSMENTS NOT YET PAYABLE.
TAXES OR ASSESSMENTS WHICH ARE A LIEN, BUT NOT
YET PAYABLE, ARE ESTIMATED TO BE IN THE AMOUNT
OF \$5.88.

Douglas S. Redstreak
DOUGLAS S. REDSTREAKE, PLUMAS COUNTY
TAX COLLECTOR

SURVEYOR'S CERTIFICATE

THIS MAP WAS PREPARED BY ME OR UNDER MY DIRECTION, AND IS
BASED UPON A FIELD SURVEY AND COMPILED FROM RECORD DATA
IN CONFORMANCE WITH THE REQUIREMENTS OF THE SUBDIVISION
MAP ACT AT THE REQUEST OF MRS. G. M. O'ROURKE JULY 1, 1972.
I HEREBY CERTIFY THAT IT CONFORMS TO THE APPROVED TENTATIVE
MAP AND THE CONDITIONS OF APPROVAL THEREOF; THAT ALL
PROVISIONS OF APPLICABLE STATE LAW AND LOCAL ORDINANCES
HAVE BEEN COMPLIED WITH.

Lawrence J. Brock
LAWRENCE J. BROCK - R.C.E. 13528

COUNTY SURVEYOR'S CERTIFICATE

THIS MAP HAS BEEN EXAMINED THIS 23rd DAY OF August, 1972,
FOR CONFORMANCE WITH THE REQUIREMENTS OF SECTION 11575 OF
THE SUBDIVISION MAP ACT.

Danell P. Payne
PLUMAS COUNTY SURVEYOR

PARCEL MAP

SHOWING A SPLIT OF PARCEL "A", BOOK 3,
PG. 82 OF PARCEL MAPS, PLUMAS COUNTY,
CALIFORNIA.

IN SECTION 16, T.21N., R.9E., M.D.B. & M.

SURVEY OF THE LAND OF MRS. G.M. O'ROURKE