

LEGEND

- Found monuments as noted
- Set 1/4" iron pipe with brass tag stamped "John C. Simpson, R.C.E. 11173"
- Set 1/4" steel pin with plastic cap stamped R.C.E. 11173"
- Fd. Found
- I.P. Iron Pipe
- I.P. & T. Iron Pipe and Tag
- L.S. Land Surveyor
- R.C.E. Registered Civil Engineer
- C Chord
- R/S Record of Survey
- Rec. Record (from deed, record of survey, etc.)
- Meas. Measured

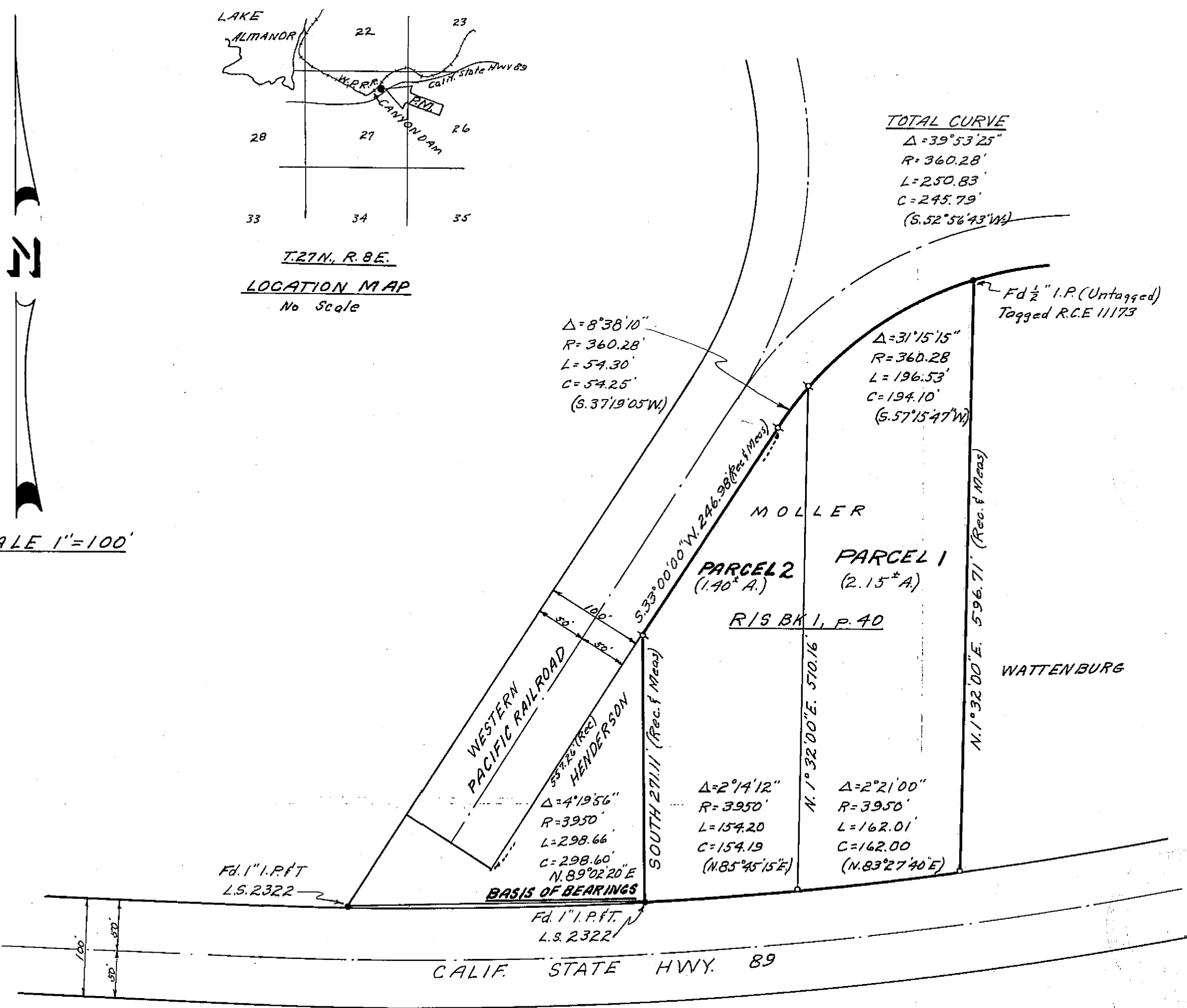
NOTES

1. Tentative Parcel Map approved by Plumas County Planning Commission October 27, 1969.
2. Basis of Bearings conforms with Record of Survey (Ex. 1, p.40) which was based on State Highway right-of-way monuments.

SURVEYOR'S CERTIFICATE

This map was prepared by me or under my direction (and is based upon a field survey) in conformance with the requirements of the Subdivision Map Act at the request of Henry J. Moller, November 3, 1969. I hereby certify that it conforms to the approved tentative map and the conditions of approval thereof; that all provisions of applicable state law and local ordinances have been complied with.

John C. Simpson
John C. Simpson
R.C.E. 11173



RECORDER'S CERTIFICATE

Filed this 18th day of November, 1969, at 11:15 A.M. in Book 2 of Parcel Maps at Page 121 at the request of John C. Simpson.

Ida Hogan Gronvold
Ida Hogan Gronvold
Plumas County Recorder
Danaher, Deputy

Fee \$5.00
File No. 2736

COUNTY SURVEYOR'S CERTIFICATE

This map has been examined this 17th day of November, 1969, for conformance with the requirements of Section 11575 of the Subdivision Map Act.

Danell P. Payne
Danell P. Payne
Plumas County Survey



JOHN C. SIMPSON, P.E.
CIVIL ENGINEER
QUINCY - CALIFORNIA

PARCEL MAP
OF
SUBDIVISION OF TWO PARCELS
FOR
HENRY J. AND VELMA G. MOLLER
WITHIN
E1/2 NW 1/4, SEC. 27, T.27N., R.8E. (MDM)
PLUMAS COUNTY, CALIFORNIA