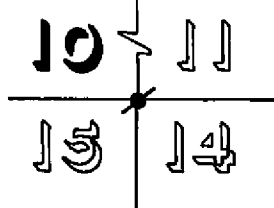
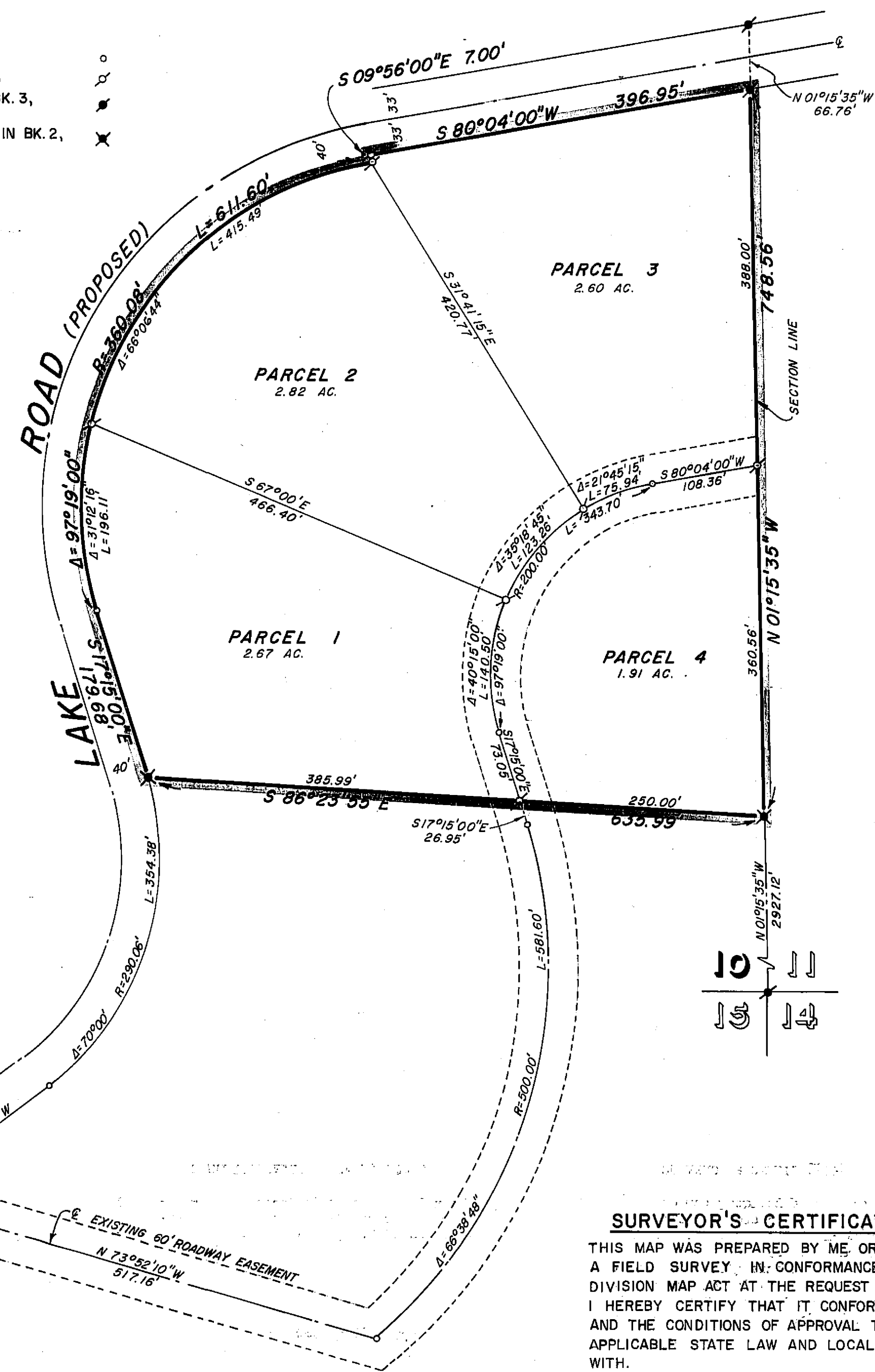
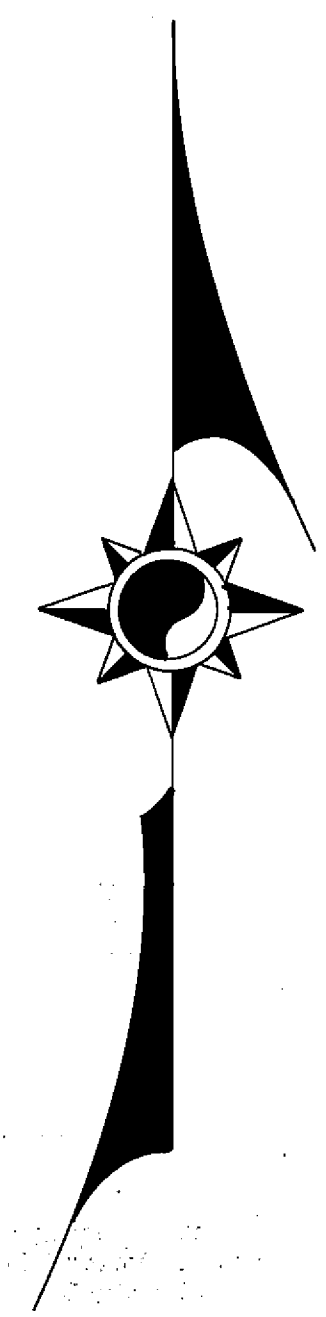


LEGEND

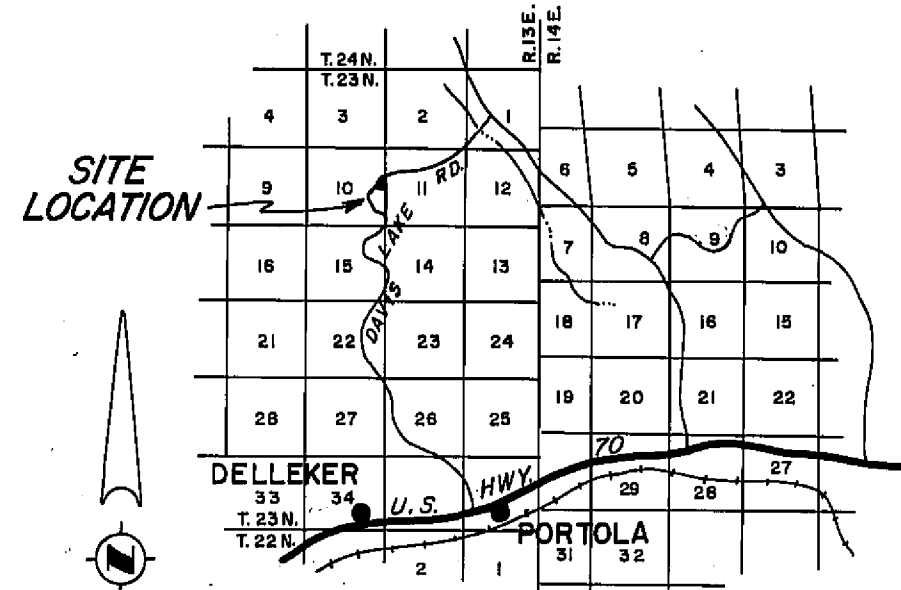
COMPUTED CORNER LOCATION
SET 3/4" IRON PIPE MARKED LS 2846
CORNER AS SHOWN ON R/S MAP IN BK. 3,
PG. 105, PLUMAS COUNTY O/R
CORNER AS SHOWN ON PARCEL MAP IN BK. 2,
PG. 48, PLUMAS COUNTY O/R



NOTES

THE BASIS OF BEARING IS THE EAST LINE OF SECTION 10, T.23N., R.13E., M.D.B.&M., GIVEN AS N 01°15'35"W ON THAT CERTAIN RECORD OF SURVEY MAP FILED NOVEMBER 30, 1967, IN BOOK 3 OF RECORD OF SURVEYS AT PAGE 105, RECORDING NO. 2456, IN THE PLUMAS COUNTY OFFICIAL RECORDS.

TOTAL ACREAGE 10.00 ACRES



LOCATION MAP

SCALE: 1" = 2-1/2 Miles

4095

RECORDER'S CERTIFICATE

FILED THIS 16th DAY OF May, 1969, AT 12:10 P.M.
IN BOOK 2 OF PARCEL MAPS AT PAGE 78 AT THE REQUEST OF
WALTER B. GRIMES. RECORDING NO. _____

FEE 5⁰⁰

Ed. Spangrowald
COUNTY RECORDER

BY _____
DEPUTY

COUNTY ENGINEER'S CERTIFICATE

THIS MAP HAS BEEN EXAMINED FOR CONFORMANCE WITH THE REQUIREMENTS OF SECTION 11575 OF THE SUBDIVISION MAP ACT THIS 15th DAY OF May, 1969.

Darrell P. Payne
DARRELL P. PAYNE, R.C.E. 8596

On Nov 25, 1968 the Planning Commission approved this map subject to a minimum of one test well acceptable to the County. No building permits are to be issued prior to proof of the availability of potable water.

SURVEYOR'S CERTIFICATE

THIS MAP WAS PREPARED BY ME OR UNDER MY DIRECTION AND IS BASED ON A FIELD SURVEY IN CONFORMANCE WITH THE REQUIREMENTS OF THE SUBDIVISION MAP ACT AT THE REQUEST OF HENRY HANSEN IN NOVEMBER, 1968. I HEREBY CERTIFY THAT IT CONFORMS TO THE APPROVED TENTATIVE MAP AND THE CONDITIONS OF APPROVAL THEREOF, AND THAT ALL PROVISIONS OF APPLICABLE STATE LAW AND LOCAL ORDINANCES HAVE BEEN COMPLIED WITH.

Edward P. Norris
EDWARD P. NORRIS, L.S. 2846

PARCEL MAP
A PORTION OF THE N.E. 1/4 OF SECTION 10, T.23N., R.13E., M.D.B.&M. PLUMAS COUNTY, CALIFORNIA

MAP OF THE LANDS OF HENRY HANSEN

SCALE: 1" = 100' NOVEMBER, 1968

G WALTER B. **A**
RIMES & ASSOC.
CIVIL ENGINEERS & LAND SURVEYORS
1356 MANGROVE AVENUE, CHICO, CALIFORNIA

2 pm 78
Sepia