

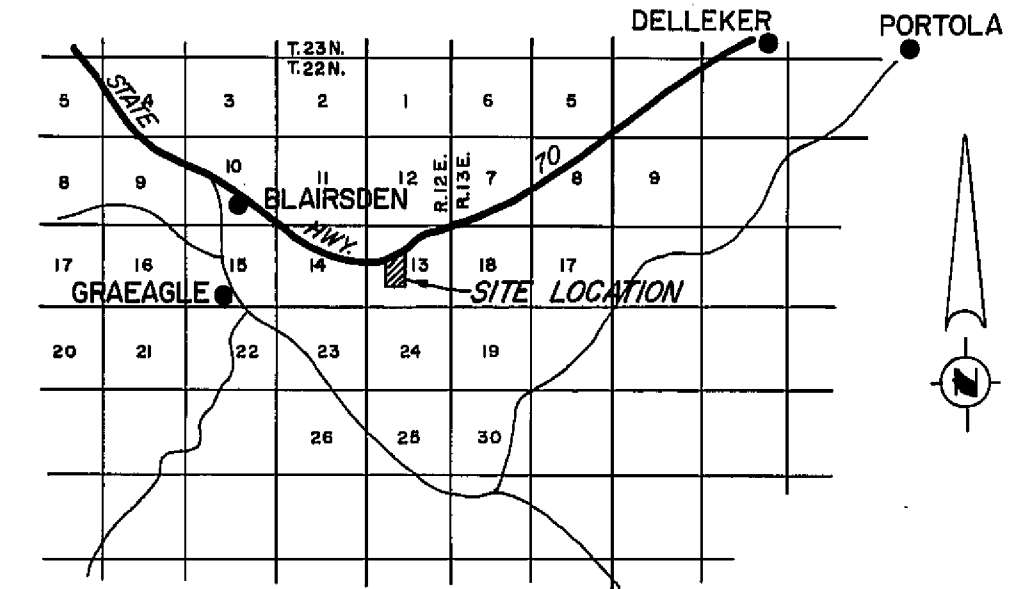
LEGEND

- COMPUTED CORNER LOCATION
- ◐ CORNER AS SHOWN ON R/S MAP IN BK. 3, PG. 72, PLUMAS COUNTY O/R
- ✕ CORNER AS SHOWN ON PARCEL MAP IN BK. 2 PG. 40, PLUMAS COUNTY O/R

NOTES

THE BASIS OF BEARING IS THE NORTH-SOUTH CENTERLINE OF SECTION 13, T.22N., R.12E., M.D.B.&M., GIVEN AS S 01°04'14"E ON THAT CERTAIN RECORD OF SURVEY MAP FILED JULY 25, 1966, IN BOOK 3 OF RECORD OF SURVEYS AT PAGE 72, RECORDING NO. 338, IN THE PLUMAS COUNTY OFFICIAL RECORDS.

TOTAL ACREAGE 59.56 AC.



LOCATION MAP
SCALE: 1" = 2-1/2 Miles

RECORDER'S CERTIFICATE

FILED THIS 16th DAY OF April, 1969,
AT 9:30 A.M. IN BOOK 2 OF PARCEL MAPS AT PAGE 70 AT
THE REQUEST OF WALTER B. GRIMES. RECORDING NO. 3831.

FEE 5.00

John Hagan Mansfield
COUNTY RECORDER
Debra, Deputy

COUNTY ENGINEER'S CERTIFICATE

THIS MAP HAS BEEN EXAMINED FOR CONFORMANCE WITH THE REQUIREMENTS OF SECTION 11575 OF THE SUBDIVISION MAP ACT THIS 16th DAY OF April, 1969.

Darrell P. Payne
DARRELL P. PAYNE, R.C.E. 8596

SURVEYOR'S CERTIFICATE

THIS MAP WAS PREPARED BY ME OR UNDER MY DIRECTION AND IS COMPILED FROM RECORD DATA IN CONFORMANCE WITH THE REQUIREMENTS OF THE SUBDIVISION MAP ACT AT THE REQUEST OF EUREKA ENTERPRISES IN NOVEMBER, 1968. I HEREBY CERTIFY THAT IT CONFORMS TO THE APPROVED TENTATIVE MAP AND THE CONDITIONS OF APPROVAL THEREOF, AND THAT ALL PROVISIONS OF APPLICABLE STATE LAW AND LOCAL ORDINANCES HAVE BEEN COMPLIED WITH.

Edward P. Norris
EDWARD P. NORRIS, L.S. 2846

PARCEL MAP
A PORTION OF THE WEST 1/2 OF SECTION 13, T.22N., R.12E., M.D.B.&M. PLUMAS COUNTY, CALIFORNIA

MAP OF THE LANDS OF
EUREKA ENTERPRISES
SCALE: 1" = 200' NOVEMBER, 1968

G WALTER B. **A**
RIMES & ASSOC.
CIVIL ENGINEERS & LAND SURVEYORS
1356 MANGROVE AVENUE, CHICO, CALIFORNIA

