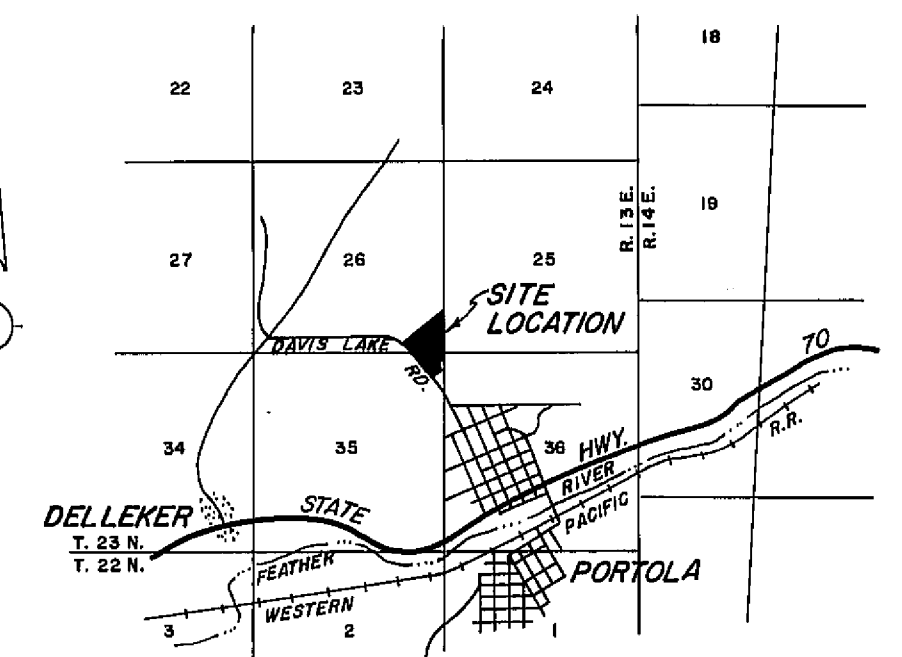
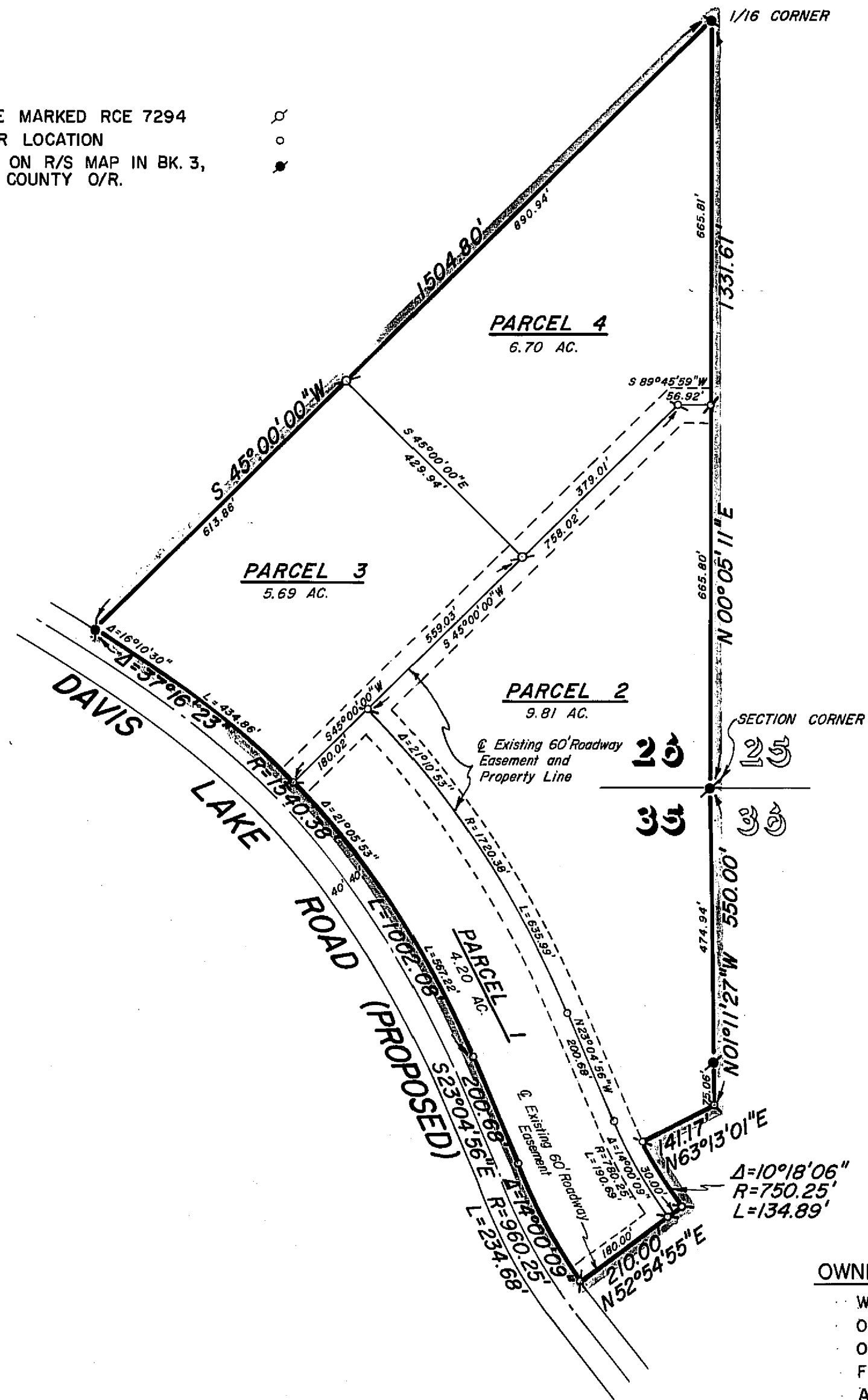


LEGEND

SET 3/4" IRON PIPE MARKED RCE 7294
COMPUTED CORNER LOCATION
CORNER AS SHOWN ON R/S MAP IN BK. 3,
PG. 91, PLUMAS COUNTY O/R.



LOCATION MAP
SCALE: 1" = 1 Mile

RECORDER'S CERTIFICATE

FILED THIS 19th DAY OF November, 1968, AT 11:30 A.M.
IN BOOK 2 OF PARCEL MAPS AT PAGE 52 AT THE REQUEST OF
WALTER B. GRIMES. RECORDING NO. 2555

FEE 5⁰⁰

Walter B. Grimes
COUNTY RECORDER

BY _____
DEPUTY

COUNTY ENGINEER'S CERTIFICATE

THIS MAP HAS BEEN EXAMINED FOR CONFORMANCE WITH THE REQUIREMENTS
OF SECTION 11575 OF THE SUBDIVISION MAP ACT THIS 11th DAY OF
November, 1968.

Darrell P. Payne
DARRELL P. PAYNE, R.C.E. 8596

PARCEL MAP

A PORTION OF SECTIONS 26 & 35,
T.23N., R.13E., M.D.B. & M.
PLUMAS COUNTY, CALIFORNIA

MAP OF THE LANDS OF
LESTER T. DAVIS, JR.,
& SHIRLEY G. DAVIS

SCALE: 1" = 200' AUGUST, 1968

G WALTER B. GRIMES & ASSOC.
CIVIL ENGINEERS & LAND SURVEYORS
1356 MANGROVE AVENUE, CHICO, CALIFORNIA

OWNERS' CERTIFICATE

WE, LESTER T. DAVIS JR. & SHIRLEY G. DAVIS, HEREBY CERTIFY THAT WE ARE THE OWNERS OF THE LANDS SHOWN HEREON AND WE CONSENT TO THE RECORDATION OF THIS PARCEL MAP. THE EASEMENTS SHOWN HEREON ARE INTENDED FOR THE FULL USE AND ENJOYMENT OF THE PARCEL OWNER OF THIS MAP AND OTHER ADJACENT AND SUBSEQUENT PARCEL OWNERS.

Lester T. Davis, Jr. *Shirley G. Davis*
LESTER T. DAVIS, JR. SHIRLEY G. DAVIS

SURVEYOR'S CERTIFICATE

THIS MAP WAS PREPARED BY ME OR UNDER MY DIRECTION AND IS COMPILED FROM RECORD DATA IN CONFORMANCE WITH THE REQUIREMENTS OF THE SUBDIVISION MAP ACT AT THE REQUEST OF LESTER T. DAVIS, JR., AND SHIRLEY G. DAVIS IN AUGUST, 1968. I HEREBY CERTIFY THAT IT CONFORMS TO THE APPROVED TENTATIVE MAP AND THE CONDITIONS OF APPROVAL THEREOF, AND THAT ALL PROVISIONS OF APPLICABLE STATE LAW AND LOCAL ORDINANCES HAVE BEEN COMPLIED WITH.

Edward P. Norris
EDWARD P. NORRIS, L.S. 2846

NOTES

THE BASIS OF BEARING IS THE EAST LINE OF THE S.E. 1/4 OF SECTION 26, T. 23 N., R. 13 E., M.D.B. & M., GIVEN AS S 00°05'11" W ON THAT CERTAIN RECORD OF SURVEY MAP FILED AUGUST 8, 1967, IN BOOK 3 OF RECORD OF SURVEYS AT PAGE 91, RECORDING NO. 482, IN THE PLUMAS COUNTY OFFICIAL RECORDS.

TOTAL ACREAGE 26.40 AC.