

RECORDER'S CERTIFICATE

FILED THIS 7th DAY OF Nov, 1968, AT 4:10 PM
IN BOOK 2 OF PARCEL MAPS AT PAGE 47 AT THE REQUEST
OF DONALD MAJOR, RECORDING NO. 2442

500

John Hogan Brown
COUNTY RECORDER

COUNTY ENGINEER'S CERTIFICATE

THIS MAP HAS BEEN EXAMINED FOR CONFORMANCE WITH
THE REQUIREMENTS OF SECTION 11575 OF THE
SUBDIVISION MAP ACT THIS 7th DAY OF November, 1968

Darrell P Payne
DARRELL P PAYNE RCE 8596

SURVEYOR'S CERTIFICATE

THIS MAP WAS PREPARED BY ME OR UNDER MY DIRECTION AND IS BASED
UPON A FIELD SURVEY IN CONFORMANCE WITH THE REQUIREMENTS OF THE
SUBDIVISION MAP ACT AT THE REQUEST OF WALTER CLIFF IN OCTOBER, 1968
I HEREBY CERTIFY THAT IT CONFORMS TO THE APPROVED TENTATIVE MAP
AND THAT ALL PROVISIONS OF APPLICABLE STATE LAW AND LOCAL
ORDINANCES HAVE BEEN COMPLIED WITH

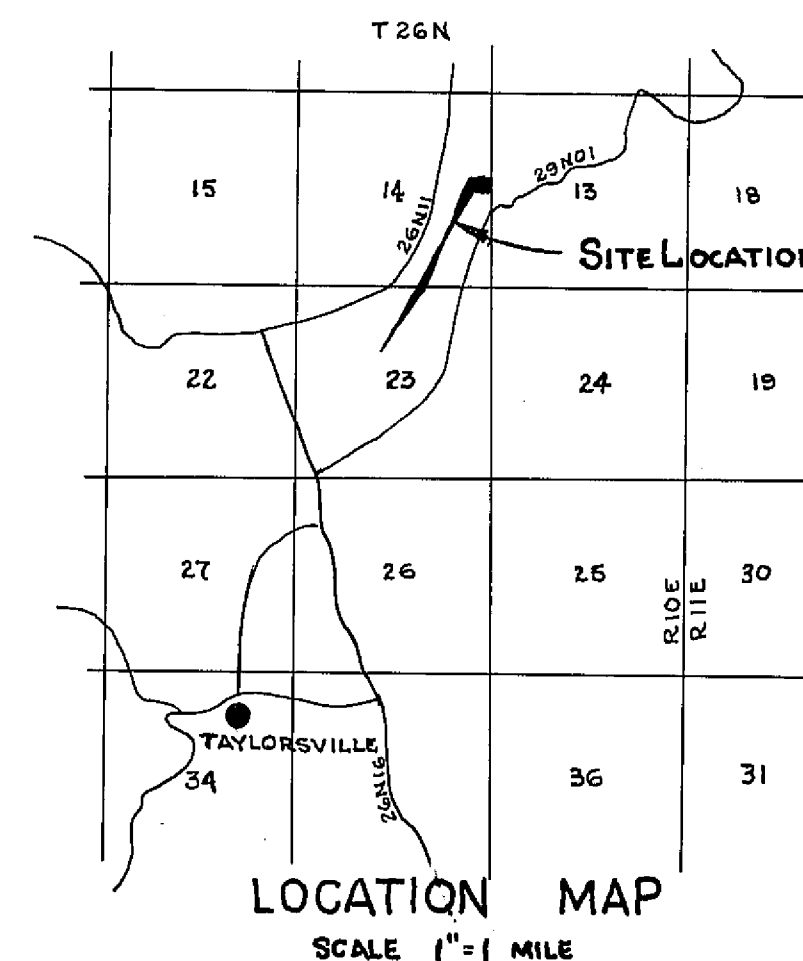
Donald C Major
DONALD C MAJOR RCE 13328

NOTES

THE BASIS OF BEARING IS THE EAST LINE OF
SECTION 14, GIVEN AS N 02° 09' 27" W ON THAT
CERTAIN RECORD OF SURVEY MAP FILED IN
BOOK 3 OF RECORDS OF SURVEYS AT PAGE 94

LEGEND

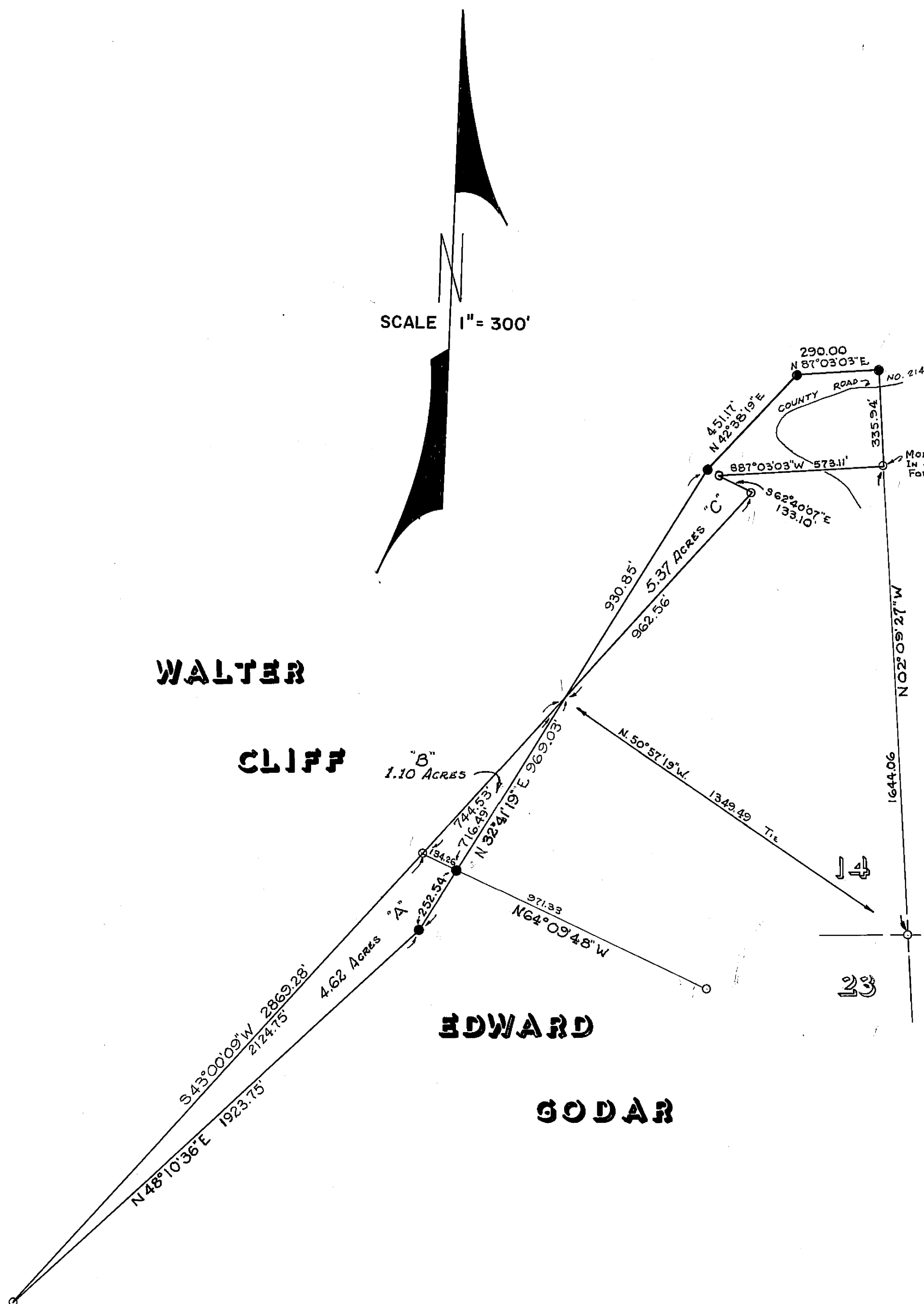
FOUND MONUMENT AS DESCRIBED
ON 3 R/S 94
SET 3/4" I.P. TAGGED RCE 13328



SCALE 1" = 300'

WALTER
CLIFF

EDWARD
GODAR



PARCEL MAP
A PORTION OF SECTIONS 14 & 23
T.26 N., R.10 E., MDB & M.
PLUMAS COUNTY, CALIFORNIA
THE LANDS OF
WALTER CLIFF
&
EDWARD GODAR