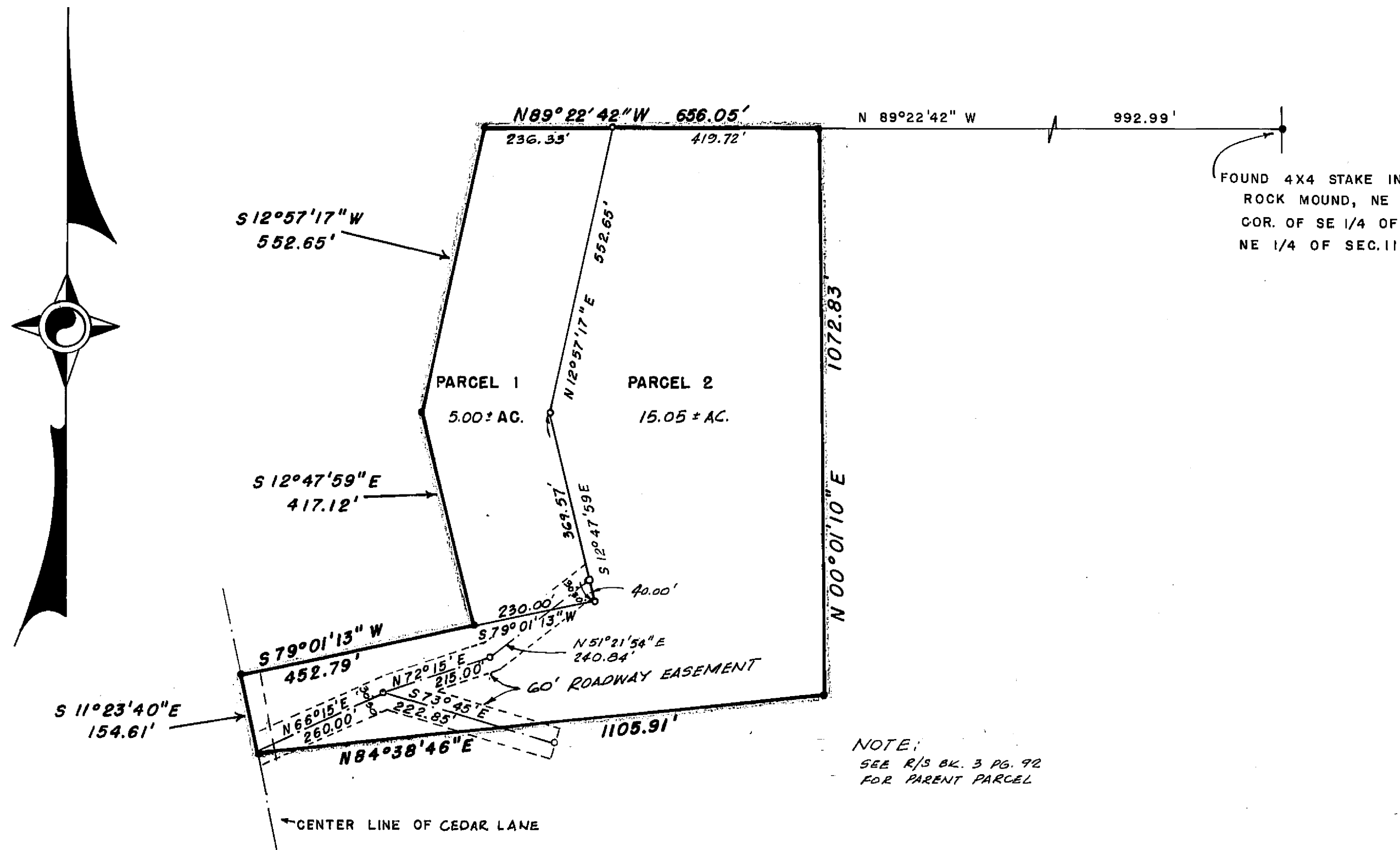


# SECTION 11 T.23N. R.11E.



## OWNERS CERTIFICATE

I, A. A. BUTLER, HEREBY CERTIFY THAT I AM THE OWNER OF THE LANDS SHOWN HEREON AND I CONSENT TO THE RECORDATION OF THIS PARCEL MAP. THE EASEMENTS SHOWN HEREON ARE INTENDED FOR THE FULL USE AND ENJOYMENT OF THE PARCEL OWNER OF THIS MAP & OTHER ADJACENT & SUBSEQUENT PARCEL OWNERS

*A. A. Butler*  
A. A. BUTLER

## SURVEYOR'S CERTIFICATE

THIS MAP WAS PREPARED BY ME OR UNDER MY DIRECTION AND WAS COMPILED FROM RECORD DATA IN CONFORMANCE WITH THE REQUIREMENTS OF THE SUBDIVISION MAP ACT AT THE REQUEST OF A. A. BUTLER IN AUGUST, 1968. I HEREBY CERTIFY THAT IT CONFORMS TO THE APPROVED TENTATIVE MAP AND THE CONDITIONS OF APPROVAL THEREOF, AND THAT ALL PROVISIONS OF APPLICABLE STATE LAW AND LOCAL ORDINANCES HAVE BEEN COMPLIED WITH.

*Donald C. Major*  
DONALD C. MAJOR, R.C.E. 13328

## RECORDER'S CERTIFICATE

FILED THIS 1st DAY OF November, 1968,  
AT 3:32 P.M. IN BOOK 2 OF PARCEL MAPS AT PAGE 45 AT  
THE REQUEST OF WALTER B. GRIMES. RECORDING NO. 2369  
FEE 5.00

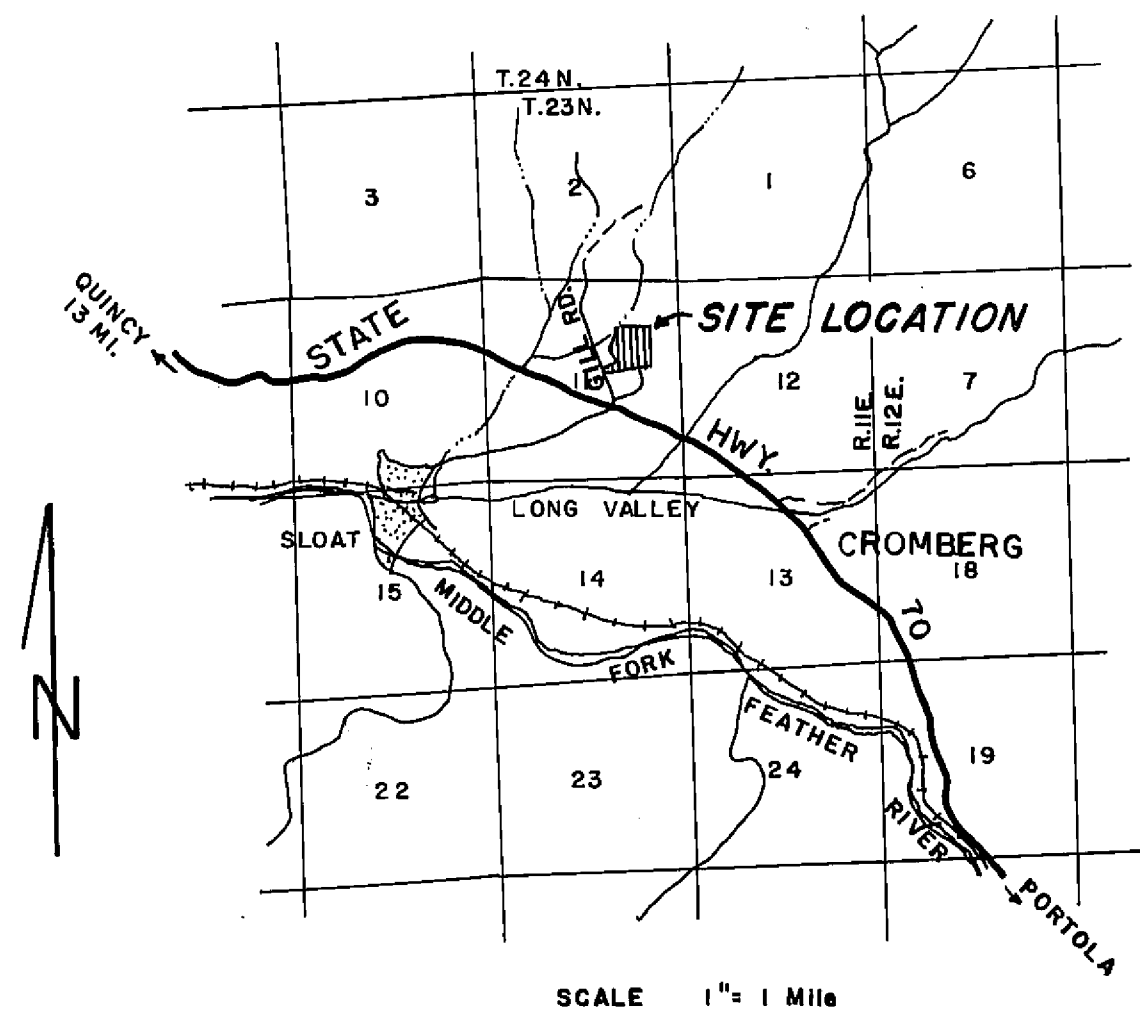
*W. B. Grimes*  
COUNTY RECORDER

BY \_\_\_\_\_  
DEPUTY

## COUNTY ENGINEER'S CERTIFICATE

THIS MAP HAS BEEN EXAMINED FOR CONFORMANCE WITH THE REQUIREMENTS OF SECTION 11575 OF THE SUBDIVISION MAP ACT THIS 1st DAY OF November, 1968.

*Darrell P. Payne*  
DARRELL P. PAYNE, R.C.E. 8596



LOCATION MAP

## NOTES

THE BASIS OF BEARING IS THE NORTH LINE OF PARCELS 1 & 2 GIVEN AS N89°22'42"W IN THAT CERTAIN DEED RECORDED JANUARY 15, 1962 IN BOOK 153 AT PAGE 317 IN THE PLUMAS COUNTY OFFICIAL RECORDS.

TOTAL ACREAGE 20.05 AC.

## LEGEND

COMPUTED CORNER LOCATION  
CORNER AS SHOWN ON R/S MAP BK. 3,  
PAGE 92

## PARCEL MAP

A PORTION OF THE NORTHEAST 1/4 OF  
SECTION 11, T.23N., R.11E., M.D.B.&M.  
PLUMAS COUNTY, CALIFORNIA

MAP OF THE LANDS OF  
A. A. BUTLER  
SCALE 1" = 200' AUGUST 1968  
WALTER B. GRIMES ASSOC.  
CIVIL ENGINEERS & LAND SURVEYORS  
20 CRESCENT STREET, QUINCY, CALIFORNIA