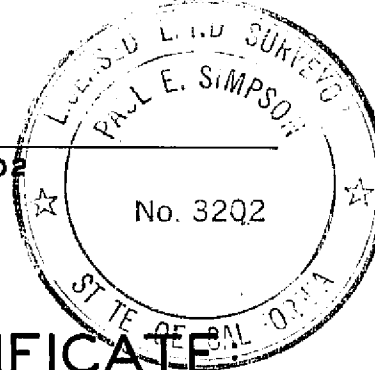


LOCATION MAP
SCALE: 1" = 1 MILE

SURVEYOR'S CERTIFICATE:

THIS MAP WAS PREPARED BY ME OR UNDER MY DIRECTION AND IS BASED UPON A FIELD SURVEY IN CONFORMANCE WITH THE REQUIREMENTS OF THE SUBDIVISION MAP ACT AT THE REQUEST OF FRANK ADCOCK IN JUNE 1968. I HEREBY CERTIFY THAT IT CONFORMS TO THE APPROVED TENTATIVE MAP AND THE CONDITIONS OF APPROVAL THEREOF; THAT ALL PROVISIONS OF APPLICABLE STATE LAW AND LOCAL ORDINANCES HAVE BEEN COMPLIED WITH.

Paul E. Simpson
PAUL E. SIMPSON, LICENSED LAND SURVEYOR NO. 3202



COUNTY SURVEYOR'S CERTIFICATE

THIS MAP HAS BEEN EXAMINED THIS 25 DAY OF JUNE 1968, FOR CONFORMANCE WITH THE REQUIREMENTS OF SECTION 11575 OF THE SUBDIVISION MAP ACT.

Darrell P. Payne, R.C.E. 8596 Asst. Co. Engr.
LAWRENCE J. BROCK, R.C.E. NO. 13528, PLUMAS COUNTY SURVEYOR

RECORDER'S CERTIFICATE:

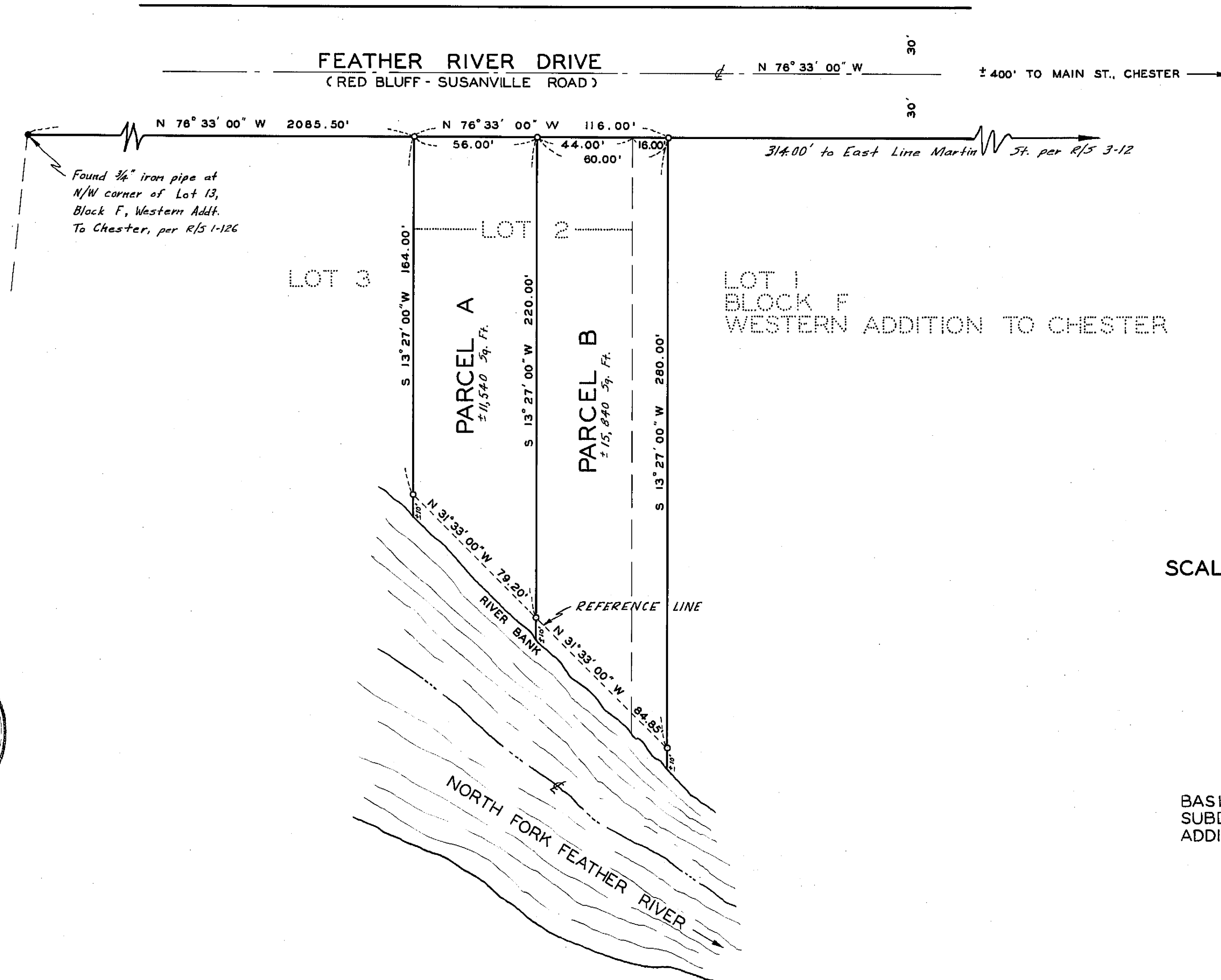
FILED FOR RECORD THIS 25 DAY OF JUNE 1968 AT 4:45 P.M. IN BOOK 2 OF PARCEL MAPS AT PAGE 27, AT THE REQUEST OF PAUL E. SIMPSON.

FEE 5.00
FILE NO. 4316

Ida Hogan Gronvold
IDA HOGAN GRONVOLD, PLUMAS COUNTY RECORDER

LEGEND

⊕ Set 1/2" iron pipe tagged I.S. 3202



SCALE: 1" = 40'

BASIS OF BEARINGS IS THE
SUBDIVISION MAP OF WESTERN
ADDITION TOWN OF CHESTER.

PARCEL MAP FOR
FRANK ADCOCK
LOTS 1 & 2, BLOCK F, WESTERN ADDITION TO CHESTER
PLUMAS COUNTY, CALIFORNIA
SCALE: 1" = 40'

VANDENBERG & SIMPSON, ENGINEERS & SURVEYORS
SUSANVILLE, CALIFORNIA
JUNE 13, 1968

SHEET 1 OF 1