

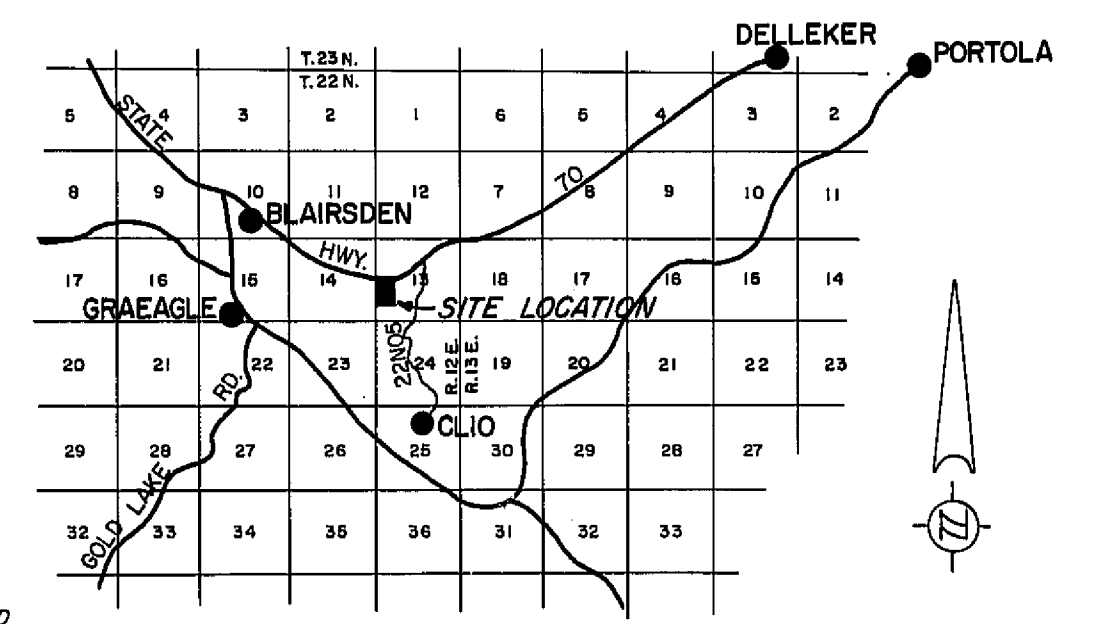
**LEGEND**

- FOUND SECTION CORNER
- FOUND 3/4" IRON PIPE MARKED RCE 7294
- FOUND AS SHOWN
- SET 3/4" IRON PIPE MARKED RCE 7294
- COMPUTED CORNER LOCATION

**NOTES**

THE BASIS OF BEARING IS THE WEST LINE OF SECTION 13, T.22N., R.12E., M.D.B.&M., GIVEN AS S 01°22'08"E ON THAT CERTAIN RECORD OF SURVEY MAP FILED JULY 25, 1966, IN BOOK 3 OF RECORD OF SURVEYS AT PAGE 72, RECORDING NO. 338, IN THE PLUMAS COUNTY OFFICIAL RECORDS.

TOTAL ACREAGE - 43.54 AC.



SCALE 0 1 2 3 4 MILES  
**LOCATION MAP**

**RECORDER'S CERTIFICATE**

FILED THIS 20<sup>th</sup> DAY OF MAY, 1968  
 AT 9:30 A.M. IN BOOK 2 OF PARCEL MAPS AT PAGE 24 AT  
 THE REQUEST OF WALTER B. GRIMES, RECORDING NO. 3889

FEE 5.00

*Ida Hogan Gronwald*  
 COUNTY RECORDER

BY \_\_\_\_\_ DEPUTY

**COUNTY ENGINEER'S CERTIFICATE**

THIS MAP HAS BEEN EXAMINED FOR CONFORMANCE WITH THE REQUIREMENTS OF SECTION 11575 OF THE SUBDIVISION MAP ACT THIS 20<sup>th</sup> DAY OF MAY, 1968.

*Darrell P. Payne* *Arch. Co. Engr.*  
 LAWRENCE J. BROCK, R.C.E. 13528

**SURVEYOR'S CERTIFICATE**

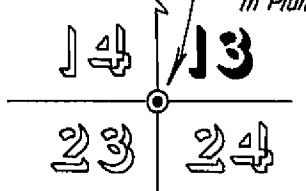
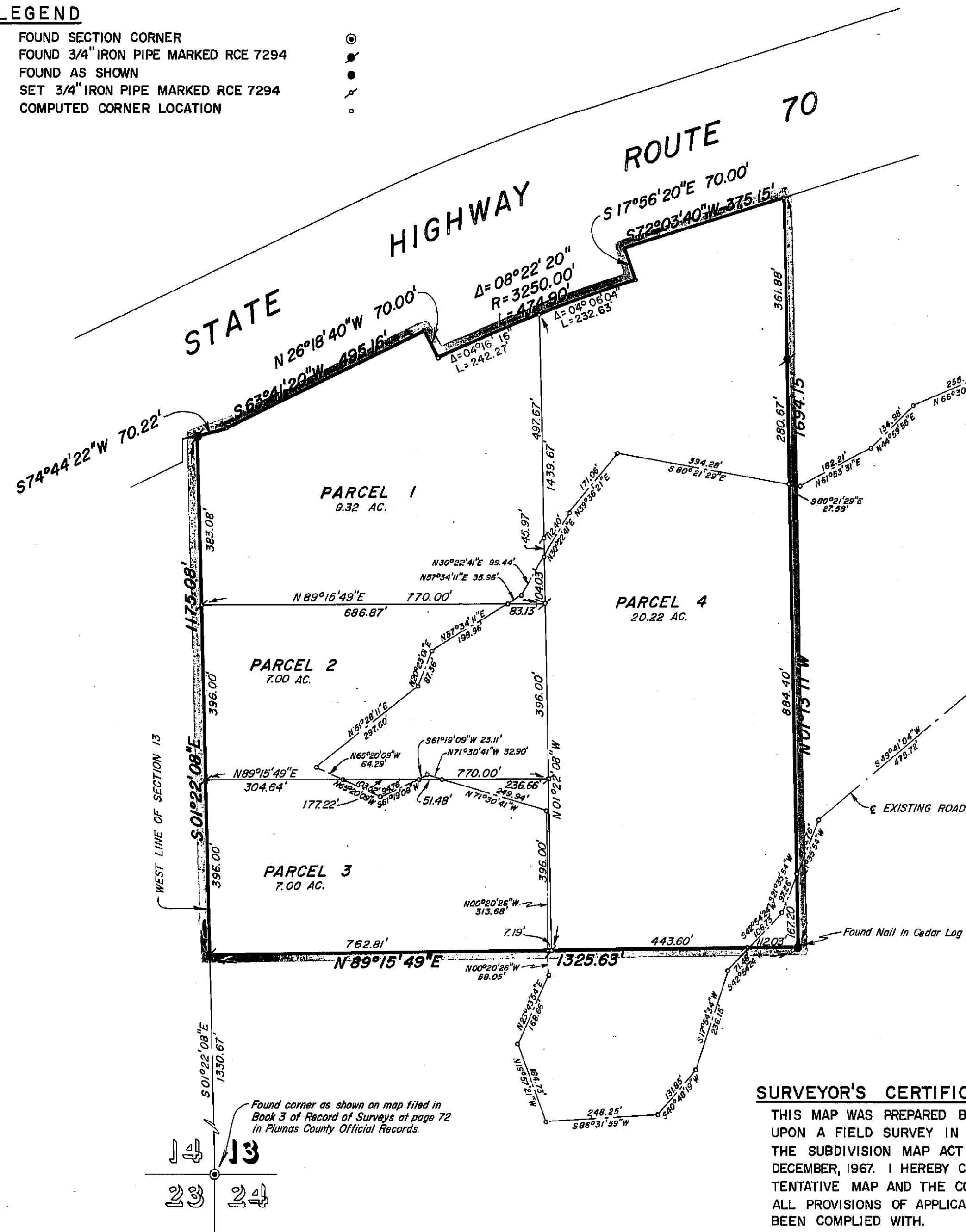
THIS MAP WAS PREPARED BY ME OR UNDER MY DIRECTION AND IS BASED UPON A FIELD SURVEY IN CONFORMANCE WITH THE REQUIREMENTS OF THE SUBDIVISION MAP ACT AT THE REQUEST OF KARL W. TRAYLOR IN DECEMBER, 1967. I HEREBY CERTIFY THAT IT CONFORMS TO THE APPROVED TENTATIVE MAP AND THE CONDITIONS OF APPROVAL THEREOF, AND THAT ALL PROVISIONS OF APPLICABLE STATE LAW AND LOCAL ORDINANCES HAVE BEEN COMPLIED WITH.

*Edward P. Norris*  
 EDWARD P. NORRIS, L.S. 2846

**PARCEL MAP**  
 A PORTION OF THE WEST 1/2 OF SECTION 13, T.22N., R.12E., M.D.B.&M. PLUMAS COUNTY, CALIFORNIA

MAP OF THE LANDS OF  
**KARL W. TRAYLOR**  
 SCALE: 1" = 200' DECEMBER, 1967

**G** WALTER B. **A**SSOC.  
**R**IMES  
 CIVIL ENGINEERS & LAND SURVEYORS  
 1356 MANGROVE AVENUE, CHICO, CALIFORNIA



Found corner as shown on map filed in Book 3 of Record of Surveys at page 72 in Plumas County Official Records.

Found Nail in Cedar Log