

SECTION CORNER as shown on that certain Record of Survey Map filed June 3, 1966, in Book 3 of Record of Surveys at page 68 in the Plumas County Official Records.

NORTH 1/4 CORNER of Section 22, T.27N., R.13E., M.D.B.&M., as shown on that certain Record of Survey Map filed June 3, 1966, in Book 3 of Record of Surveys at page 68 in the Plumas County Official Records.

13 15
21 22

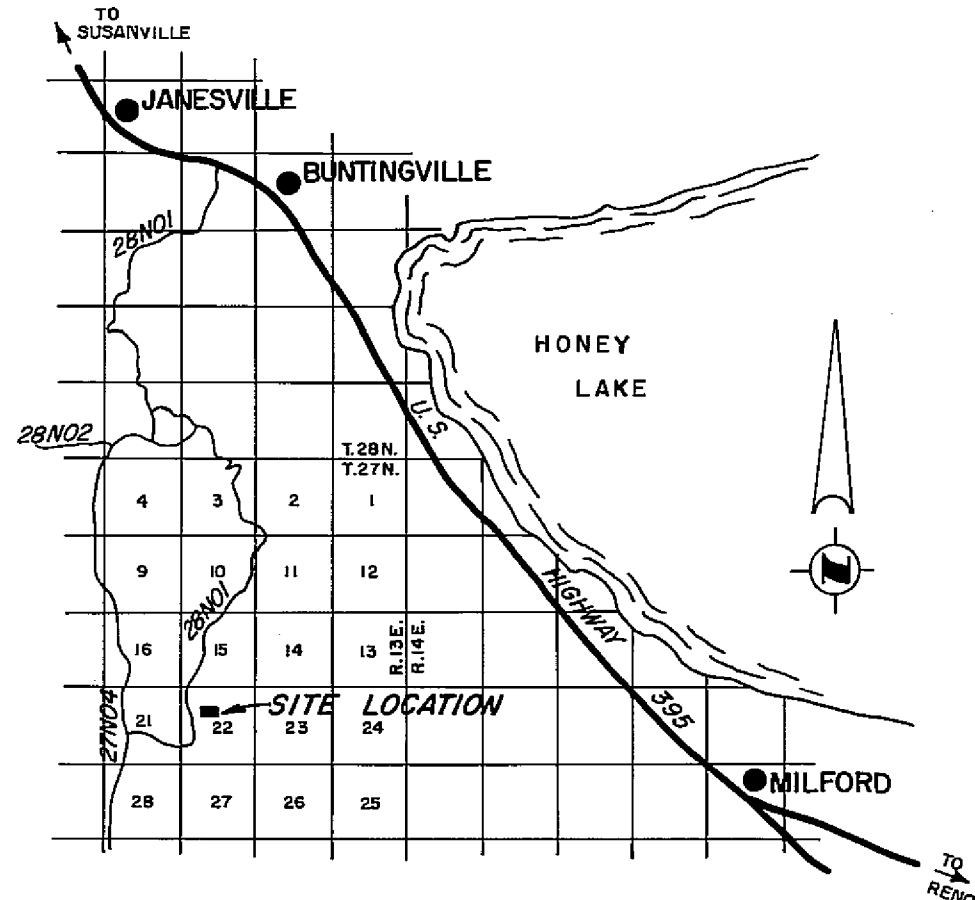
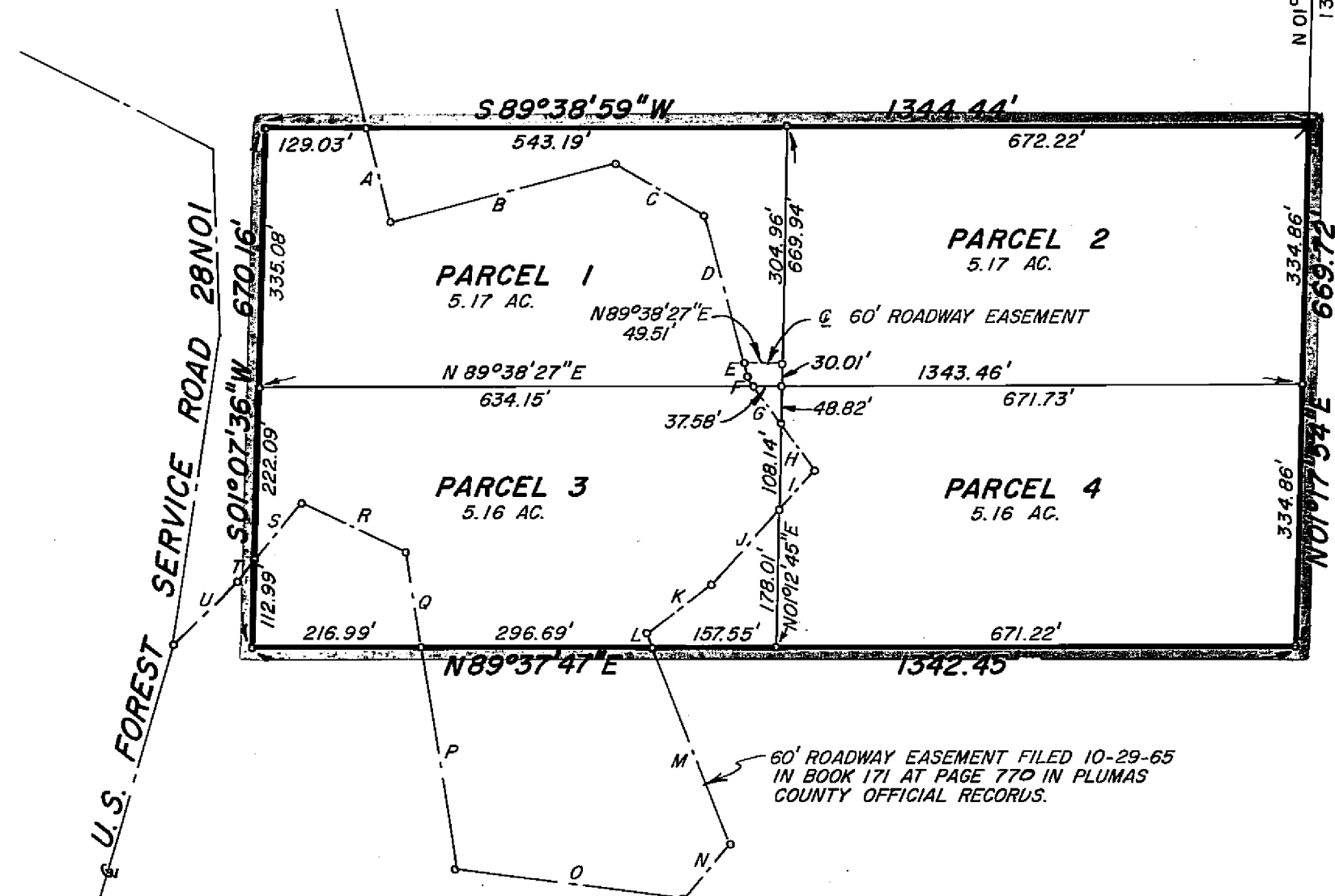
S 89°41'34"W 2696.88'

North-South C. of Section 22

N 01°17'54"E 1389.44'

60' ROADWAY EASEMENT

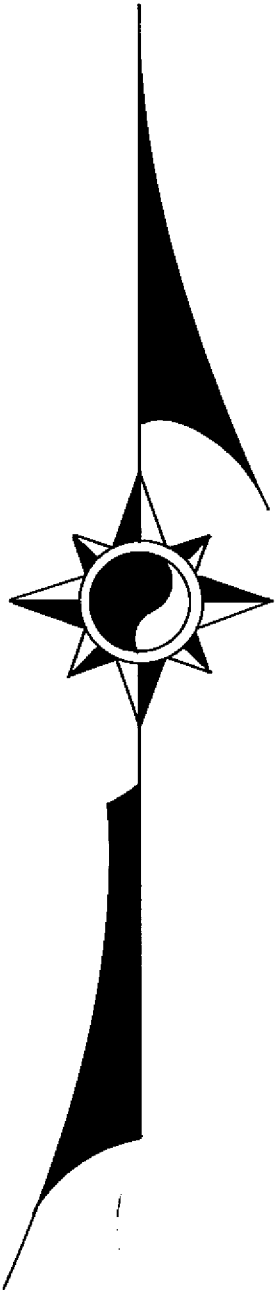
"A"	S 14°35'21"E	127.20'
"B"	N 76°25'02"E	299.64'
"C"	S 59°24'50"E	132.45'
"D"	S 15°21'05"E	188.48'
"E"	S 15°21'05"E	24.37'
"F"	S 36°57'23"E	8.04'
"G"	S 36°57'23"E	60.79'
"H"	S 36°57'23"E	71.69'
"I"	S 41°44'48"W	68.15'
"J"	S 41°44'48"W	129.70'
"K"	S 52°12'42"W	104.09'
"L"	S 21°36'55"E	19.84'
"M"	S 21°36'55"E	272.13'
"N"	S 40°24'16"W	92.81'
"O"	N 82°49'37"W	295.23'
"P"	N 08°45'03"W	288.25'
"Q"	N 08°45'03"W	127.30'
"R"	N 65°17'48"W	147.84'
"S"	S 38°46'53"W	97.53'
"T"	S 38°46'53"W	31.64'
"U"	S 45°07'55"W	116.00'



LOCATION MAP
SCALE: 1" = 2-1/2 Miles

LEGEND

- SECTION CORNER AS SHOWN
- 1/4 CORNER AS SHOWN
- FOUND 3/4" IRON PIPE MARKED RCE 7294
- COMPUTED CORNER LOCATION



NOTES

THE BASIS OF BEARING IS THE NORTH-SOUTH CENTERLINE OF SECTION 22, T.27N., R.13E., M.D.B.&M., GIVEN AS N01°17'54"E ON THAT CERTAIN RECORD OF SURVEY MAP FILED JUNE 3, 1966, IN BOOK 3 OF RECORD OF SURVEYS AT PAGE 68, RECORDING NO. 4534, IN THE PLUMAS COUNTY OFFICIAL RECORDS.

TOTAL ACREAGE 20.66 AC.

SURVEYOR'S CERTIFICATE

THIS MAP WAS PREPARED BY ME OR UNDER MY DIRECTION AND IS BASED UPON A FIELD SURVEY IN CONFORMANCE WITH THE REQUIREMENTS OF THE SUBDIVISION MAP ACT AT THE REQUEST OF JACK REED IN DECEMBER, 1967. I HEREBY CERTIFY THAT IT CONFORMS TO THE APPROVED TENTATIVE MAP AND THE CONDITIONS OF APPROVAL THEREOF, AND THAT ALL PROVISIONS OF APPLICABLE STATE LAW AND LOCAL ORDINANCES HAVE BEEN COMPLIED WITH.

Edward P. Norris
EDWARD P. NORRIS, L.S. 2846

RECORDER'S CERTIFICATE

FILED THIS 13th DAY OF January, 1968, AT 8:45 A.M. IN BOOK 2 OF PARCEL MAPS AT PAGE 110 AT THE REQUEST OF WALTER B. GRIMES. RECORDING NO. 2847

FEE 5.00

Lee Hogan Yasunaga
COUNTY RECORDER

BY [Signature]
DEPUTY

COUNTY ENGINEER'S CERTIFICATE

THIS MAP HAS BEEN EXAMINED FOR CONFORMANCE WITH THE REQUIREMENTS OF SECTION 11575 OF THE SUBDIVISION MAP ACT THIS 11th DAY OF January, 1968.

Lawrence J. Brock
LAWRENCE J. BROCK, R.C.E. 13528

PARCEL MAP

THE NORTH 1/2 OF THE S.E. 1/4 OF THE N.W. 1/4 OF SECTION 22, T.27N., R.13E., M.D.B.&M. PLUMAS COUNTY, CALIFORNIA

MAP OF THE LANDS OF JACK REED

SCALE: 1" = 200' DECEMBER, 1967

WALTER B. GRIMES ASSOC.
CIVIL ENGINEERS & LAND SURVEYORS
1356 MANGROVE AVENUE, CHICO, CALIFORNIA