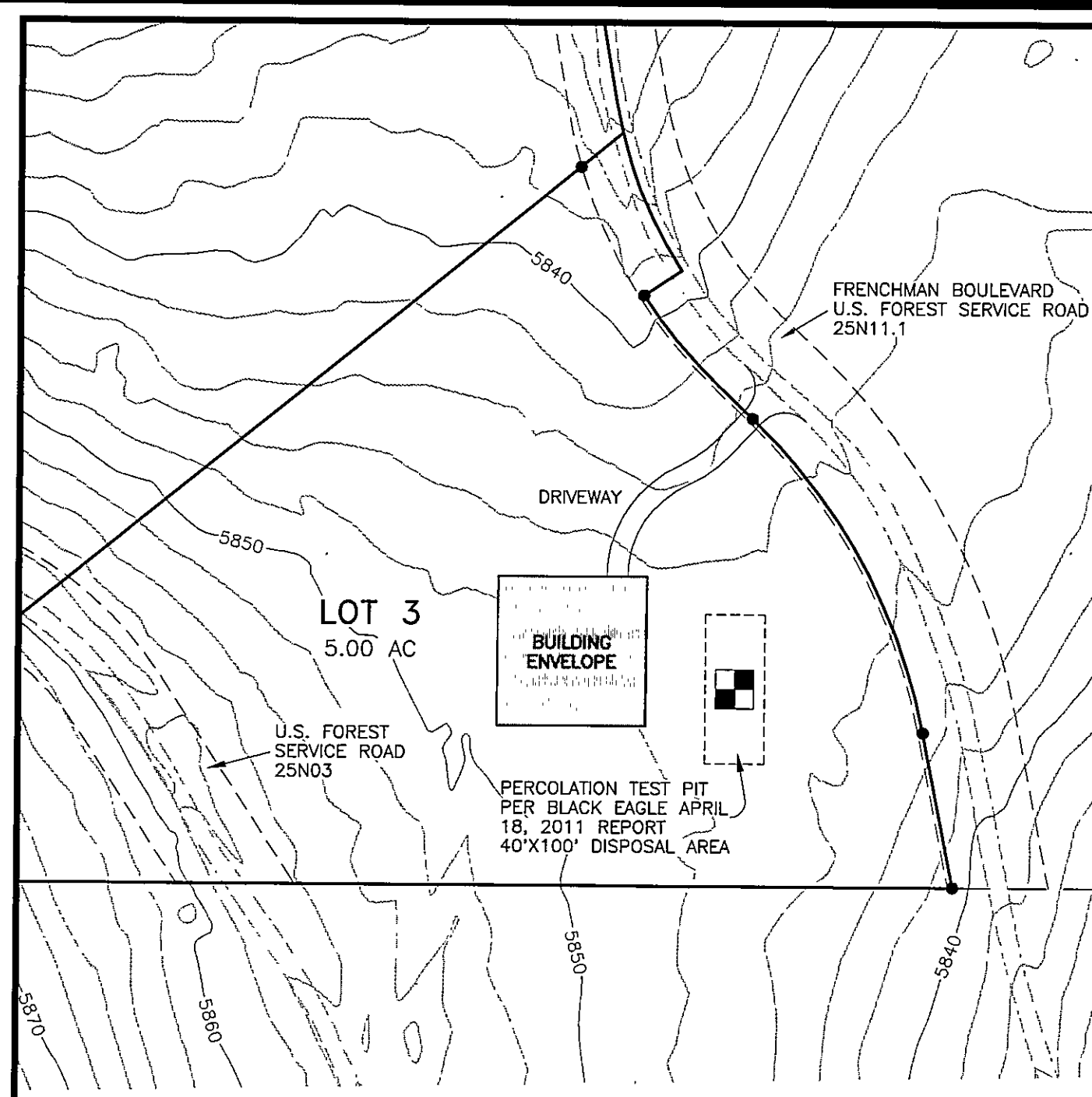
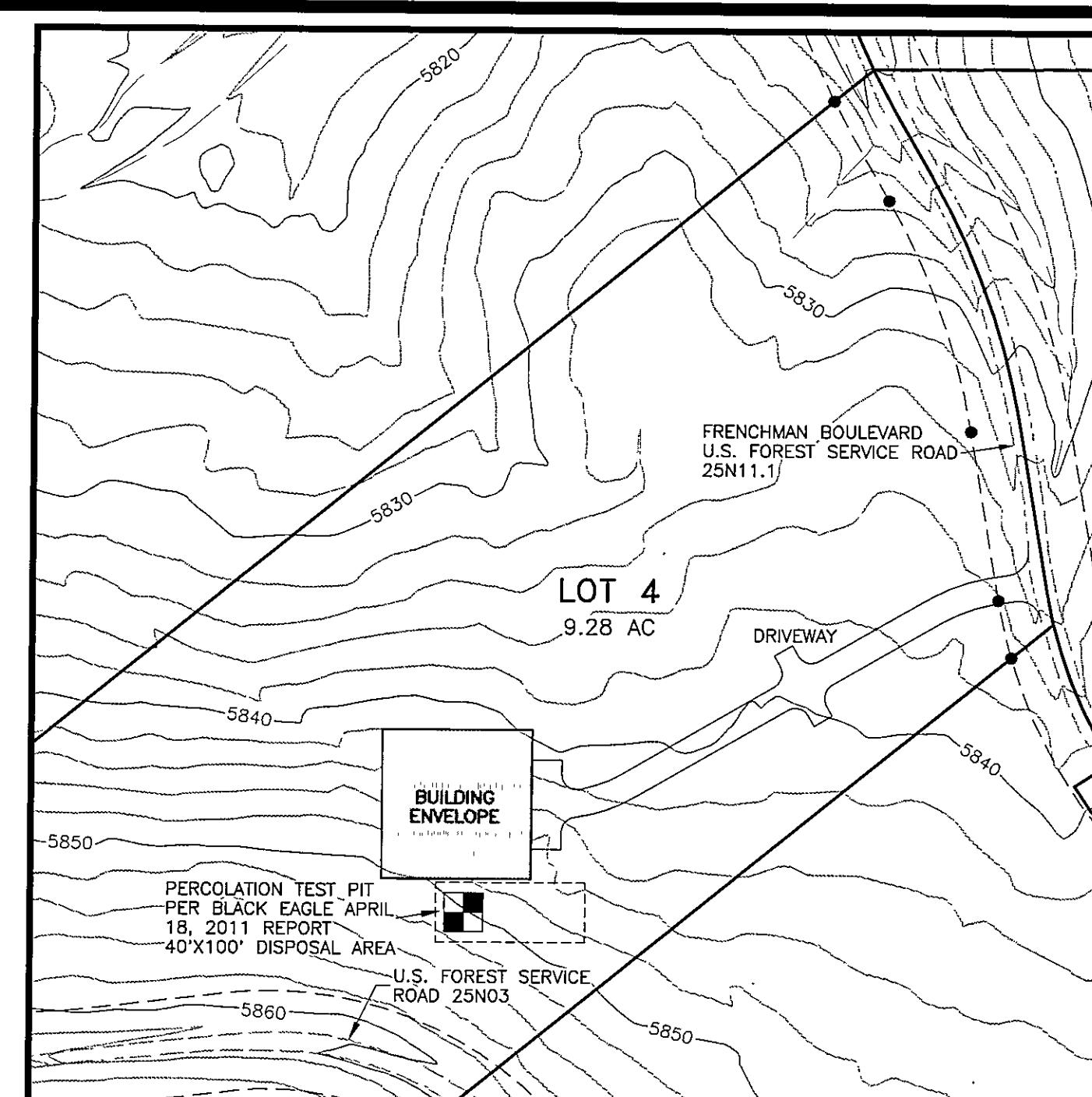


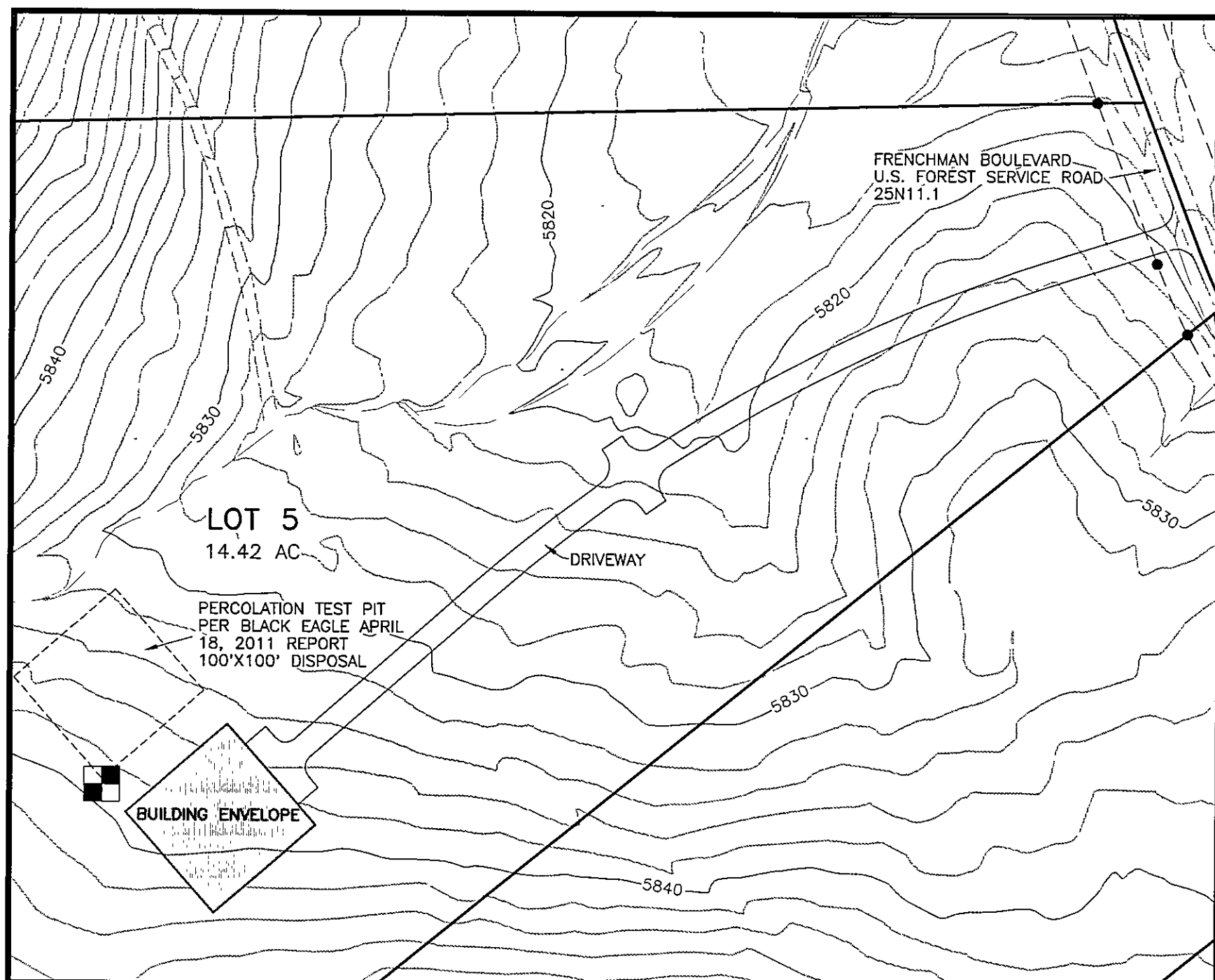
LOT 2



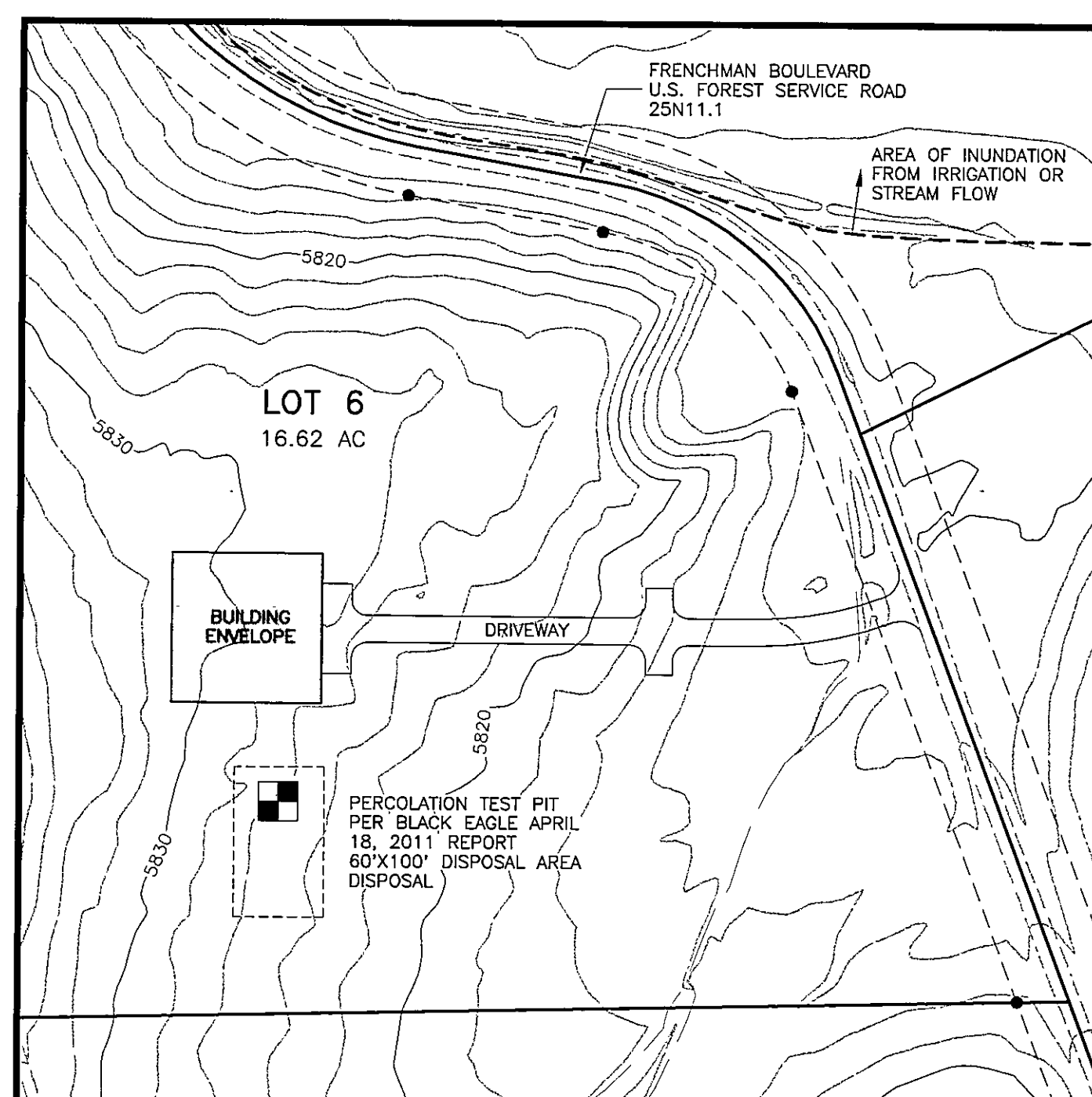
LOT 3



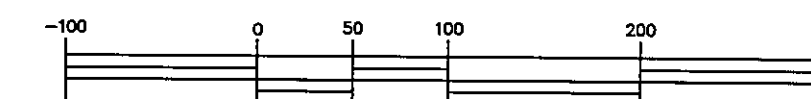
LOT 4



LOT 5



LOT 6



SCALE: 1 inch = 100 ft.

ADDITIONAL INFORMATION STATEMENT

THIS ADDITIONAL INFORMATION SHEET IS A PART OF THE OFFICIAL PLAT OF RAMELLI CREEK RANCH SUBDIVISION AS SHOWN ON SHEETS 1 THROUGH 3. THE ADDITIONAL INFORMATION SHOWN ON THIS SHEET IS FOR INFORMATIONAL PURPOSES ONLY, DESCRIBING CONDITIONS AS OF THE DATE OF FILING, AND IS NOT INTENDED TO AFFECT RECORD TITLE INTEREST. THIS INFORMATION IS DERIVED FROM PUBLIC RECORDS OR REPORTS, AND DOES NOT IMPLY THE CORRECTNESS OR SUFFICIENCY OF THOSE RECORDS OR REPORTS BY THE PREPARER OF THE DOCUMENT OR ADDITIONAL MAP SHEET.

**ADDITIONAL INFORMATION SHEET FOR
OFFICIAL PLAT OF
RAMELLI CREEK RANCH SUBDIVISION**
A PORTION OF SECTIONS 29 AND 32,
T.25N., R.16E., M.D.M.
BEING PARCEL 2 OF THAT LOT LINE ADJUSTMENT
RECORDED AS 2011-1861

PLUMAS COUNTY

CALIFORNIA

C & M ENGINEERING AND DESIGN, LTD
9498 DOUBLE R BLVD., SUITE B
RENO, NV 89521
PHONE: (775) 856-3312
FAX: (775) 856-3318

JOB NO. 07-002.01
DATE 11/22/11

SHEET 5 OF 5