

**Basis of Bearings**

The Basis of Bearings of this map is the East line of the SE 1/4 of section 30 shown as N0°22'00"E in Book 7 of Record of Surveys at page 81

220 O.R. 370

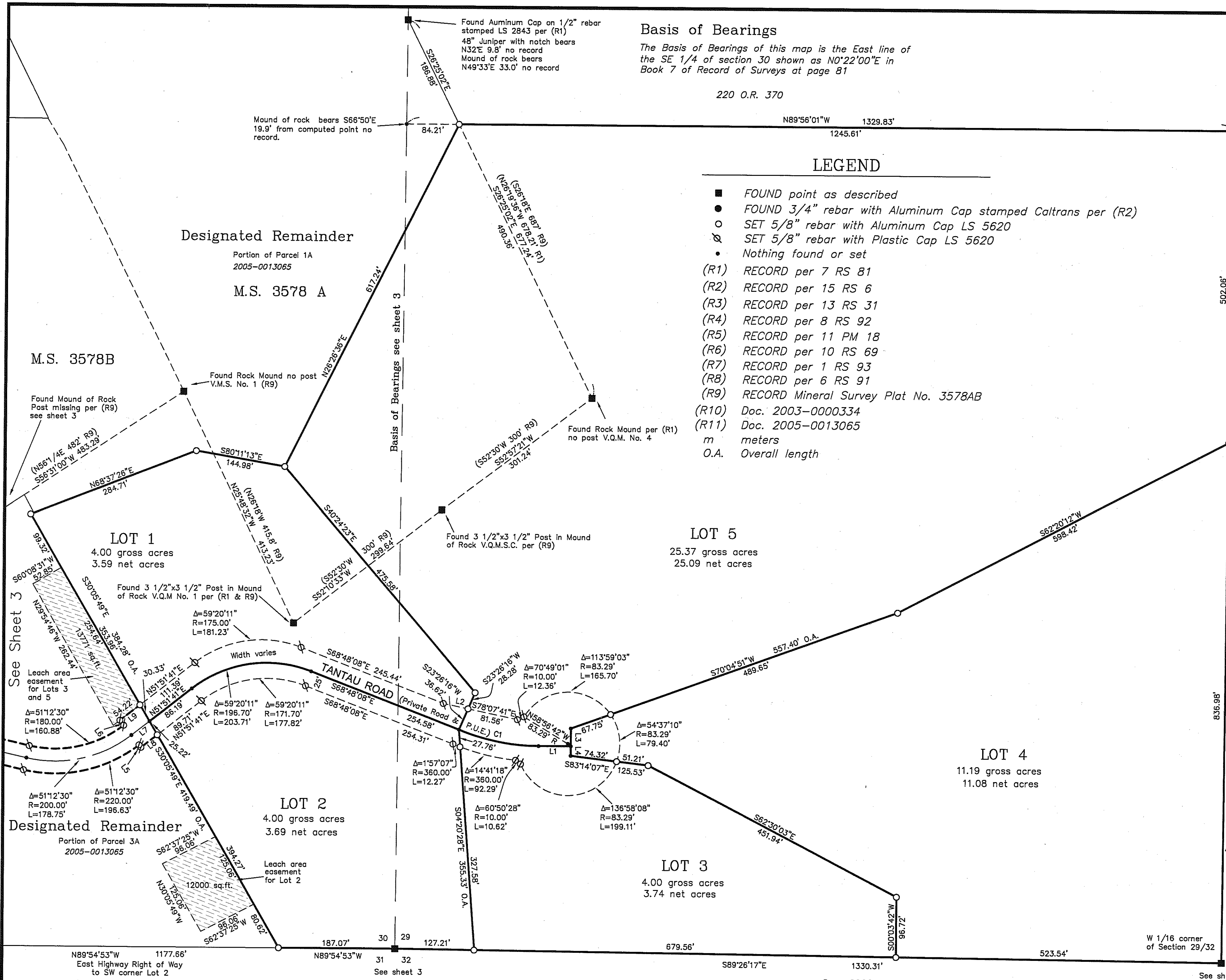
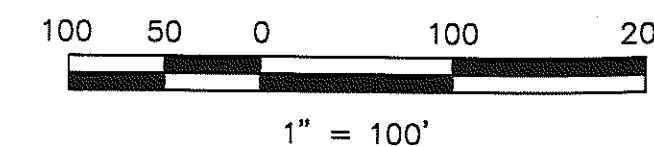
**LEGEND**

- FOUND point as described
  - FOUND 3/4" rebar with Aluminum Cap stamped Caltrans per (R2)
  - SET 5/8" rebar with Aluminum Cap LS 5620
  - ⊗ SET 5/8" rebar with Plastic Cap LS 5620
  - Nothing found or set
- (R1) RECORD per 7 RS 81  
 (R2) RECORD per 15 RS 6  
 (R3) RECORD per 13 RS 31  
 (R4) RECORD per 8 RS 92  
 (R5) RECORD per 11 PM 18  
 (R6) RECORD per 10 RS 69  
 (R7) RECORD per 1 RS 93  
 (R8) RECORD per 6 RS 91  
 (R9) RECORD Mineral Survey Plat No. 3578AB  
 (R10) Doc. 2003-0000334  
 (R11) Doc. 2005-0013065  
 m meters  
 O.A. Overall length

SW 1/16 corner of Section 29 See Sheet 3

CURVE TABLE			
CURVE	LENGTH	RADIUS	DELTA
C1	131.95	335.00	22°34'03"

LINE TABLE		
LINE	BEARING	LENGTH
L1	N89°54'22"E	52.36'
L2	S78°07'41"E	40.58'
L3	S00°05'44"E	28.47'
L4	S00°05'44"E	15.44'
L5	S38°08'19"E	5.00'
L6	S38°08'19"E	10.00'
L7	N51°51'41"E	36.33'
L8	N51°51'41"E	32.81'
L9	N51°51'41"E	40.58'



**Tantau Ranch Subdivision and Planned Development for Tantau Ranch, LLC**

A California Limited Liability Company  
 A division of Resulting Parcels 1A, 2A, & 3A per Document 2005-0013065  
 Portion of Sections 29 & 30  
 T. 22 N., R. 13 E., M.D.M.  
 Plumas County, California  
 November, 2010 Scale 1" = 100'

Hamby Surveying Inc.  
 P.O. Box 1209  
 Portola, CA 96122  
 (530) 832-5571

**10 M 120**